

No.	Street and Station	From CL	Description	Elevation
3	Cranbrook, Sta. 21+71.05	18.5' LT	S.W. End of Curb Return, in line with R/L Intersection of Cranbrook and Cranbrook Ct.	

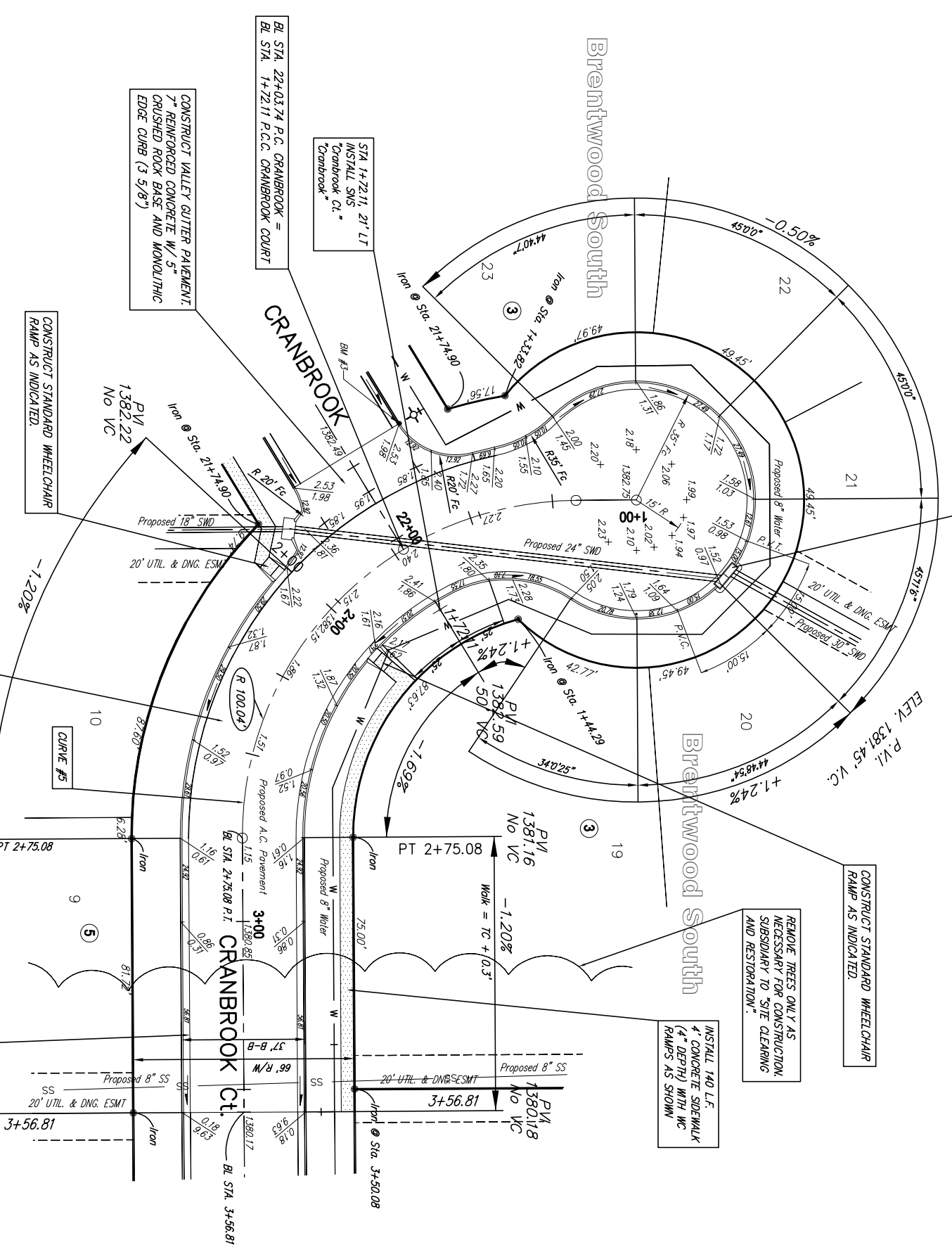
SUBDIVISION BENCH MARKS

Station	Arc	FACE CHORD LENGTHS		T. Del't	I. Del't
		8 LT	8 RT		
1+18.00	-	-	-	0.00.00"	0.00.00"
1+25.00	7.00'	5.18'	8.82'	2.00.16"	2.00.16"
1+50.00	25.00'	18.45'	31.42'	7.09.53"	9.09.49"
1+75.00	25.00'	18.45'	31.42'	16.19.22"	16.19.22"
2+00.00	25.00'	18.45'	31.42'	23.78.55"	23.78.55"
2+25.00	25.00'	18.45'	31.42'	30.58.28"	30.58.28"
2+50.00	25.00'	18.45'	31.42'	37.48.01"	37.48.01"
2+75.08	25.08'	18.51'	31.52'	44.58.57"	44.58.57"

Curve Data Based on Centerline
 Rad. = 100.04' Delta = 89° 58' 15" Tangent = 99.99'
 Arc = 157.09' L.C. = 141.44' Del'/Ft. = 17.18203 Min.

CURVE # 5

NOTE: ROLL TYPE CURB AND GUTTER TO BE CONSTRUCTED ALONG PAVEMENT DEPICTED ON THIS SHEET



CONSTRUCT 5" ASPHALT CONCRETE PAVEMENT W/ 6" CRUSHED ROCK BASE

CONSTRUCT STANDARD WHEELCHAIR RAMP AS INDICATED.

CONSTRUCT VALLEY GUTTER PAVEMENT: 7" REINFORCED CONCRETE W/ 5" CRUSHED ROCK BASE AND MONOLITHIC EDGE CURB (3' 5/8")

CONSTRUCT COMBINED ROLL TYPE CURB AND GUTTER (3' 5/8") BOTH SIDES

BRENTWOOD SOUTH ADDITION
Cranbrook Ct.
WICHITA, KANSAS

Rugles & Bohm, P.A.
 Engineering, Surveying, Land Farming
 924 North Main
 Wichita, Kansas 67203
 www.rtkansas.com
 E-mail: info@rtkansas.com

DESIGN: **KML**
 DRAWN: **JDM**
 REVIEW: **JDM**
 UTILITY:
 DATE: **April 4, 2007**

PROJECT NUMBER: **472-84476**

RB JOB: **2957X**
 SHEET: **6**
 OF: **33**