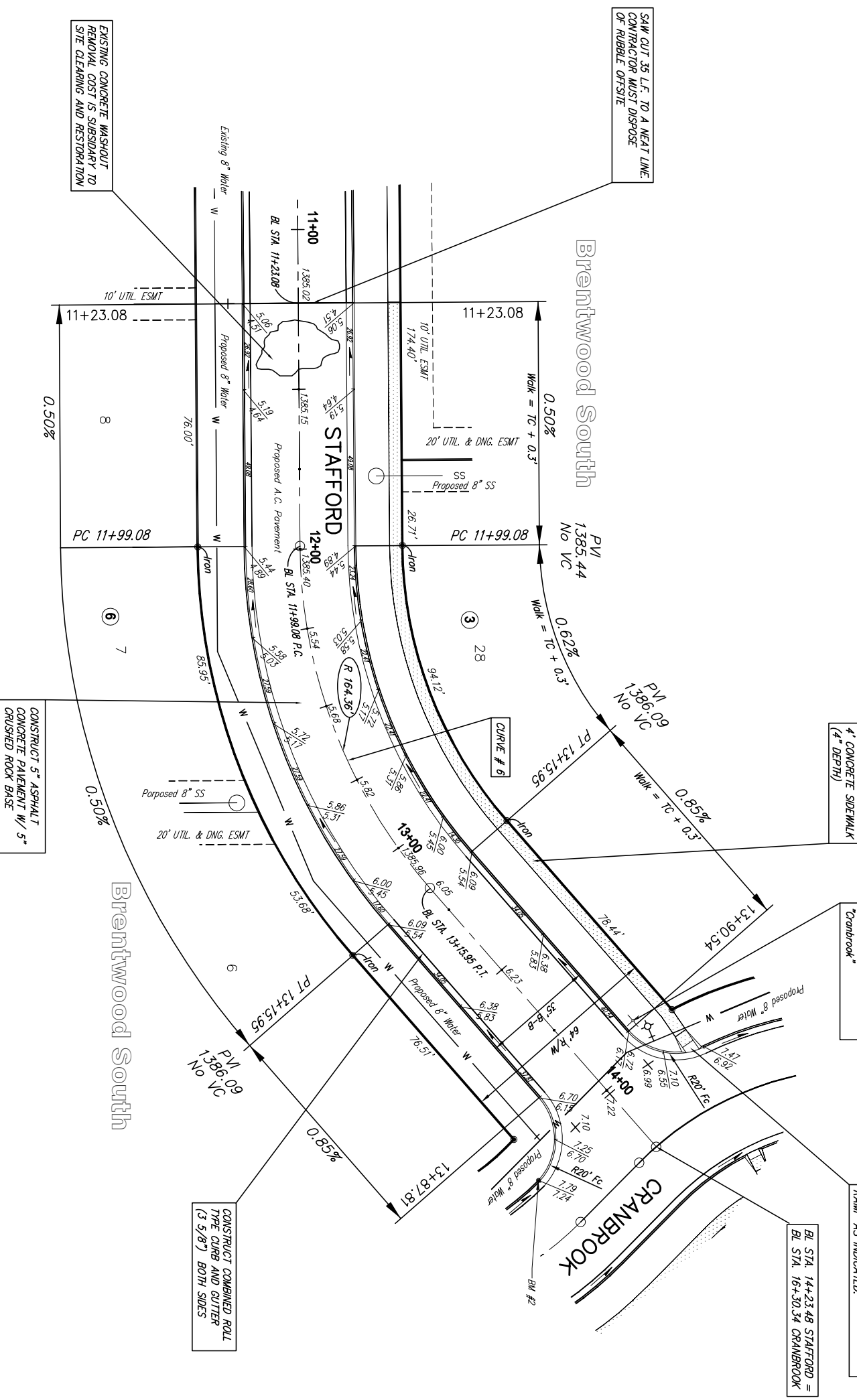


SUBDIVISION BENCH MARKS

No.	Street and Station	From CL	Description	Elevation
2	Cranbrook, Sta. 15+97.00	18.5' Lt.	S.W. End of Curb Return, Intersection of Cranbrook and Stafford	

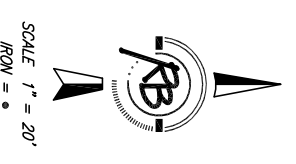


CURVE # 6


Curve Data Based on Centerline
 Rad = 164.36' Delta = 40° 44' 27" Tangent = 61.03'
 Arc = 116.87' L.C. = 114.42' Del/Fl. = 10.43799 Min.

Station	FACE CHORD LENGTHS		Defl	I. Defl
	8 Lt.	8 Rt.		
11+99.08	0.92'	1.07'	0.0000°	0.0000°
12+00.00	23.00'	28.93'	0.9937°	0.9937°
12+25.00	25.00'	28.93'	4.2127°	4.3104°
12+50.00	25.00'	28.93'	21.03°	8.5231°
12+75.00	25.00'	28.93'	42.127°	13.7358°
13+15.95	40.95'	34.38'	47.31°	20.2213°

NOTE: ROLL TYPE CURB AND GUTTER TO BE CONSTRUCTED ALONG PAVEMENT DEPICTED ON THIS SHEET



BRENTWOOD SOUTH ADDITION
Stafford
WICHITA, KANSAS



Rugles & Bohm, P.A.
 Engineering, Surveying, Land Farming
 924 North Main
 Wichita, Kansas 67203
 www.rtkansas.com

DESIGN: **KML**
 DRAWN: **JJM**
 REVIEW: **JJM**
 UTILITY
 DATE: **April 2, 2007**

PROJECT NUMBER: **472-84476**
 DRAWING TITLE: **Paving Brentwood South**

RB JOB: **2957X**
 SHEET: **7**
 OF: **33**