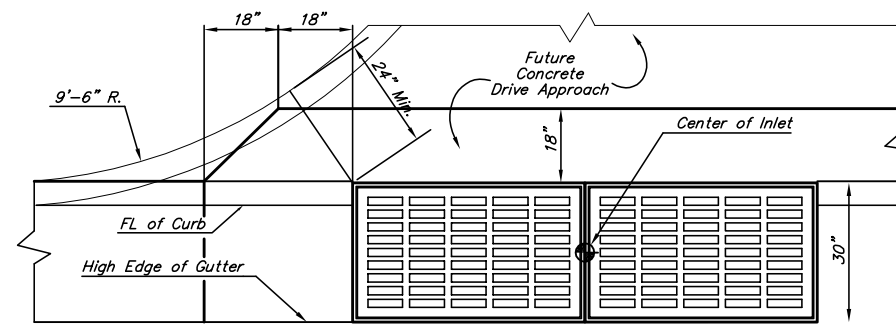


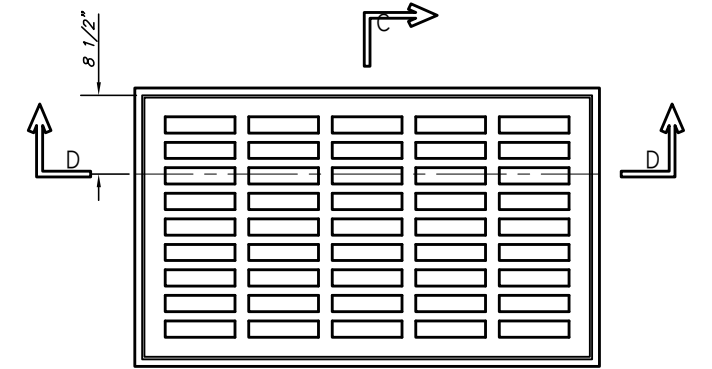
**SECTION B-B**



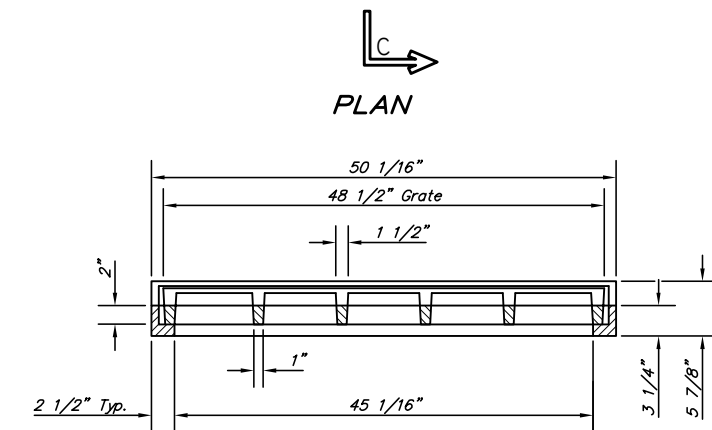
**PLAN**

**GENERAL NOTES**

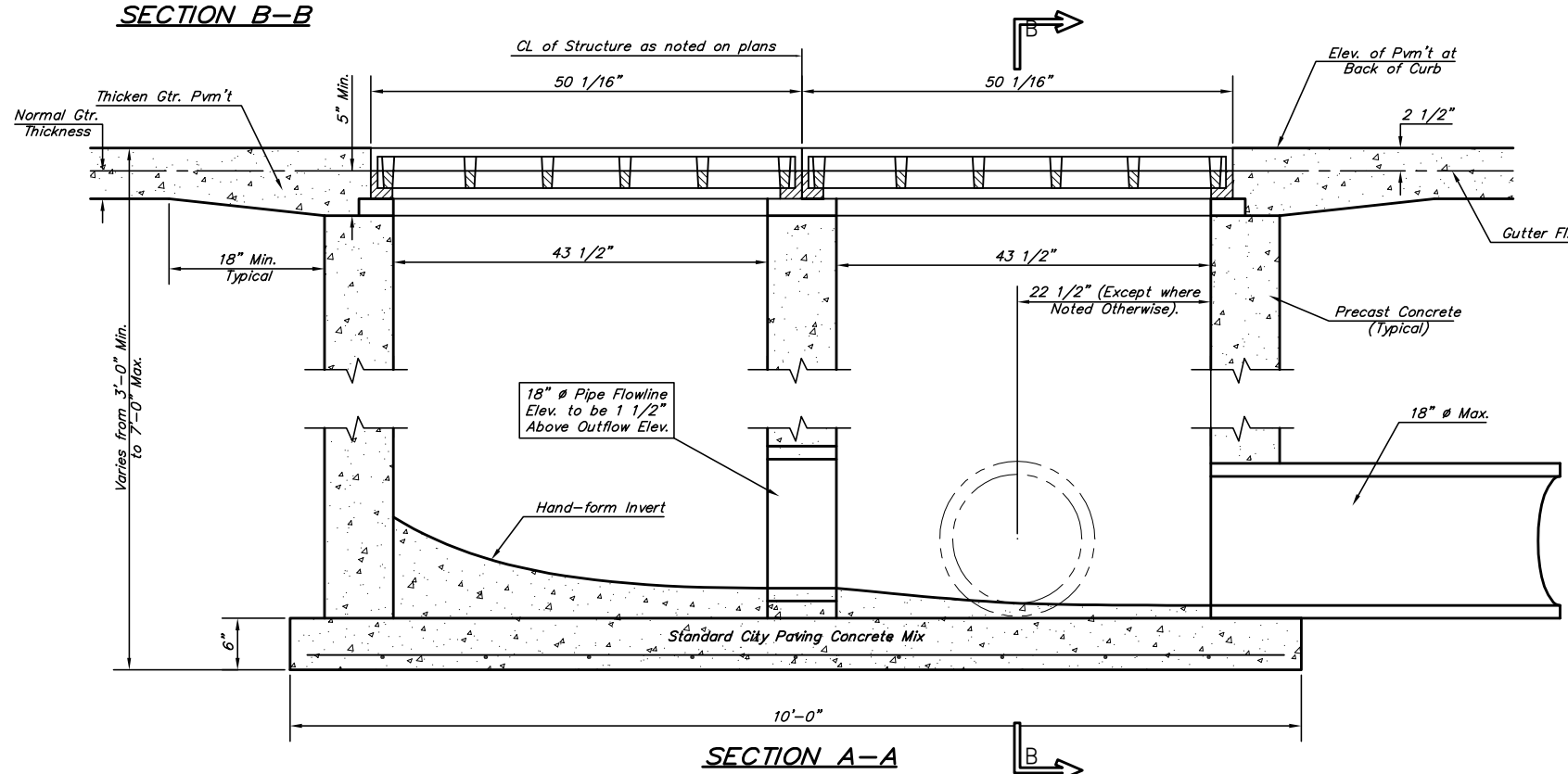
1. Grate frames to be installed on thin mortar cushion to insure full support along brick walls. Concrete used for inlet construction shall be concrete pavement mix.
2. Inlet invert shall be shaped with 8 sack sand mix concrete to create flow channels and to increase hydraulic efficiency such that the inlet will be self cleaning between all inlet and/or outlet pipes.
3. The ends of all pipes installed in inlets shall be cut off flush with the inside face of the inlet wall.
4. Inlet Frames and Grates to be two (2) Deeter #2095 or approved equal.



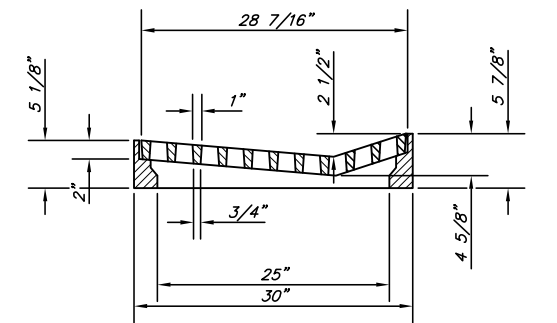
**PLAN**



**SECTION D-D**



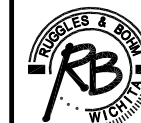
**SECTION A-A**



**SECTION C-C**

**DEETER #2095 FRAME & GRATE**  
 TOTAL WEIGHT: 705 lbs.  
 (2 Each Required)

**DRIVEWAY GRATED INLET DOUBLE**



**Ruggles & Bohm, P.A.**  
 Engineering, Surveying, Land Planning  
 924 North Main (316) 264-8008  
 Wichita, Kansas 67203 (316) 264-4621 fax  
 www.rbkansas.com E-mail: info@rbkansas.com

DRAWING FILE: (RB)Driveway Approach Inlet (Single)  
 PROJECT NUMBER: 472-84476  
 DATE: Mar. 5, 2002

DESIGN: COW  
 DRAWN: COW  
 REVIEW: COW  
 UTILITY: COW  
 SHEET: 12 OF 33