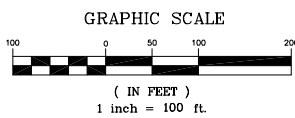
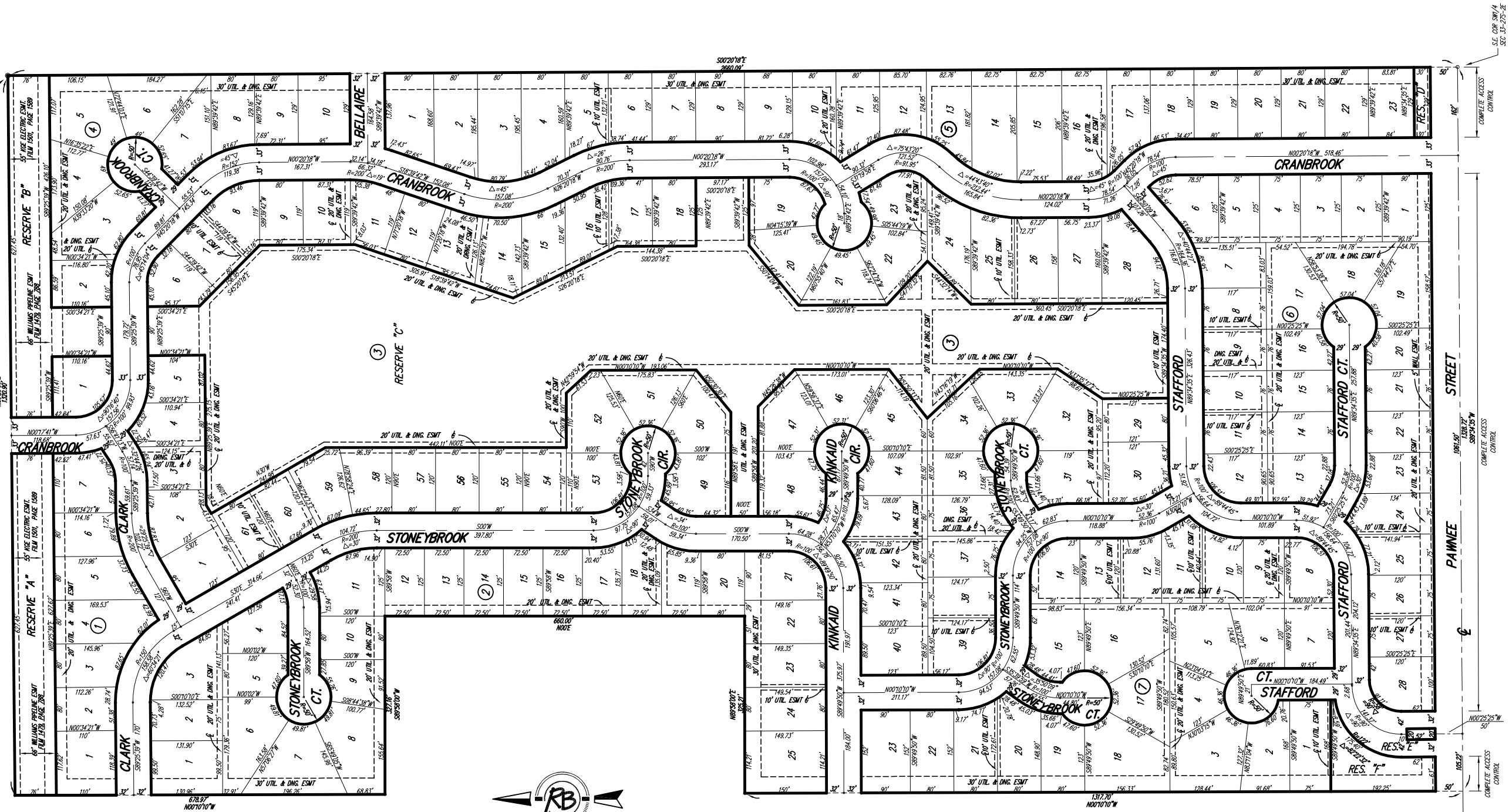


BRENTWOOD SOUTH ADDITION

WICHITA, SEDGWICK COUNTY, KANSAS



BLOCK	LOT NO.	ELEVATION (M.G.V.D.)
3	Lots 1-20, 47 Lots 50-61	1369

Please contact Western Resources (or its successor) Electric Transmission Engineering Department (currently 785-575-8219) before conducting any proposed construction activities that could place people, equipment, or facilities within Western Resources' easement, shown on this plat, designated as Film 1501, Page 1589, dated December 29, 1994.

- △ = CITY OF WICHITA CONTROL THIMBLE (FOUND)
- = 1/2" REBAR W/CARRIER CAP (FOUND)
- = 5/8" REBAR (FOUND)
- = 1/2" REBAR W/SRB CAP (SET)

BENCH MARK #1: USGS BRASS PLUG 28" S. & 530" W. OF CENTERLINE INTERSECTION OF CAPRI & PAWNEE. ELEV.=1386.25 NGVD

BENCH MARK #2: CITY OF WICHITA STD. DISC. 20.0" W. & 54.5" S. OF CENTERLINE INTERSECTION DALTON & PAWNEE. ELEV.=1378.60

Brentwood South Addition
FINAL PLAT
WICHITA, KANSAS

Ruggles & Bohm, P.A.
Engineering, Surveying, Land Planning

924 North Main
Wichita, Kansas 67203
www.rbkansas.com

(316) 284-8008
(316) 284-4621 fax
E-mail: info@rbkansas.com

DESIGN: KWL
DRAWN: JDM
REVIEW: []
UTILITY: []

DATE: April 2, 2007

DRAWING FILE: Paving [Final Plat]

PROJECT NUMBER: 472-84476

SHEET: 33 OF 33