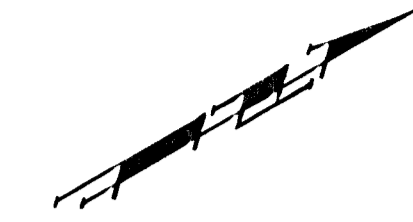


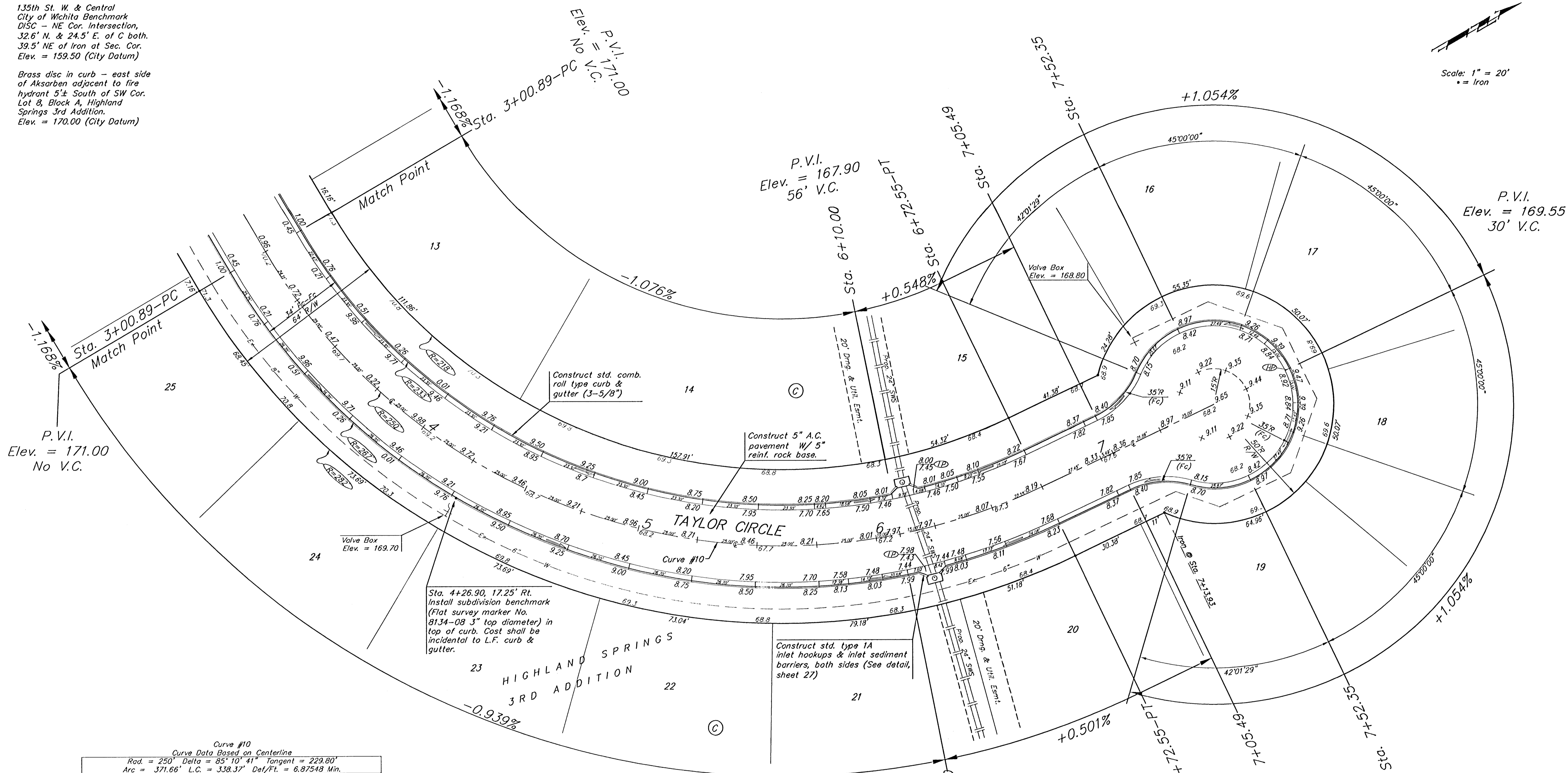
Benchmarks:

135th St. W. & Central
City of Wichita Benchmark
DISC - NE Cor. Intersection,
32.6' N. & 24.5' E. of C. both
39.5' NE of Iron at Sec. Cor.
Elev. = 159.50 (City Datum)

Brass disc in curb - east side
of Aksarben adjacent to fire
hydrant 5± South of SW Cor.
Lot 8, Block A, Highland
Springs 3rd Addition.
Elev. = 170.00 (City Datum)



Scale: 1" = 20'
• = Iron



Curve #10
Curve Data Based on Centerline
Rad. = 250' Delta = 85° 10' 41" Tangent = 229.80'
Arc = 371.66' L.C. = 338.37' Del/Ft. = 6.87548 Min.

Station	Arc	FACE CHORD LENGTHS		Defl.	T. Defl.
		B' Lt.	B' Rt.		
3+00.89		0'00.00"	0'00.00"		
3+25.00	24.11'	21.69'	26.51'	2'45.46"	2'45.46"
3+50.00	25.00'	22.49'	27.49'	2'51.53"	5'37.39"
3+75.00	25.00'	22.49'	27.49'	2'51.54"	8'29.33"
4+00.00	25.00'	22.49'	27.49'	2'51.53"	11'21.26"
4+25.00	25.00'	22.49'	27.49'	2'51.53"	14'13.19"
4+50.00	25.00'	22.49'	27.49'	2'51.53"	17'05.12"
4+75.00	25.00'	22.49'	27.49'	2'51.53"	19'57.05"
5+00.00	25.00'	22.49'	27.49'	2'51.54"	22'48.99"
5+25.00	25.00'	22.49'	27.49'	2'51.53"	25'40.92"
5+50.00	25.00'	22.49'	27.49'	2'51.53"	28'32.85"
5+75.00	25.00'	22.49'	27.49'	2'51.53"	31'24.78"
6+00.00	25.00'	22.49'	27.49'	2'51.54"	34'16.72"
6+25.00	25.00'	22.49'	27.49'	2'51.53"	37'08.65"
6+50.00	25.00'	22.49'	27.49'	2'51.53"	40'00.58"
6+72.55	22.55'	20.29'	24.80'	2'35.03"	42'35.21"

NOTE: ROLL TYPE CURB & GUTTER TO BE CONSTRUCTED ON THE PAVEMENT SHOWN ON THIS SHEET. TOP OF CURB ELEVATIONS ARE GIVEN FOR FULL HEIGHT CURB.

Baughman Highland Springs 3rd Addition - Phase II
TAYLOR CIRCLE
STA 3+00.89 TO STA 7+52.35

Baughman Company, P.A. 315 E. 15th St. Wichita, KS 67202 P: 316-262-7221 F: 316-262-1419
ENGINEERING | SURVEYING | PLANNING | LANDSCAPE ARCHITECTURE

PROJECT NUMBER: 472-83779 DESIGN: NBW DRAWN: TMS/JAK
APPROVED: DATE: 4/20/05
SCALE: Noted SHEET: 15 OF 39

Highland Springs 3rd Phase 2/Sheet 8.dwg 04-06-0927