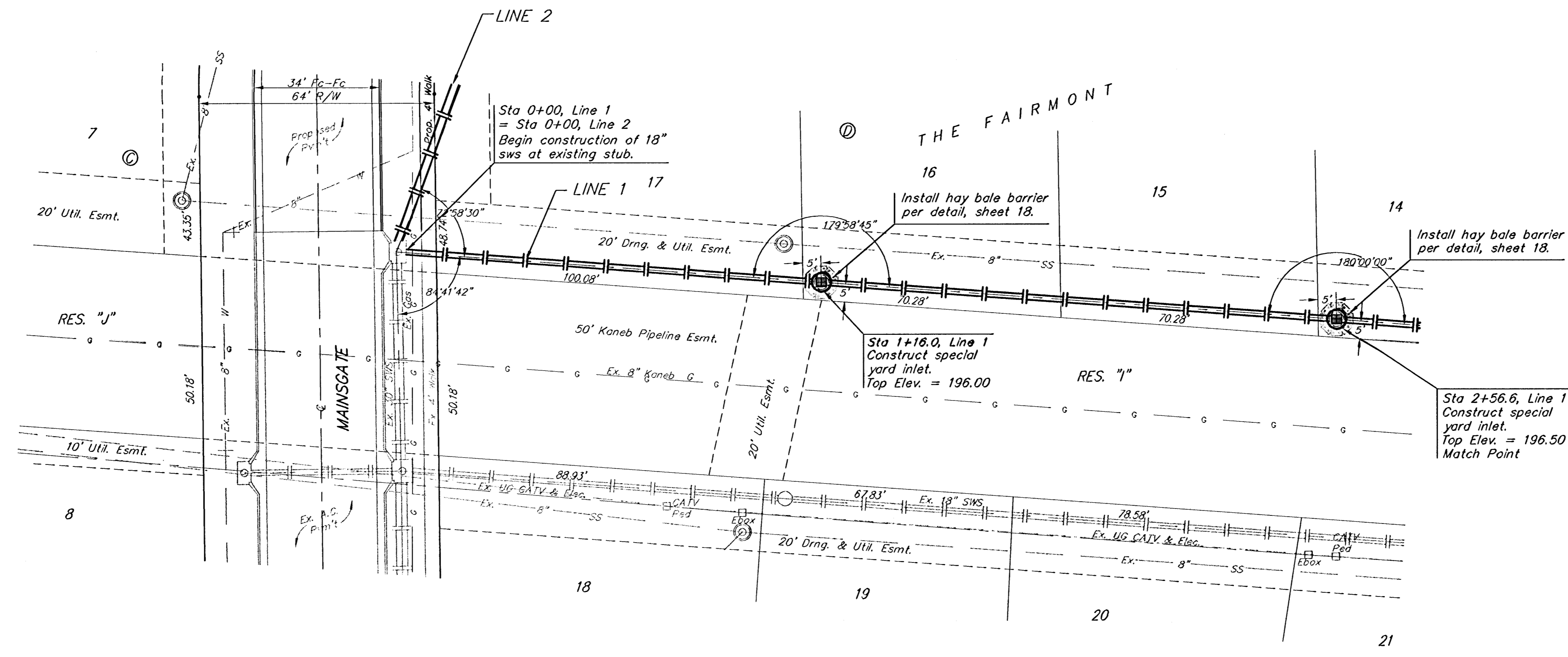
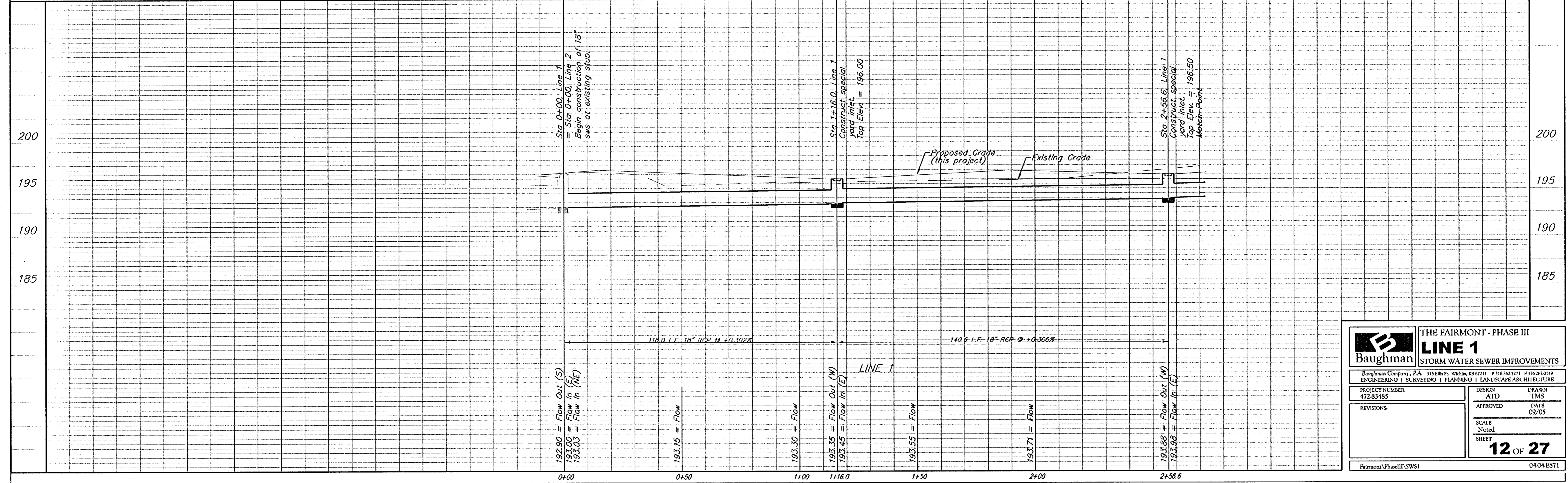


**BENCHMARKS:**  
 BM #1: "□" Cut on I.C., 12' west of east end of N curb return on the north drive entrance of the Church of the Magdalen.  
 Elev. = 190.48 (City Datum)  
 BM #2: RR spike on the west face of PP on the east side of 127th Street East, adjacent to the south line of The Fairmont Addition.  
 Elev. = 187.25 (City Datum)  
 BM #3: RR spike on the east face of PP on the west side of 127th Street East, 37' N and 13' E of the NE corner of Lot 1, Block H, The Fairmont Addition.  
 Elev. = 189.19 (City Datum)



Scale: 1" = 20' Horizontal  
 1" = 5' Vertical  
 • = Iron



|                                |                |  |                           |
|--------------------------------|----------------|--|---------------------------|
|                                |                | THE FAIRMONT - PHASE III   |                           |
|                                |                | <b>LINE 1</b>  |                           |
| STORM WATER SEWER IMPROVEMENTS |                | Baughman Company, P.A. 315 E. St. White, KS 67211 P 316.262.7771 F 316.262.6149<br>ENGINEERING   SURVEYING   PLANNING   LANDSCAPE ARCHITECTURE |                           |
| PROJECT NUMBER<br>472-83485    | DESIGN<br>ATD  | DRAWN<br>TMS   | APPROVED<br>DATE<br>09/05 |
| REVISIONS:                     | SCALE<br>Noted | SHEET  |                           |
|                                |                | <b>12 OF 27</b>  |                           |
| Fairmont Phase III SWS1        |                | 0404-E871  |                           |