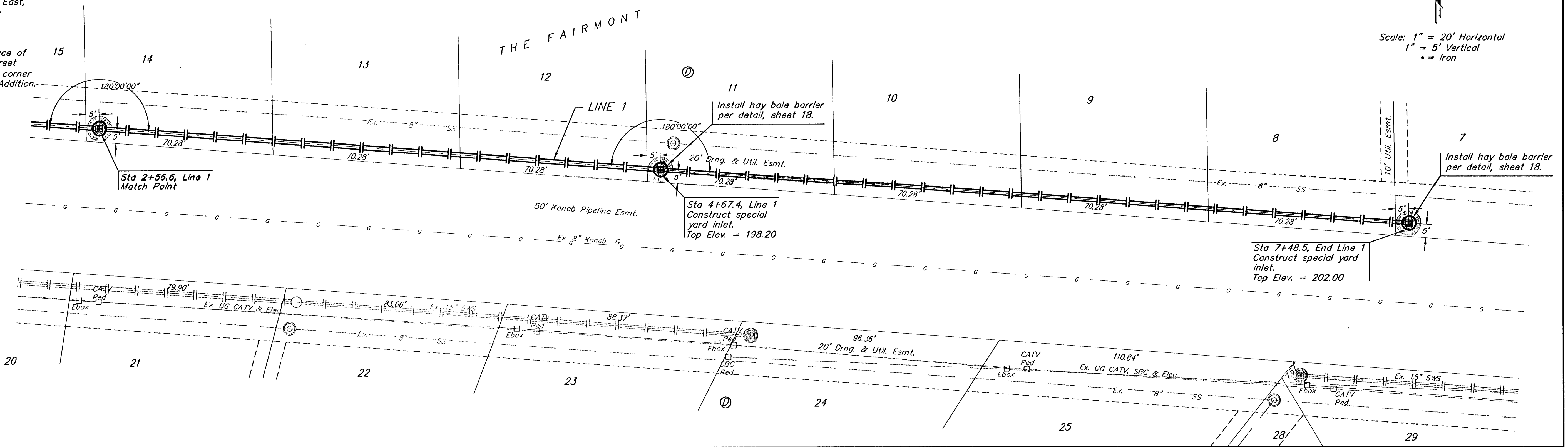
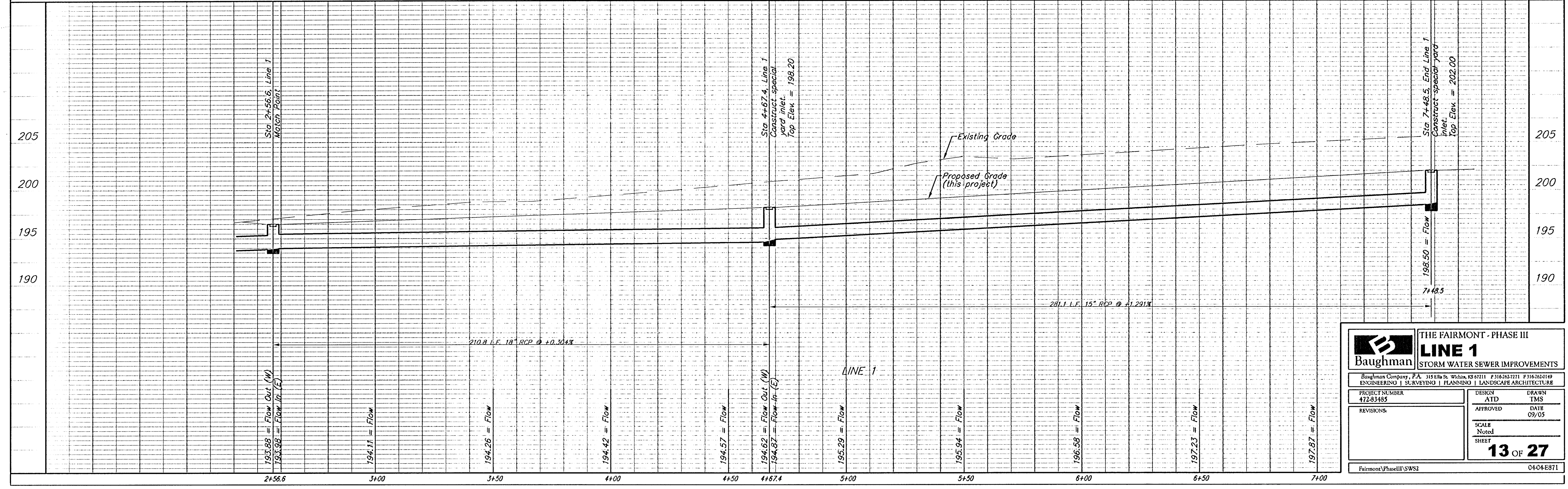


BENCHMARKS:
 BM #1: "□" Cut on T.C., 12' west of east end of N curb return on the north drive entrance of the Church of the Magdalen.
 Elev. = 190.48 (City Datum)
 BM #2: RR spike on the west face of PP on the east side of 127th Street East, adjacent to the south line of The Fairmont Addition.
 Elev. = 187.25 (City Datum)
 BM #3: RR spike on the east face of PP on the west side of 127th Street East, 37' N and 13' E of the NE corner of Lot 1, Block H, The Fairmont Addition.
 Elev. = 189.19 (City Datum)



Scale: 1" = 20' Horizontal
 1" = 5' Vertical
 • = Iron



	THE FAIRMONT - PHASE III LINE 1 STORM WATER SEWER IMPROVEMENTS	
	<small>Baughman Company, P.A. 315 E. St. W. Suite 8307111 F316262019 ENGINEERING SURVEYING PLANNING LANDSCAPE ARCHITECTURE</small>	
<small>PROJECT NUMBER 47283483</small>	<small>DESIGN ATD</small>	<small>DRAWN TMS</small>
<small>REVISIONS</small>	<small>APPROVED</small>	<small>DATE 09/05</small>
<small>SCALE Noted</small>		<small>SHEET 13 OF 27</small>
<small>Fairmont Phase III SWS2</small>		<small>04-04-E871</small>