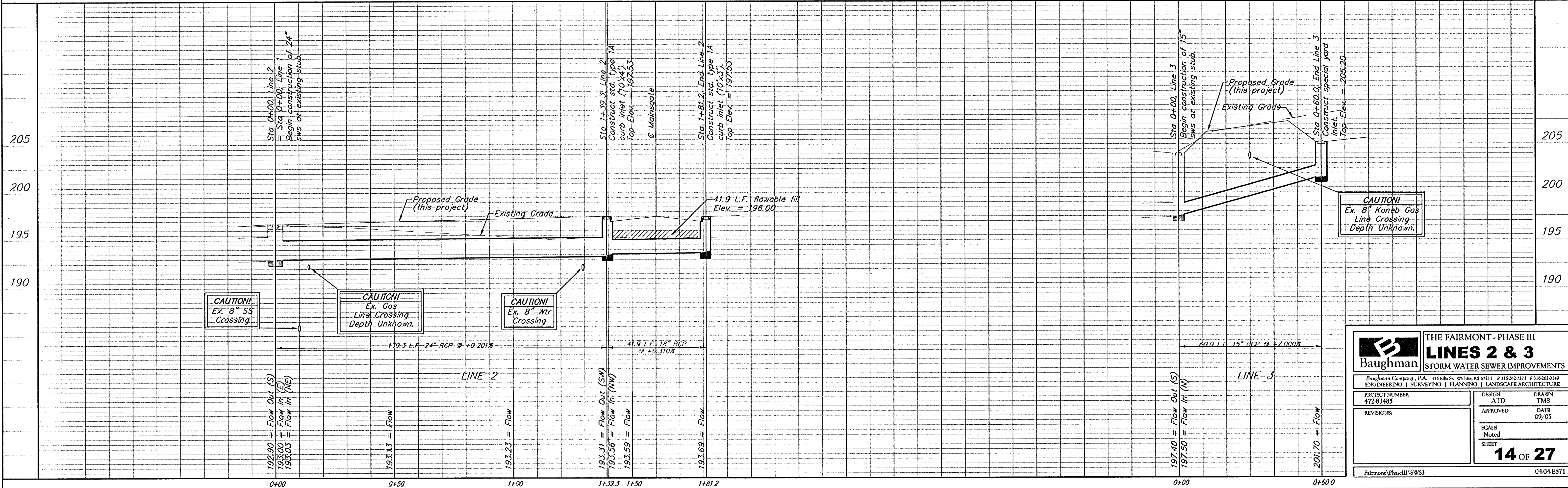
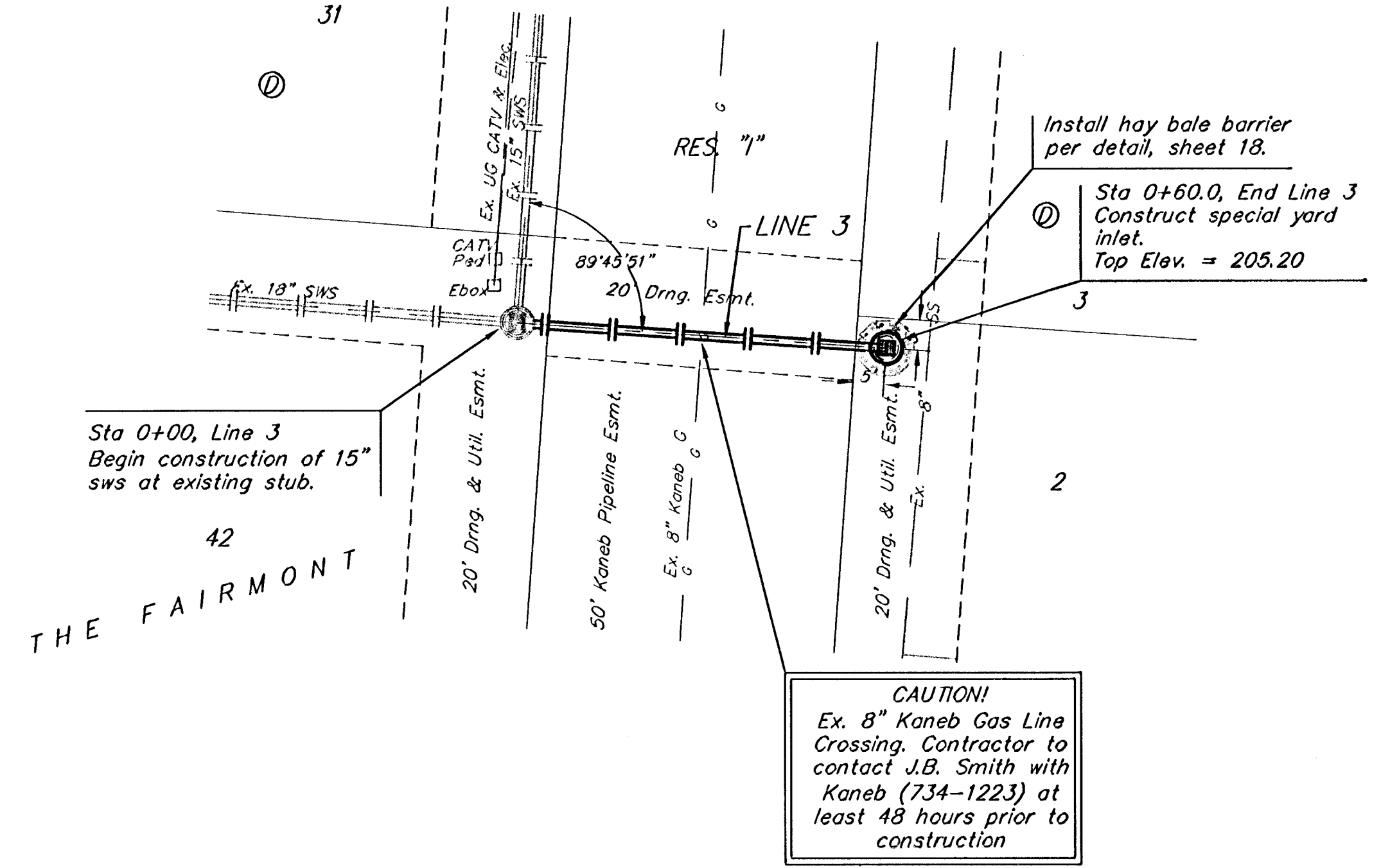
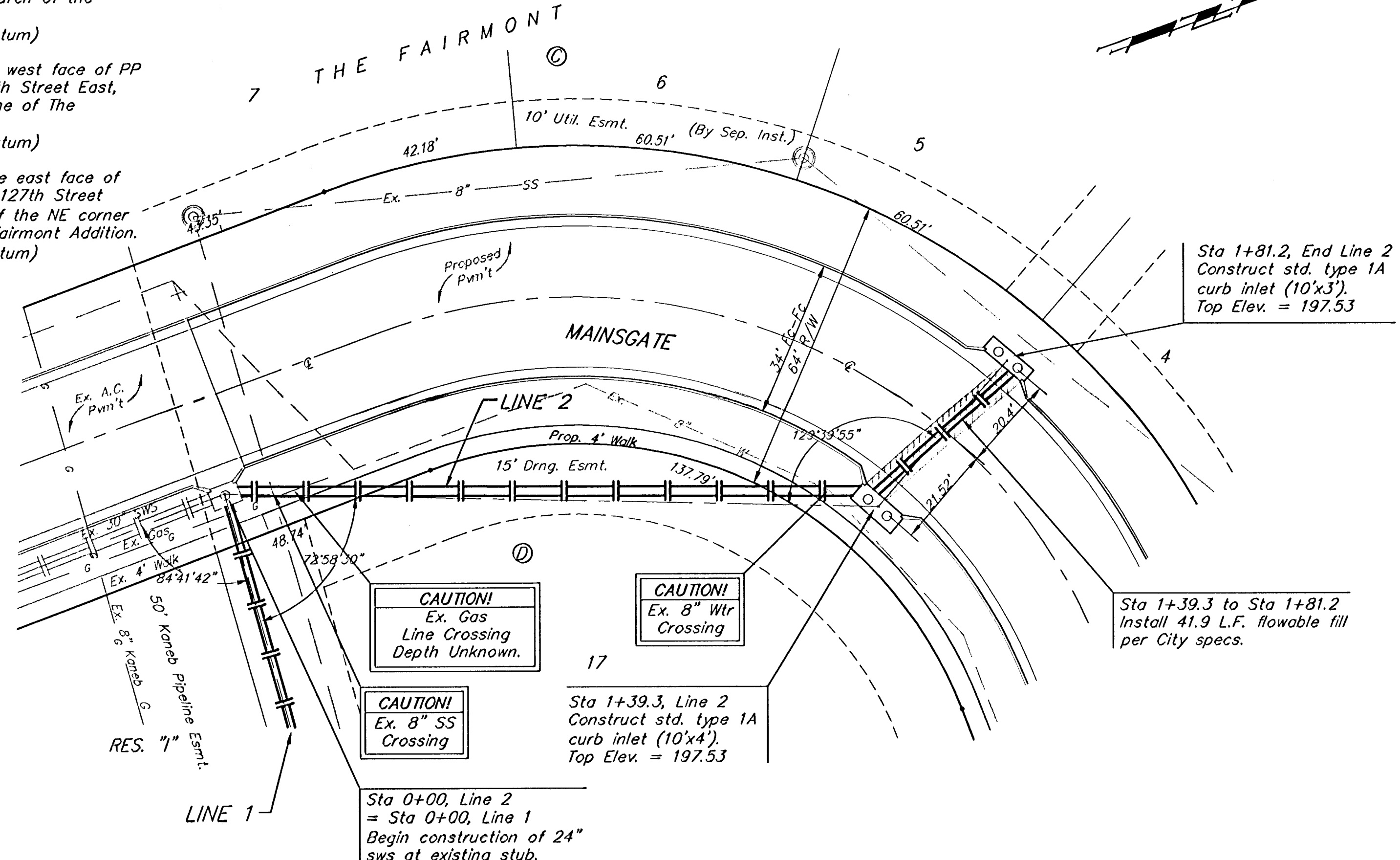


BENCHMARKS:
 BM #1: "□" Cut on T.C., 12' west of east end of N curb return on the north drive entrance of the Church of the Magdalen.
 Elev. = 190.48 (City Datum)
 BM #2: RR spike on the west face of PP on the east side of 127th Street East, adjacent to the south line of the Fairmont Addition.
 Elev. = 187.25 (City Datum)
 BM #3: RR spike on the east face of PP on the west side of 127th Street East, 37' N and 13' E of the NE corner of Lot 1, Block H, The Fairmont Addition.
 Elev. = 189.19 (City Datum)

Scale: 1" = 20' Horizontal
 1" = 5' Vertical
 • = Iron



		THE FAIRMONT - PHASE III LINE 2 & 3 STORM WATER SEWER IMPROVEMENTS	
		<small>Baughman Company, P.A. 315 Ellis St. Wichita, KS 67211 F316383-2731 F316383-0149 ENGINEERING SURVEYING PLANNING LANDSCAPE ARCHITECTURE</small>	
PROJECT NUMBER 472-83485	DESIGN ATD	DRAWN TMS	REVISIONS:
APPROVED:	DATE 09/05	SCALE Noted	SHEET 14 OF 27
<small>Fairmont/PhaseIII/SWS3</small>		<small>0404-E871</small>	