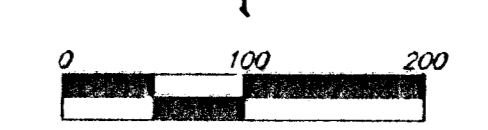
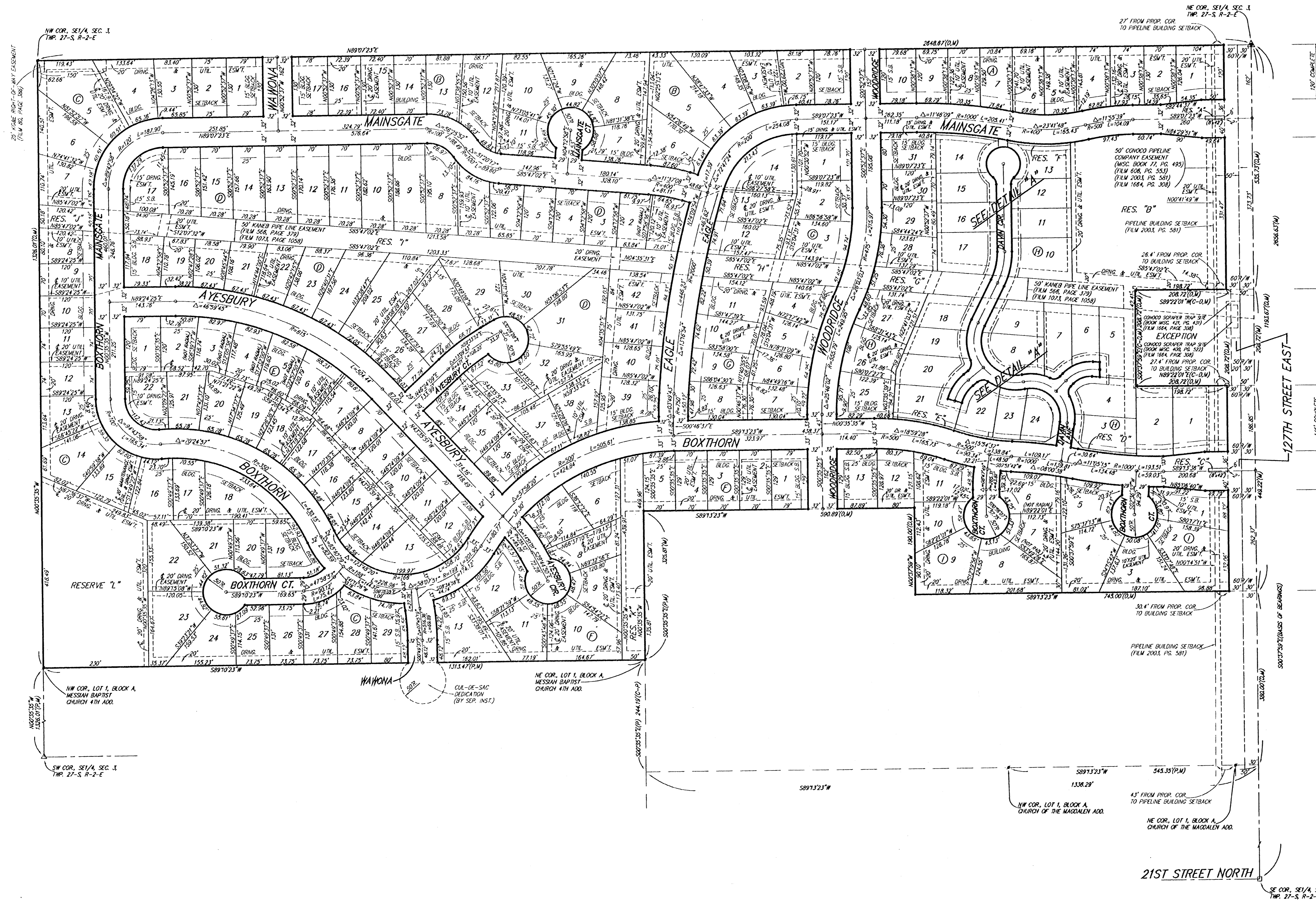


THE FAIRMONT

AN ADDITION TO WICHITA, SEDGWICK COUNTY, KANSAS



- = #4 REBAR W/ "BAUGHMAN" CAP (SET)
- = #4 REBAR W/ "BAUGHMAN" CAP (FOUND)
- = 5/4" IRON (FOUND)
- △ = #5 REBAR W/ "TONGY" CAP (FOUND)
- △ = #4 REBAR OVER STONE (FOUND)
- = "Y" NOTCH (SET)
- = #2 STEEL BRACE POST (FOUND)
- × = #4 REBAR W/ "SFB" CAP (FOUND)

- (M) = MEASURED
- (P) = PLATTED
- (D) = DESCRIBED
- (C-D) = CALCULATED PER DESCRIBED INFO.
- (C-P) = CALCULATED PER PLATTED INFO.

MINIMUM BUILDING PAD ELEVATIONS FOR LOWEST OPENING TO THE STRUCTURES		
LOT(S)	BLOCK	ELEVATION CITY DATUM 1910/29
14, 15, 16, 22, 23	C	198.5 198.9
5-10	F	198.5 198.9
5-7, 9-13	H	198.0 197.4

BENCHMARK:
GREENWICH AND 21ST NORTH
CITY OF WICHITA BENCHMARK DISC
41" SOUTH AND 58" WEST OF IRON CTR. LINE DOT
17.0' SW OF ASPHALT, 14.2' EAST OF FACE P.P.
17.0' WEST OF FACE P.P.
ELEVATION = 121.98 (CITY DATUM), 1381.38 NGVD

COUNTY "13" CUT, SOUTH HEADWALL
1/2 MILE WEST OF 127TH ST. EAST
ON 37TH STREET NORTH
ELEV. = 195.85 (CITY DATUM), 1323.23 NGVD

TOP OF IRON - SE COR., SE 1/4, SEC. 3,
TWP. 27-S, R-2-E, (127TH ST. EAST &
21ST ST. NORTH).
ELEV. = 198.01 (CITY DATUM), 1385.41 NGVD

NOTE:
A master grading plan for drainage has been developed for this subdivision and is on file with the City of Wichita, Kansas. All drainage easements, right-of-ways, or reserves shall remain at established grades or as modified with the approval of the City Engineer of the City of Wichita, Kansas. No obstructions which impede the flow of this drainage system be allowed.