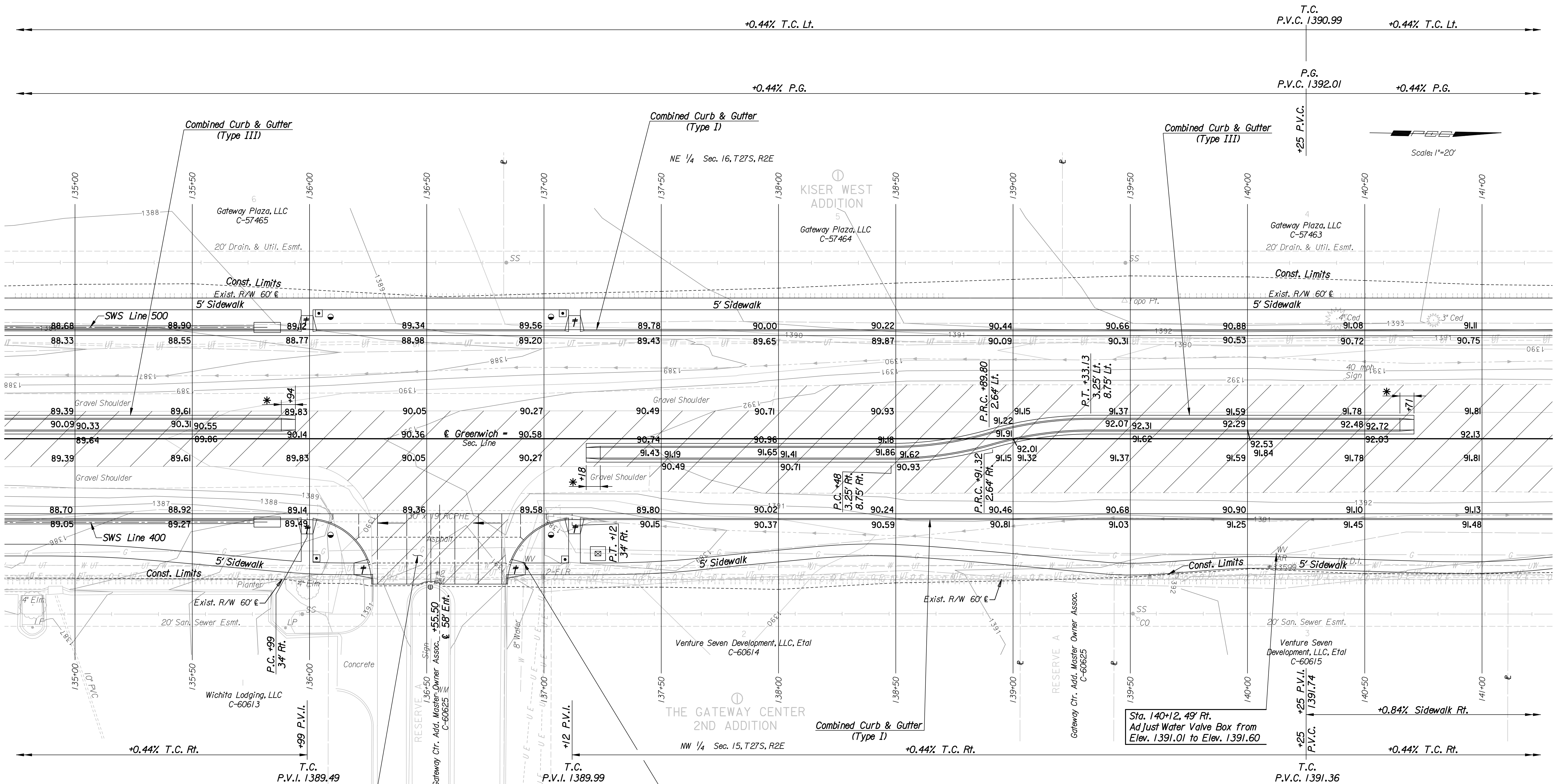


DSNR: JPS OPER: SVB SCALE: 1"=20'
 I:/2006/06471/PLAN/06471-Plan 135.DGN 04-23-2007 16:00:00 LAST REV: 5-31-2007 BY: svb



REMOVAL OF EXISTING STRUCTURES *		
STATION	SIDE	ITEM
136+56	Rt.	30' x 19' RCPHE with End Sects.
140+41	Lt.	Sign

* For Information Only

See Sh. No. 28 for Intersection Details

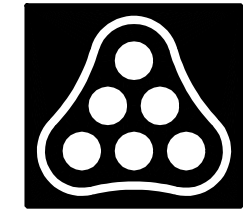
BM #2 - Found Chiseled "M" on top of curb, W end of median in entrance to Plazzo Shopping Complex (63' Rt. & Greenwich Rd. Sta. 136+52) Elev. 1391.725

Sta. 136+91, 53' Rt. Adjust Water Valve Box from Elev. 1389.95 to Elev. 1391.06

Sta. 140+12, 49' Rt. Adjust Water Valve Box from Elev. 1391.01 to Elev. 1391.60

- UTILITIES**
- Cable TV Cox Communications
 - Gas Kansas Gas Service
 - Power Westar Energy
 - Sanitary Sewer Wichita Water & Sewer Dept.
 - Telephone AT&T
 - Water Wichita Water & Sewer Dept.

- LEGEND**
- † Wheelchair Ramp
 - * 6' Transition from Combined Curb & Gutter (Type III) to no curb.
 - ⊙ Traffic Signal Service Box. See Sh. No. 70
 - ⊠ Traffic Signal Pole. See Sh. No. 69
 - ⊡ Traffic Signal Controller with Pad. See Sh. No. 70



Revision		By	Date
GREENWICH ROAD			
PLAN			
STA. 135+00 TO STA. 141+00			
JAMES L. ARMOUR, P.E. - CITY ENGINEER CITY OF WICHITA PROJECT NO. 472-84435			
Professional Engineering Consultants, P.A. 303 S. TOPKA • WICHITA, KANSAS 67202 316-262-2691 • FAX 316-262-3003			
Designed by	JPS	Job No.	06471
Drawn by	SVB	Date	June, 2007
			Sht. 10 of 97