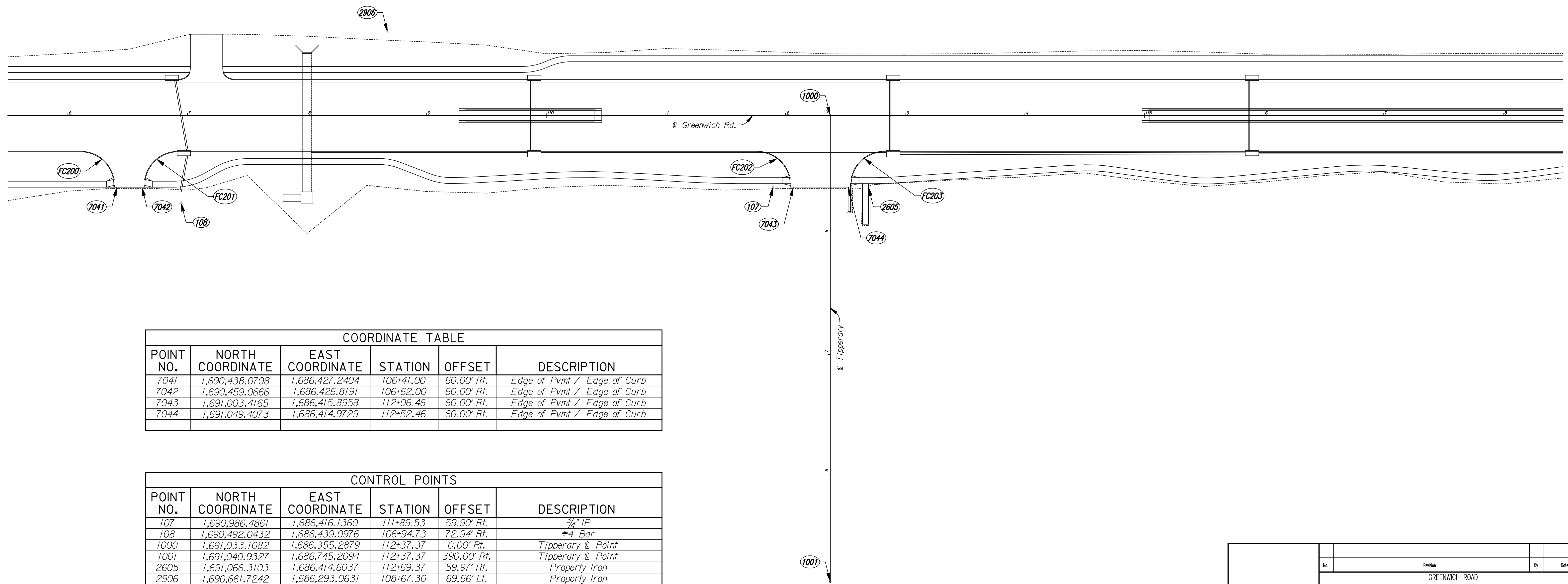


NO.	Δ	R	T	L	E	CURVE DATA							
						P.C. COORDINATES		P.I. COORDINATES		P.T. COORDINATES		C.C. COORDINATES	
						NORTH	EAST	NORTH	EAST	NORTH	EAST	NORTH	EAST
FC200	90°00'00" Rt.	28.00'	28.00'	43.98'	11.60'	1,690,407.4704	1,686,397.8484	1,690,435.4648	1,686,397.2866	1,690,436.0265	1,686,425.2810	1,690,408.0322	1,686,425.8427
FC201	90°00'00" Rt.	28.00'	28.00'	43.98'	11.60'	1,690,461.0215	1,686,424.7794	1,690,460.4597	1,686,396.7850	1,690,488.4541	1,686,396.2233	1,690,489.0159	1,686,424.2176
FC202	90°00'00" Rt.	28.00'	28.00'	43.98'	11.60'	1,690,972.7223	1,686,386.5056	1,691,000.7167	1,686,385.9439	1,691,001.2784	1,686,413.9382	1,690,973.2841	1,686,414.5000
FC203	90°00'00" Rt.	28.00'	28.00'	43.98'	11.60'	1,691,051.2684	1,686,412.9351	1,691,050.7066	1,686,384.9407	1,691,078.7010	1,686,384.3790	1,691,079.2627	1,686,412.3733



COORDINATE TABLE					
POINT NO.	NORTH COORDINATE	EAST COORDINATE	STATION	OFFSET	DESCRIPTION
7041	1,690,438.0708	1,686,427.2404	106+41.00	60.00' Rt.	Edge of Pvmt / Edge of Curb
7042	1,690,459.0666	1,686,426.8191	106+62.00	60.00' Rt.	Edge of Pvmt / Edge of Curb
7043	1,691,003.4165	1,686,415.8958	112+06.46	60.00' Rt.	Edge of Pvmt / Edge of Curb
7044	1,691,049.4073	1,686,414.9729	112+52.46	60.00' Rt.	Edge of Pvmt / Edge of Curb

CONTROL POINTS					
POINT NO.	NORTH COORDINATE	EAST COORDINATE	STATION	OFFSET	DESCRIPTION
107	1,690,986.4861	1,686,416.1360	111+89.53	59.90' Rt.	3/4" IP
108	1,690,492.0432	1,686,439.0976	106+94.73	72.94' Rt.	#4 Bar
1000	1,691,033.1082	1,686,355.2879	112+37.37	0.00' Rt.	Tipperary E Point
1001	1,691,040.9327	1,686,745.2094	112+37.37	390.00' Rt.	Tipperary E Point
2605	1,691,066.3103	1,686,414.6037	112+69.37	59.97' Rt.	Property Iron
2906	1,690,661.7242	1,686,293.0631	108+67.30	69.66' Lt.	Property Iron

DSNR: JPS OPER: MJW SCALE: I:/2006/06471/GEOMETRY/06471-GEOMETRY106.DGN LAST REV: 5-31-2007 BY: svb

No.		Revision		By	Date
GREENWICH ROAD					
COORDINATE GEOMETRY PLAN					
STA. 106+00 TO STA. 118+00					
JAMES L. ARMOUR, P.E. - CITY ENGINEER CITY OF WICHITA PROJECT NO. 472-84435					
Professional Engineering Consultants, P.A. 303 S. TOPEKA • WICHITA, KANSAS 67202 316-262-2691 • FAX 316-262-3003					
Designed by	JPS	Job No.	06471	Sht. 13 of 97	
Drawn by	MJW	Date	June, 2007		