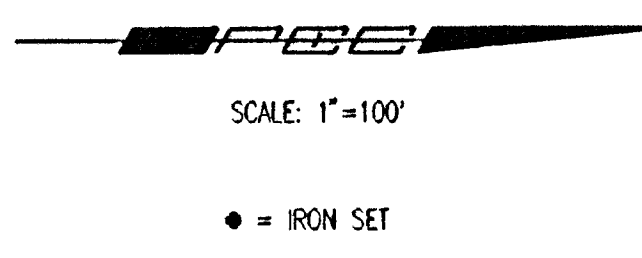
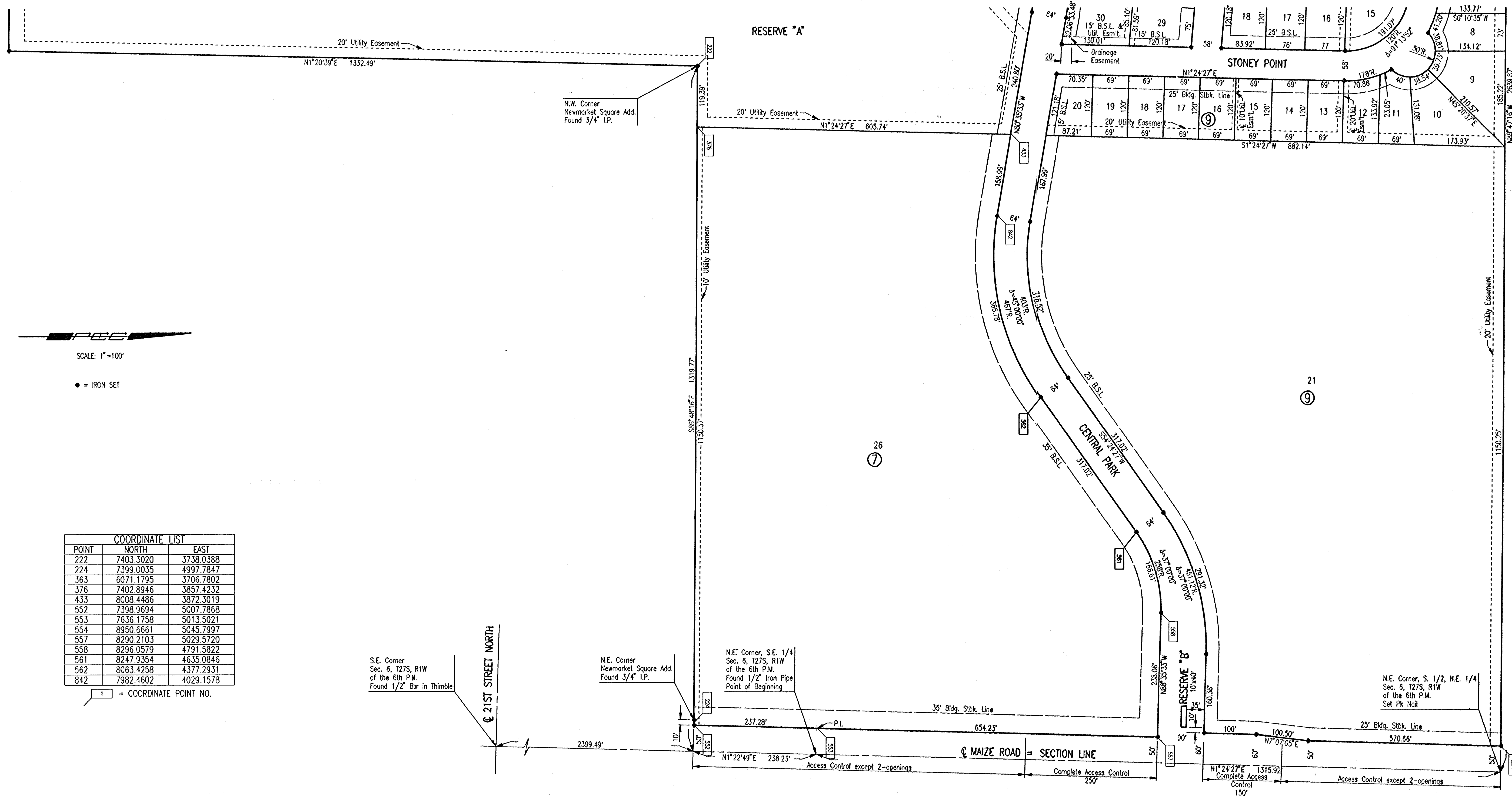


# EVERGREEN

AN ADDITION TO WICHITA, SEDGWICK COUNTY, KANSAS



COORDINATE LIST		
POINT	NORTH	EAST
222	7403.3020	3738.0388
224	7399.0035	4997.7847
363	6071.1795	3706.7802
376	7402.8946	3857.4232
433	8008.4486	3872.3019
552	7398.9694	5007.7868
553	7636.1758	5013.5021
554	8950.6661	5045.7997
557	8290.2103	5029.5720
558	8296.0579	4791.5822
561	8247.9354	4635.0846
562	8063.4258	4377.2931
842	7982.4602	4029.1578

1 = COORDINATE POINT NO.

S.E. Corner  
Sec. 6, T27S, R1W  
of the 6th P.M.  
Found 1/2" Bar in Thimble

N.E. Corner  
Newmarket Square Add.  
Found 3/4" I.P.

N.E. Corner, S.E. 1/4  
Sec. 6, T27S, R1W  
of the 6th P.M.  
Found 1/2" Iron Pipe  
Point of Beginning

N.E. Corner, S. 1/2, N.E. 1/4  
Sec. 6, T27S, R1W  
of the 6th P.M.  
Set Pk Nail

DSWR: PEC OPER: JLM SCALE: 1"=100.00  
 C:\2004\04090\000\City SS\04090-000-C-EvergreenPlat02 03-28-2005 11:07:32 am

	Revision				
	LATERAL 1, MAIN 6 OF THE NORTHWEST INTERCEPTOR SEWER <b>EVERGREEN PLAT</b> JAMES L. ARMOUR, P.E. - ACTING CITY ENGINEER CITY OF WICHITA PROJECT NO. 468-83969 <b>Professional Engineering Consultants, P.A.</b> 303 S. TOPEKA • WICHITA, KANSAS 67202 316-262-2691 • FAX 316-262-3003				
Designed by	MDK	Job No.	35-04090-5054	Sht. 5 of 18	
Drawn by	JGA	Date	January 2005		