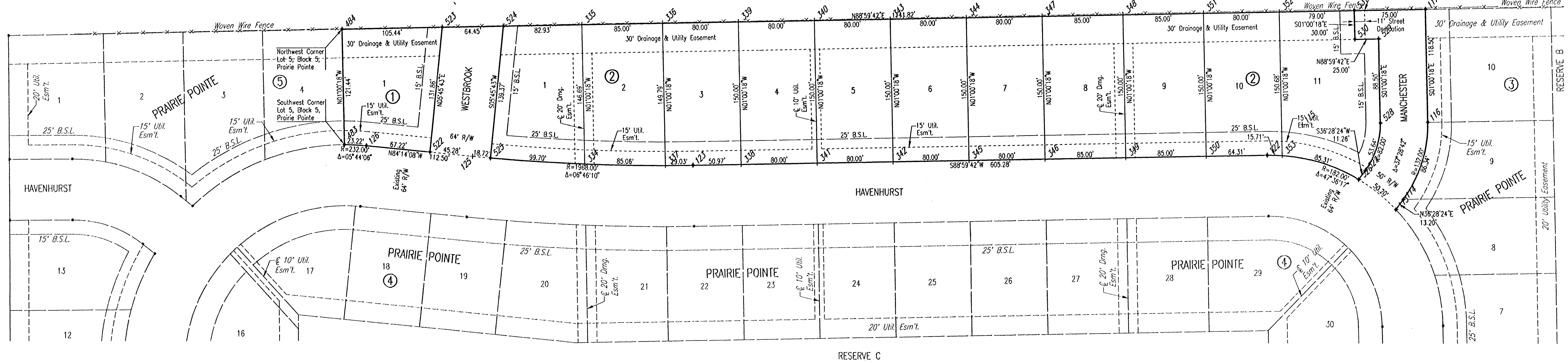


PRAIRIE POINTE 2ND

AN ADDITION TO WICHITA, SEDGWICK COUNTY, KANSAS

OWNER: JEAN E. WOODARD REVOCABLE TRUST
UNPLATTED - CITY OF MAIZE - TO BE PLATTED AS "HAMPTON LAKES ADDITION"

OWNER: JEAN E. WOODARD REVOCABLE TRUST
UNPLATTED - CITY OF MAIZE - TO BE PLATTED AS "HAMPTON LAKES ADDITION"



SCALE: 1" = 50'
 • = 1/2" REBAR WITH PEC CAP UNLESS OTHERWISE NOTED
 B.S.L. = BUILDING SETBACK LINE

COORDINATE LIST		
POINT	NORTH	EAST
113	11,047.4847	8,889.7747
114	11,058.0999	8,897.6219
115	11,136.5672	8,791.4763
116	11,138.8821	8,923.4560
117	11,257.3595	8,921.3779
122	11,104.4067	8,754.3464
123	11,093.7918	8,149.1595
125	11,103.4413	7,916.9782
126	11,114.7409	7,805.0473
334	11,095.0979	8,035.0872
335	11,241.7689	8,032.5146
336	11,243.2596	8,117.5015
337	11,093.4968	8,120.1284
338	11,094.6856	8,200.1198
339	11,244.6626	8,197.4892
340	11,246.0655	8,277.4769
341	11,096.0886	8,280.1075
342	11,097.4916	8,360.0952
343	11,247.4685	8,357.4646
344	11,248.8715	8,437.4523
345	11,098.8946	8,440.0829
346	11,100.2976	8,520.0706
347	11,250.2745	8,517.4400
348	11,251.7651	8,602.4269
349	11,101.7882	8,605.0575
350	11,103.2789	8,690.0445
351	11,253.2558	8,687.4139
352	11,254.6588	8,767.4016
353	11,104.0046	8,770.0440
483	11,115.9141	7,781.8645
484	11,237.3352	7,779.7348
522	11,107.9896	7,871.9232
523	11,239.1843	7,885.1614
524	11,240.3146	7,949.6004
525	11,101.6500	7,935.6085
526	11,078.7696	8,850.7230
527	11,087.8224	8,857.4152
528	11,138.0052	8,873.4637
529	11,226.4873	8,871.9117
530	11,226.0489	8,846.9155
531	11,256.0442	8,846.3894

+106 = COORDINATE POINT NO.

No.	Revision	By	Date
PRAIRIE POINTE-PHASE 2			
PLAT			
JAMES L. ARMOUR, P.E.-CITY ENGINEER CITY OF WICHITA PROJECT NO. 472-84042			
Professional Engineering Consultants, P.A. 303 S. TOPEKA • WICHITA, KANSAS 67202 316-262-2691 • FAX 316-262-3003			
Designed by	BDB, BLB	Job No.	35-05300-000
Drawn by	BJS	Date	May 2005
			Sheet 4 of 38

DSNR: BLB OPER: BJS SCALE: 1"=50.00
 C:\2005\053000\000\05300-000-C-Plat2 09-26-2005 04:46:26 pm