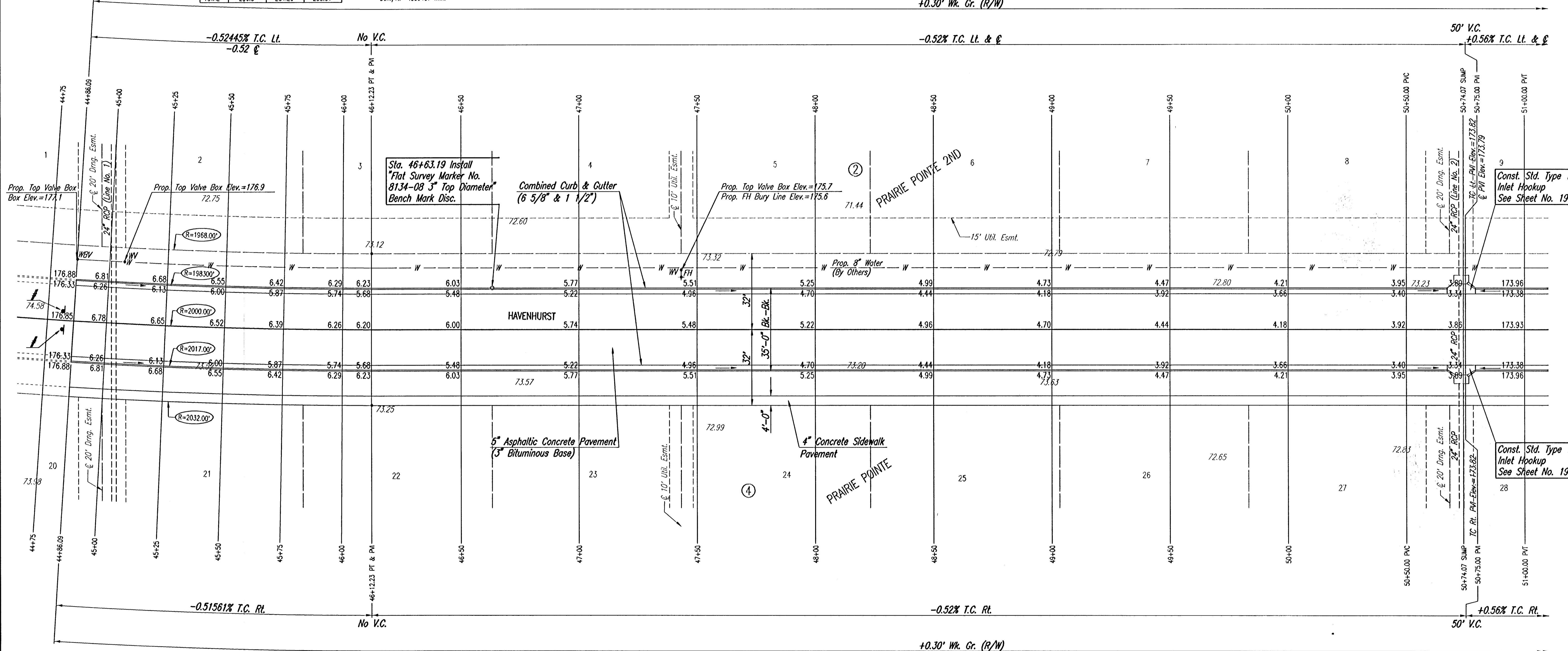


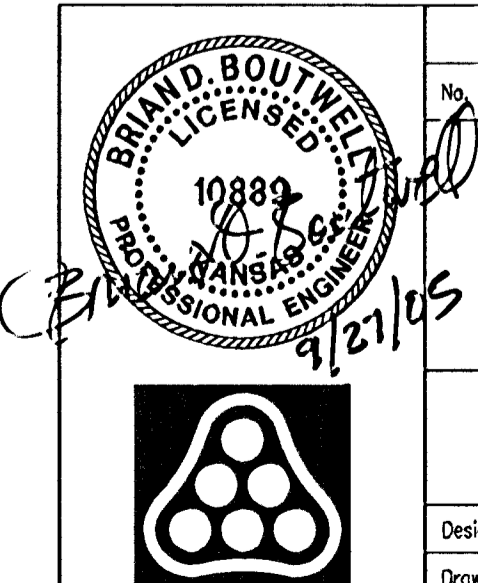
C CURVE DATA						
A=6°46'10" L		D=2' 51" 53.2'		R=2000.00' L=236.3'		T=118.29' E=3.49'
CURVE DATA BASED ON C radius Δ/2= 3' 23' 5"						
STATION	ARC LENGTH	FACE CURB LENGTH	CHORD LENGTH	DEFLECTION ANGLE	DEFLECTION	TOTAL DEFLECTION
		LEFT CURB	RIGHT CURB	8' OFF LEFT FACE CURB	8' OFF RIGHT FACE CURB	
43+75.93				0°00'00.0"		0°00'00.0"
44+00.00	24.07'	23.87'	24.27'	23.77'	24.37'	0°20'41.2"
44+25.00	25.00'	24.79'	25.21'	24.69'	25.31'	0°21'29.2"
44+50.00	25.00'	24.79'	25.21'	24.69'	25.31'	0°21'29.2"
44+75.00	25.00'	24.79'	25.21'	24.69'	25.31'	0°21'29.2"
44+86.09	11.09'	11.00'	11.18'	10.95'	11.23'	0°09'31.9"
45+00.00	13.91'	13.79'	14.03'	13.74'	14.08'	0°11'57.3"
45+25.00	25.00'	24.79'	25.21'	24.69'	25.31'	0°21'29.2"
45+50.00	25.00'	24.79'	25.21'	24.69'	25.31'	0°21'29.2"
45+75.00	25.00'	24.79'	25.21'	24.69'	25.31'	0°21'29.2"
46+00.00	25.00'	24.79'	25.21'	24.69'	25.31'	0°21'29.2"
46+12.23	12.23'	12.12'	12.33'	12.08'	12.38'	0°10'50.7"
TOTAL	236.3'	234.29'	238.31'			Defl./ft. = .859437 min.

WATER VALVE BOX ELEVATIONS			
STREET	STATION	OFFSET	PROPOSED ELEVATION
HAVENHURST	44+86.09	26.0' LL	177.1
HAVENHURST	45+06.36	26.0' LL	176.9
HAVENHURST	47+43.19	25.0' LL	175.7

SCALE: 1"=20'



DSNR: BLB OPER: BLB SCALE: 1"=20.00
 01/2005/05-3000/000/05300-000-C-STR45-51 09-27-2005 06:46:39 am



Install OM4-3 (End of Roadway Marker)
See Sheet No. 30.

Revision	By	Date	
PRAIRIE POINTE-PHASE 2 HAVENHURST STA. 44+86.09 TO STA. 51+00 JAMES L. ARMOUR, P.E.-CITY ENGINEER CITY OF WICHITA PROJECT NO. 472-84042 Professional Engineering Consultants, P.A. 303 S. TOPEKA • WICHITA, KANSAS 67202 316-262-2691 • FAX 316-262-3003			
Designed by	BDB, BLB	Job No.	35-05300-000
Drawn by	BJB	Date	May 2005
		Sheet	9 of 38