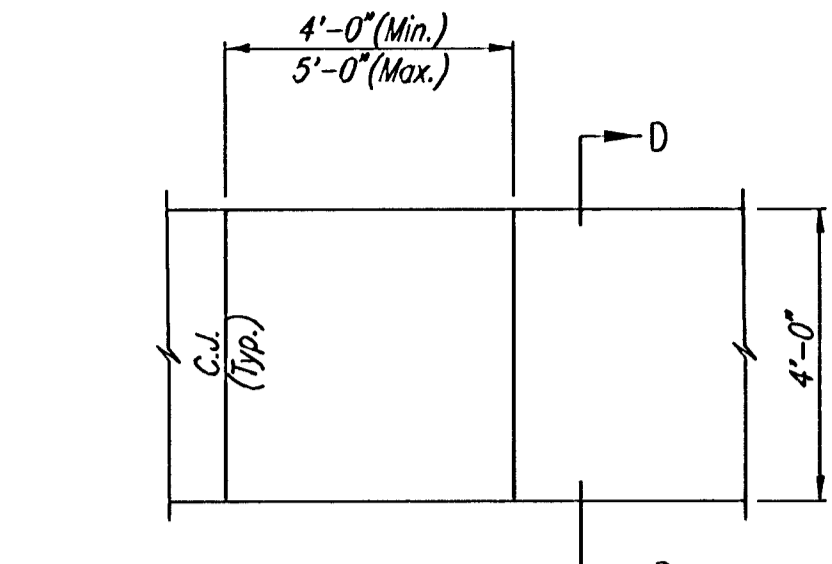
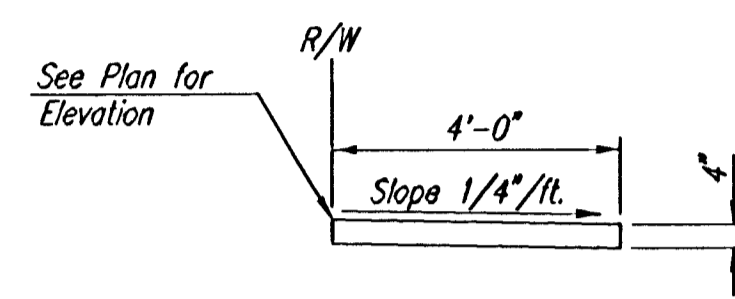


**COMPACTED FILL DETAIL
WHERE SIDEWALK IS CONSTRUCTED**
(See Plan Sheets for Locations)

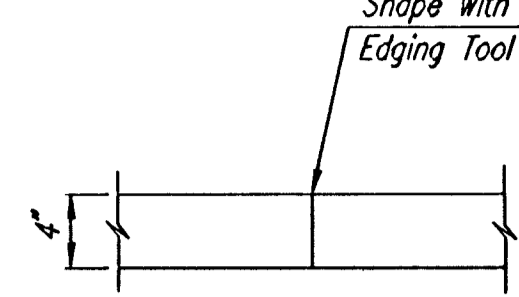


PLAN

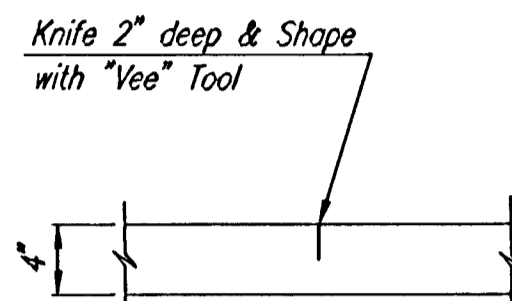


SECTION D-D

4" WALK DETAILS

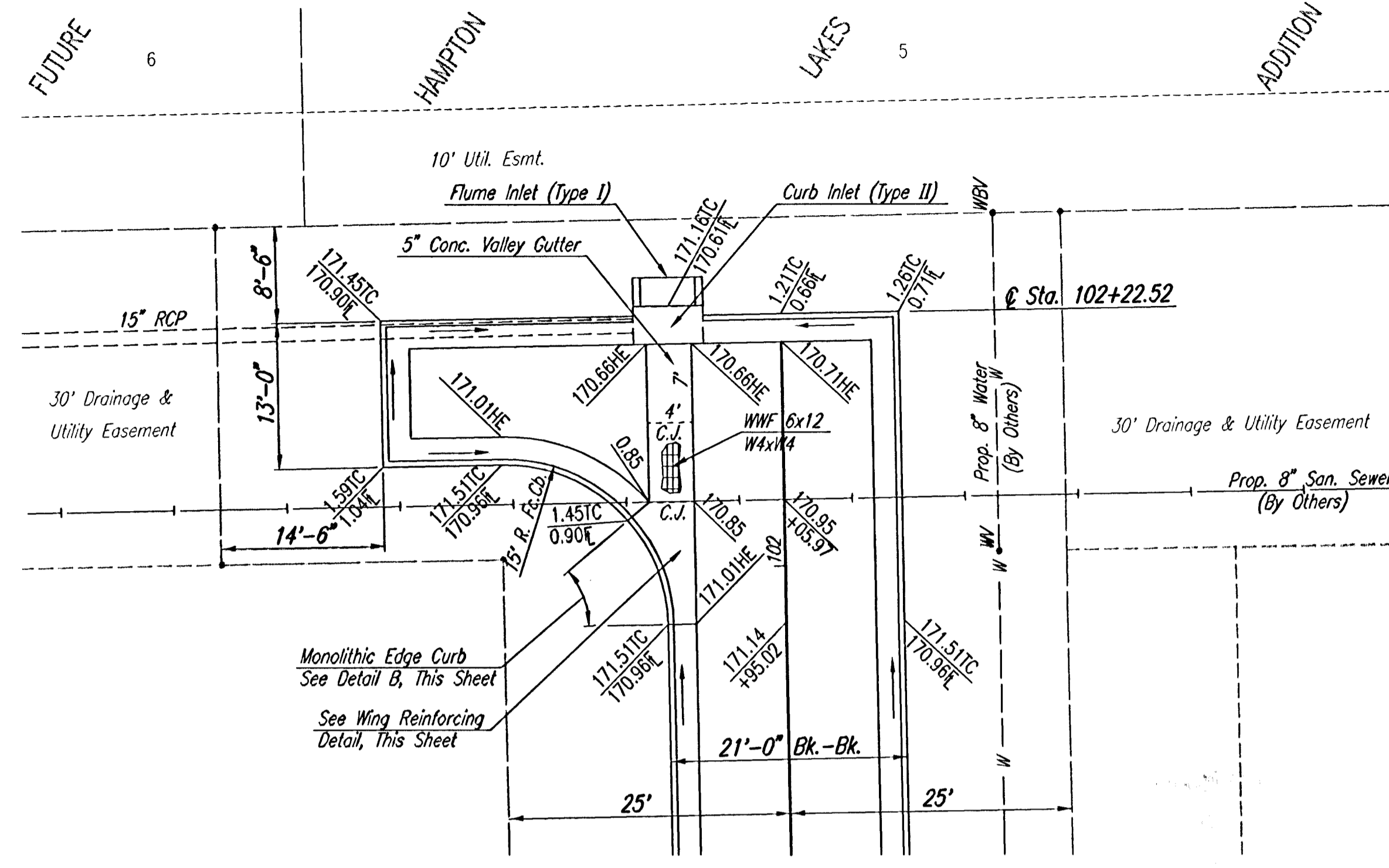


CONSTRUCTION JOINT



CONTRACTION JOINT

No sawn contraction joints will be allowed

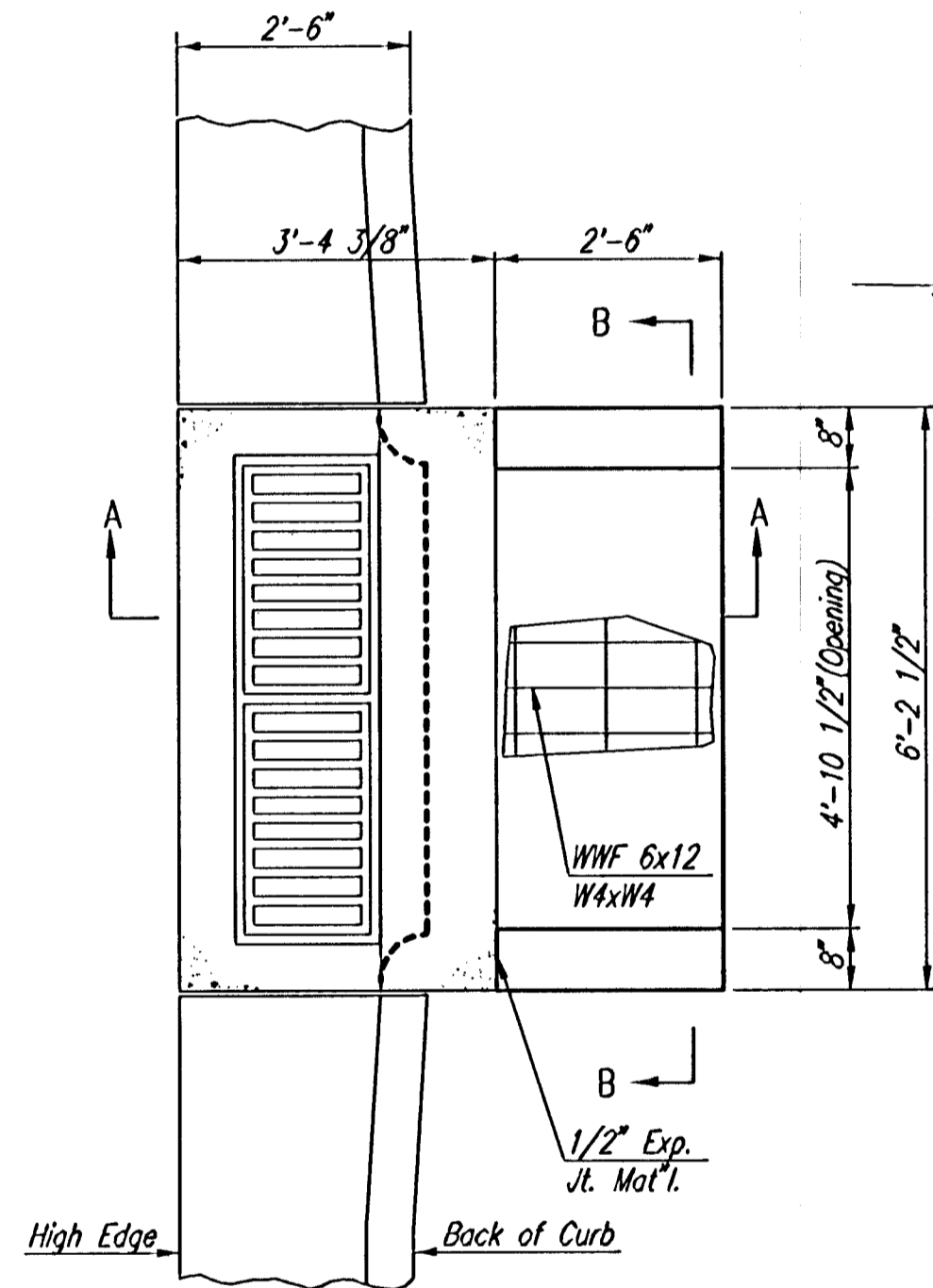


PLAN

HAMMERHEAD DETAILS

8"x12" #4/#4 WIRE FABRIC REINFORCING SHALL BE PLACED SUCH THAT THE WIRES WITH THE 6" SPACING WILL RUN PARALLEL WITH THE LONGITUDINAL JOINT.

SCALE: 1"=10'



PLAN

SCALE: 1"=2'

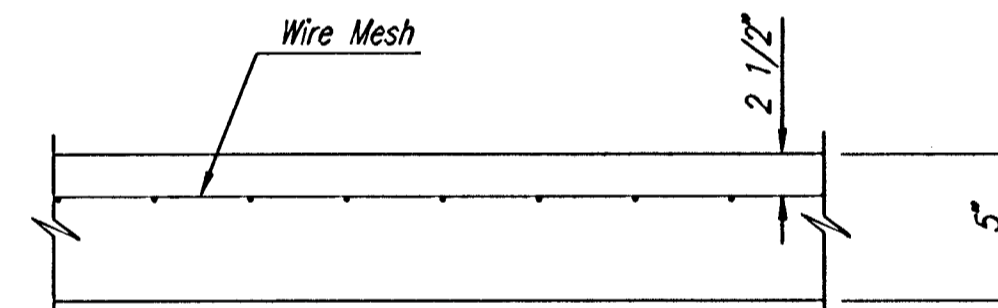
FLUME INLET GENERAL NOTES

CONCRETE SHALL BE C.O.W. STANDARD PAVING MIX. ALL EXPOSED EDGES SHALL BE FINISHED WITH AN APPROVED EDGING TOOL.

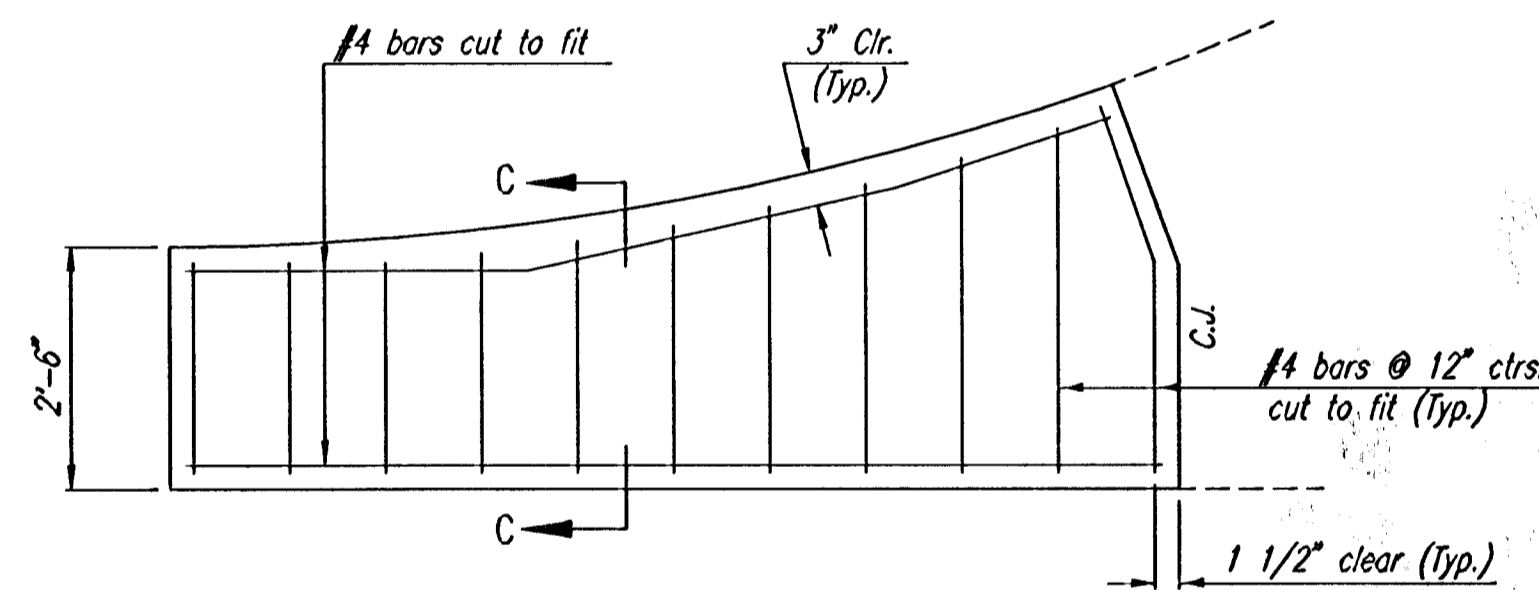
AT THE CONTRACTOR'S OPTION, CLASS A CONCRETE (AE) OR MIX USED IN CONCRETE PAVEMENT MAY BE USED THROUGHOUT.

EXPANSION JOINTS SHALL BE CONSTRUCTED OF 1/2" PREMOLDED JOINT FILLER (NON-EXTRUDING, TYPE B).

FLUME INLET SHALL BE SUBSIDIARY TO TYPE II CURB INLET. NO SEPARATE MEASUREMENT OR PAYMENT WILL BE MADE FOR MATERIALS, LABOR, TOOLS, EXCAVATION, BACKFILL, OR INCIDENTALS NECESSARY TO COMPLETE THE WORK.

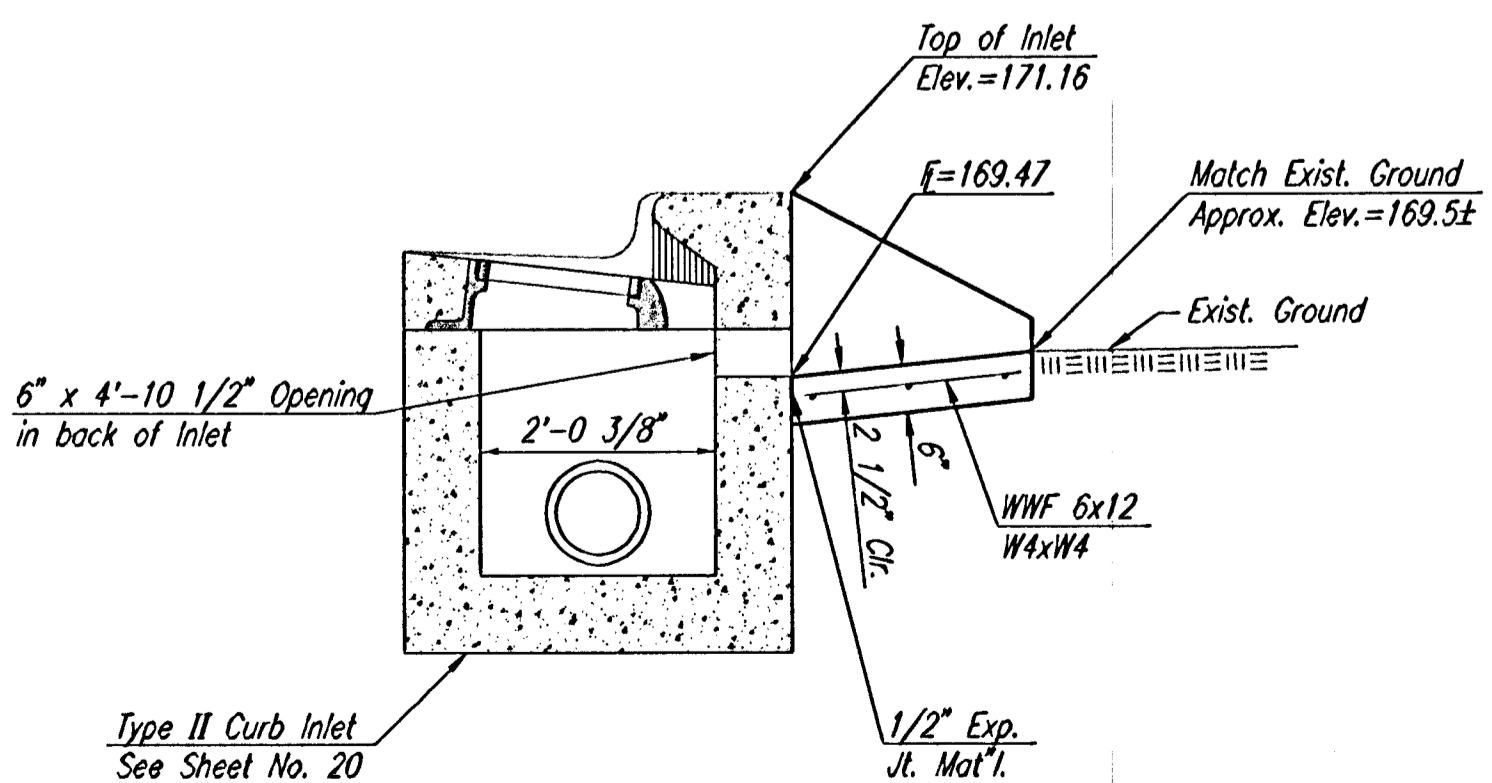


**CONTRACTION JOINT DETAIL
REINFORCED PAVEMENT
(C.J.)**

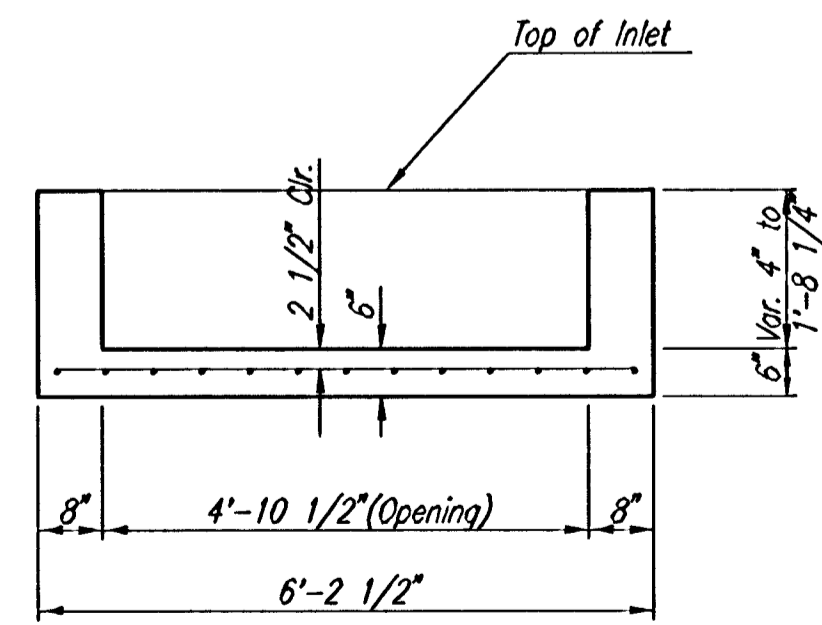


WING REINFORCING DETAIL

NOTE: OMIT WIRE FABRIC REINFORCING IN THIS SECTION.

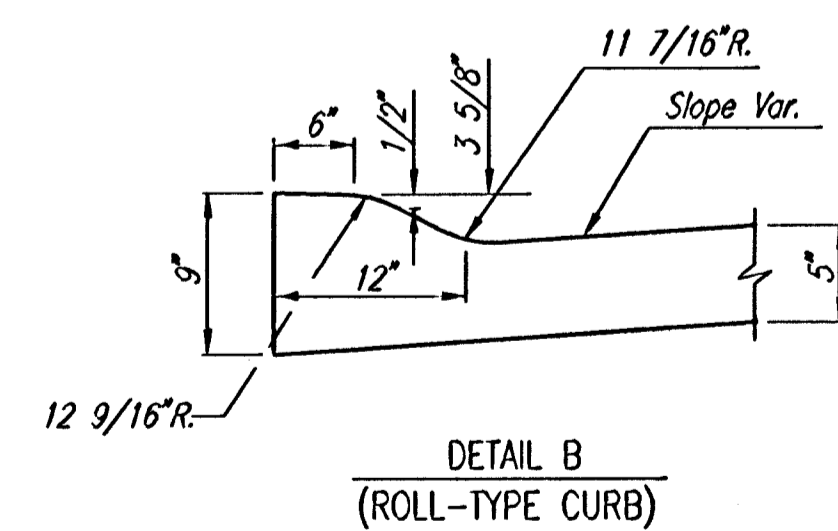


SECTION A-A

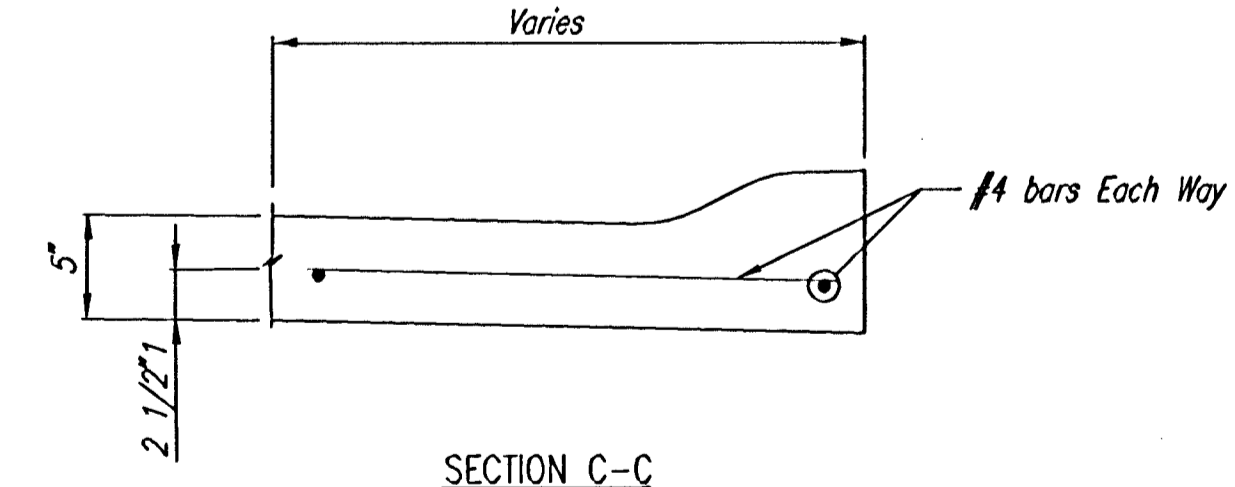


SECTION B-B

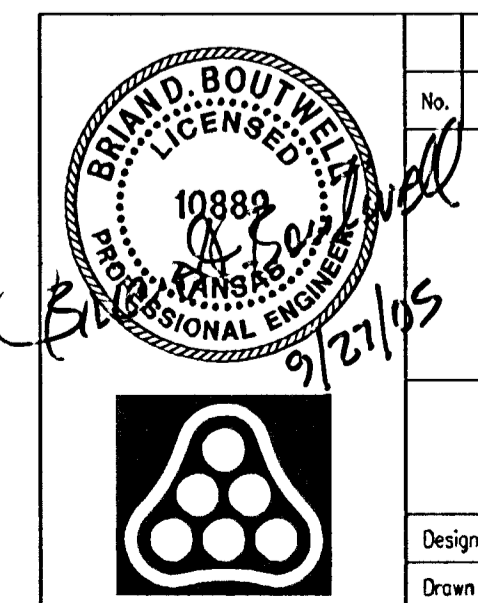
FLUME INLET (TYPE I) DETAILS



DETAIL B
(ROLL-TYPE CURB)



SECTION C-C



No.	Revision	By	Date
	PRAIRIE POINTE-PHASE 2		
MISCELLANEOUS PAVING DETAILS			
JAMES L. ARMOUR, P.E.-CITY ENGINEER CITY OF WICHITA PROJECT NO. 472-84042			
Professional Engineering Consultants, P.A. 303 S. TOPEKA • WICHITA, KANSAS 67202 316-262-2691 • FAX 316-262-3933			
Designed by	BDB, BLB	Job No.	35-05300-000
Drawn by	BJS	Date	May 2005
			Sheet 13 of 38

DSNR: BLB OPER: BJS SCALE: 1"=10.00
 CA:\2005\05300\000\05300-000-C-MISCPAVINGDITL 09-27-2005 06:56:09 am