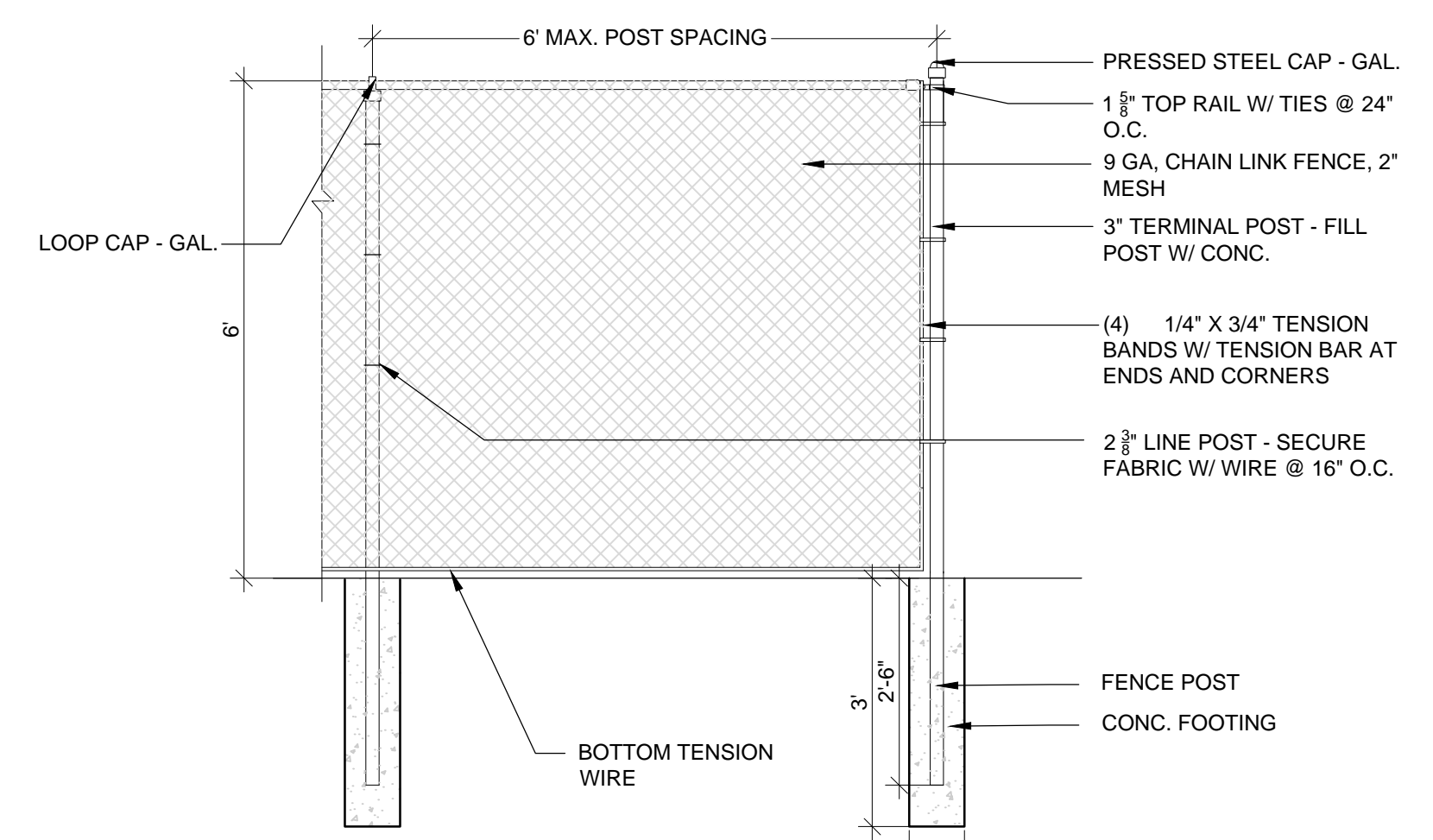
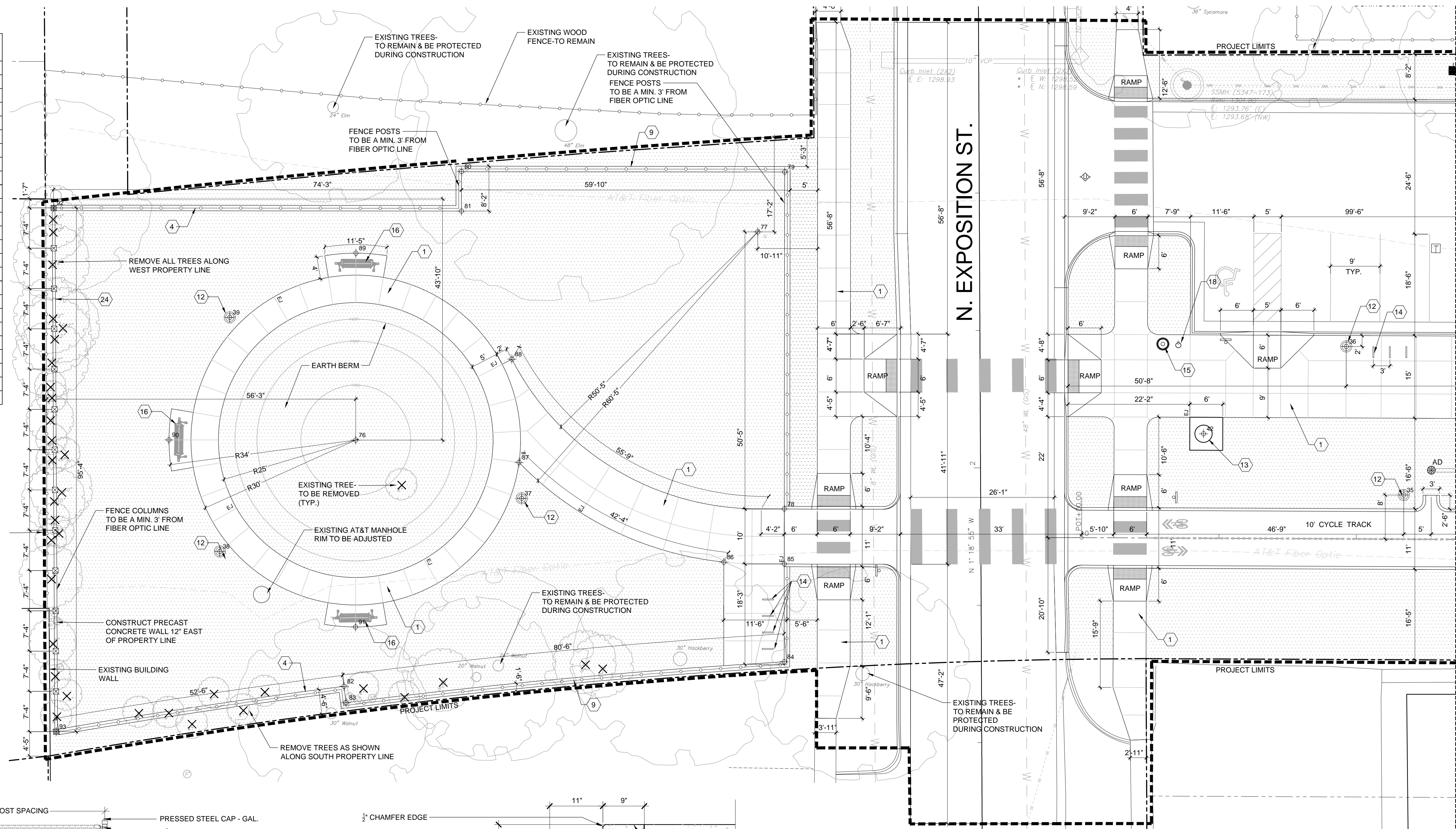


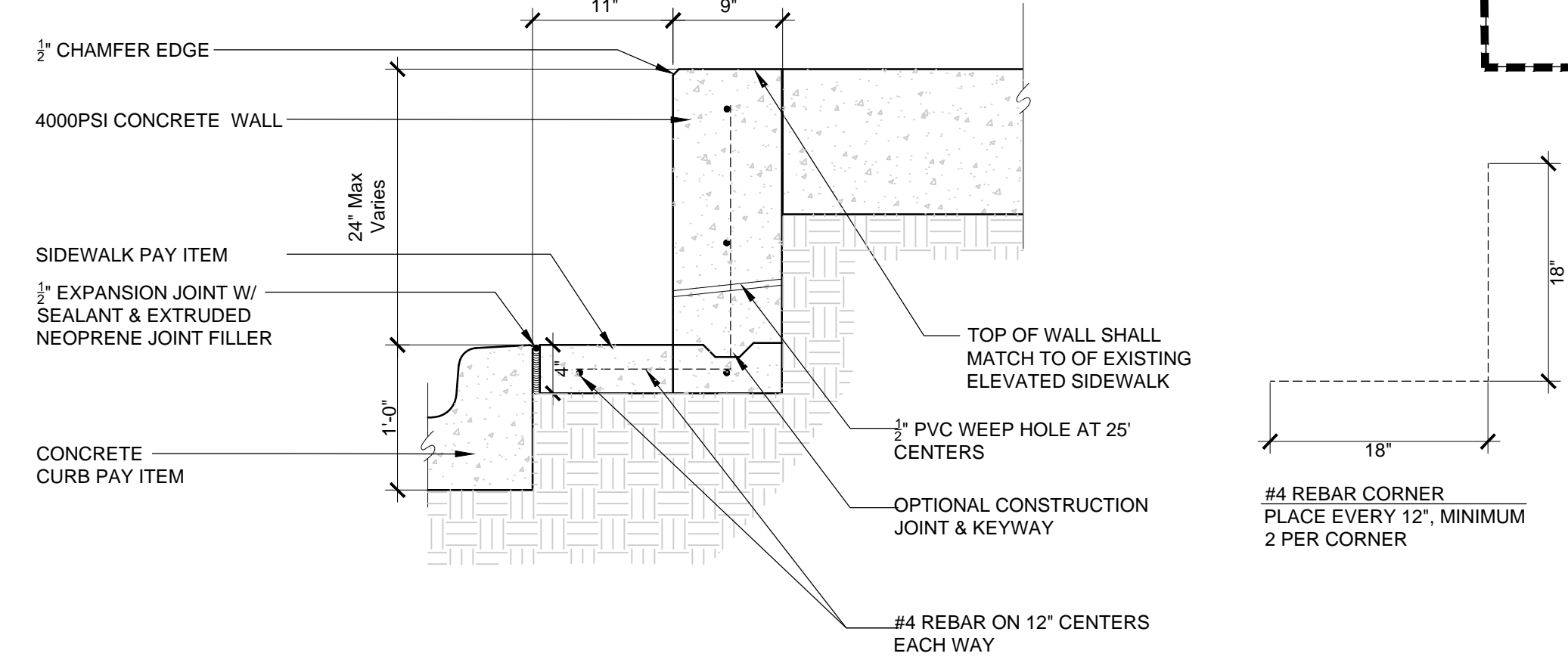
**REFERENCE**

| KEY | DESCRIPTION                         | DETAIL     |
|-----|-------------------------------------|------------|
| 1   | 4" PLAIN CONC. PAVING               | 1/SHEET 19 |
| 2   | BRICK PAVERS                        | 1/SHEET 20 |
| 3   | 5" PLAIN CONC. PAVING               | 2/SHEET 19 |
| 4   | CONCRETE BAND                       | 4/SHEET 19 |
| 5   | LIMESTONE CHAT SURFACE              | 4/SHEET 26 |
| 6   | SANDSTONE BEAM SEAT                 | 3/SHEET 20 |
| 7   | SANDSTONE BEAM WALL                 | 2/SHEET 20 |
| 8   | ENGINEERED WOOD FIBER (EWF) SURFACE | 1/SHEET 22 |
| 9   | 5' ORNAMENTAL FENCE                 | 1/SHEET 21 |
| 10  | 5' BLACK, VINYL-COATED CHAIN-LINK   | 2/SHEET 21 |
| 11  | LIGHT BOLLARD                       | REF. ELEC. |
| 12  | LIGHT POLE                          | REF. ELEC. |
| 13  | LONGHORN SCULPTURE FOUNDATION       | SHEET 25   |
| 14  | BICYCLE RACK                        | 3/SHEET 25 |
| 15  | TRASH RECEPTACLE                    | 2/SHEET 25 |
| 16  | PARK PORCH SWING                    | 4/SHEET 25 |
| 17  | BENCH - BACKLESS                    | 1/SHEET 25 |
| 18  | PET WASTE STATION                   | 3/SHEET 26 |
| 19  | DOG DISH FOUNTAIN                   | 1/SHEET 26 |
| 20  | BICYCLE REPAIR STATION              | 2/SHEET 26 |
| 21  | DOG PARK SIGNAGE                    | 6/SHEET 26 |
| 22  | DOG PARK GATE                       | 3/SHEET 21 |
| 23  | 6' CHAIN-LINK FENCE                 | 1/SHEET 24 |
| 24  | 6' PRECAST CONCRETE SCREEN WALL     | 5/SHEET 26 |
| 25  | CONCRETE RETAINING WALL             | 2/SHEET 24 |



**1 CHAIN-LINK FENCE**

SCALE: 1/2" = 1'-0"

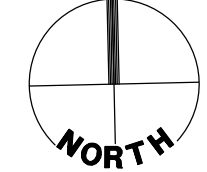


**2 CONCRETE STEP WALL**

ALL REINFORCEMENT SUBSIDIARY TO RETAINING WALL BID ITEM  
 HOLD REBAR A MIN. 2" FROM ANY EDGE OR FACE OF CONCRETE  
 RETAINING WALL SHALL BE PAID BY THE S.F.F. OF WALL AND BY THE BID ITEM 'RETAINING WALL'

**HARDSCAPE PLAN**

1" = 10'-0"  
 0 5 10 20'



**Tran Systems**  
 245 NORTH WACO  
 SUITE 222  
 WICHITA, KANSAS 67202  
 PHONE: 316-303-3000  
 FAX: 316-462-5629

CONSULTANTS:  
  
 LK ARCHITECTURE, INC.  
 345 RIVERVIEW  
 SUITE 200  
 WICHITA, KANSAS 67208  
 PHONE: 316-268-0230

DELANO GREENWAY IMPROVEMENTS  
 FROM EXPOSITION TO OSAGE STREET  
 WICHITA, KANSAS

| REVISIONS: | MARK | DATE | DESCRIPTION |
|------------|------|------|-------------|
|            |      |      |             |
|            |      |      |             |
|            |      |      |             |
|            |      |      |             |
|            |      |      |             |

PROJ NO: 472-85463  
 SCALE: 1" = 10'-0"  
 DATE: 09/30/2022  
 DESIGNED BY: J. Best  
 DRAWN BY: J. Best  
 CHECKED BY: J. Best

SHEET TITLE:  
**HARDSCAPE PLAN**

SHEET NO.  
**24**