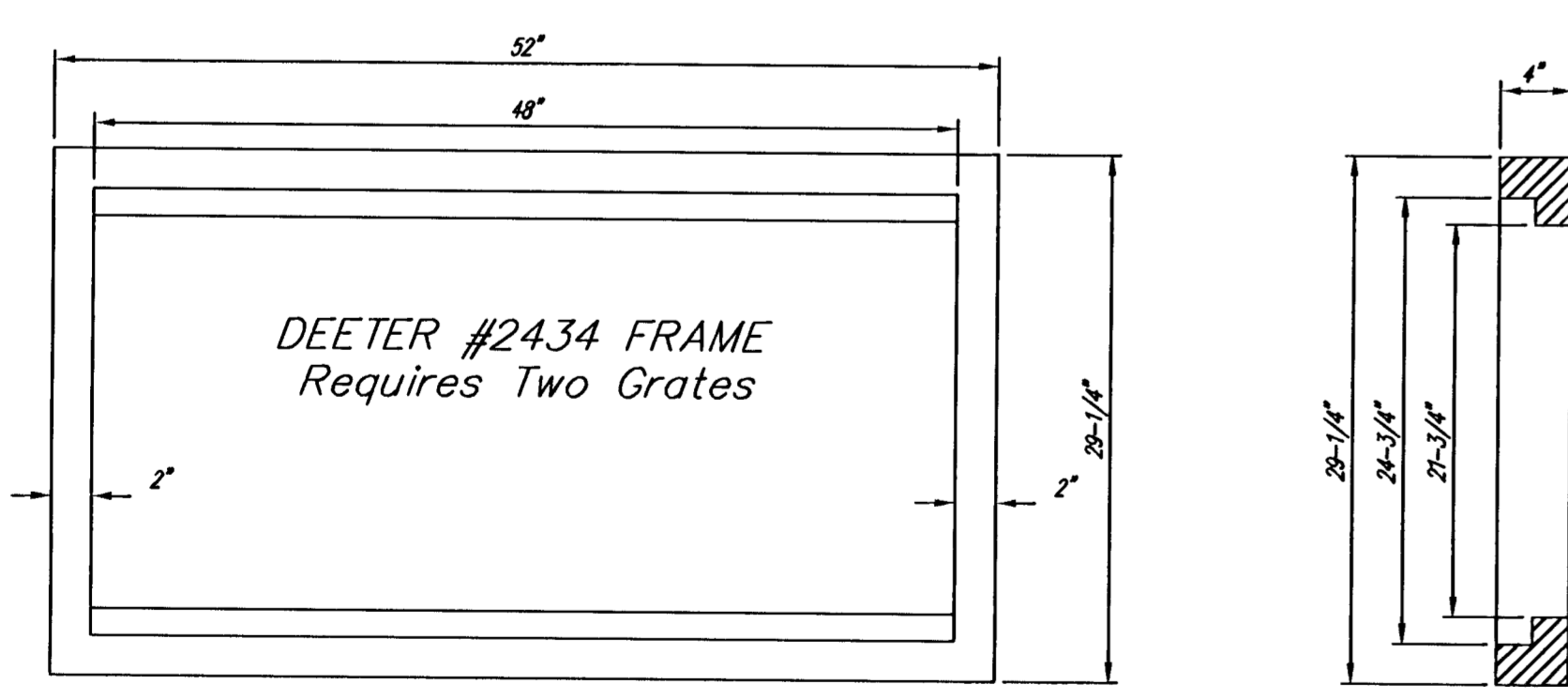
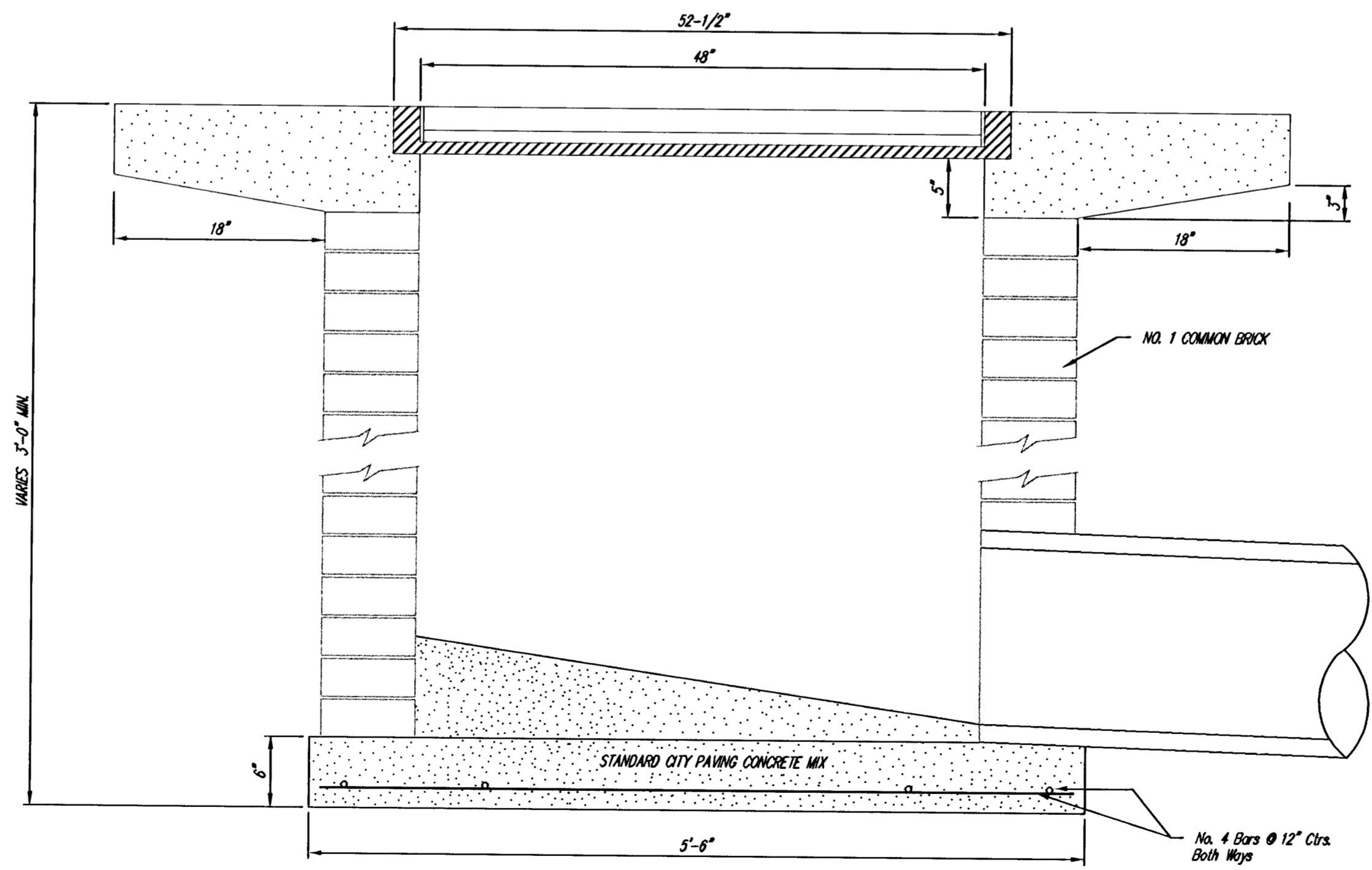
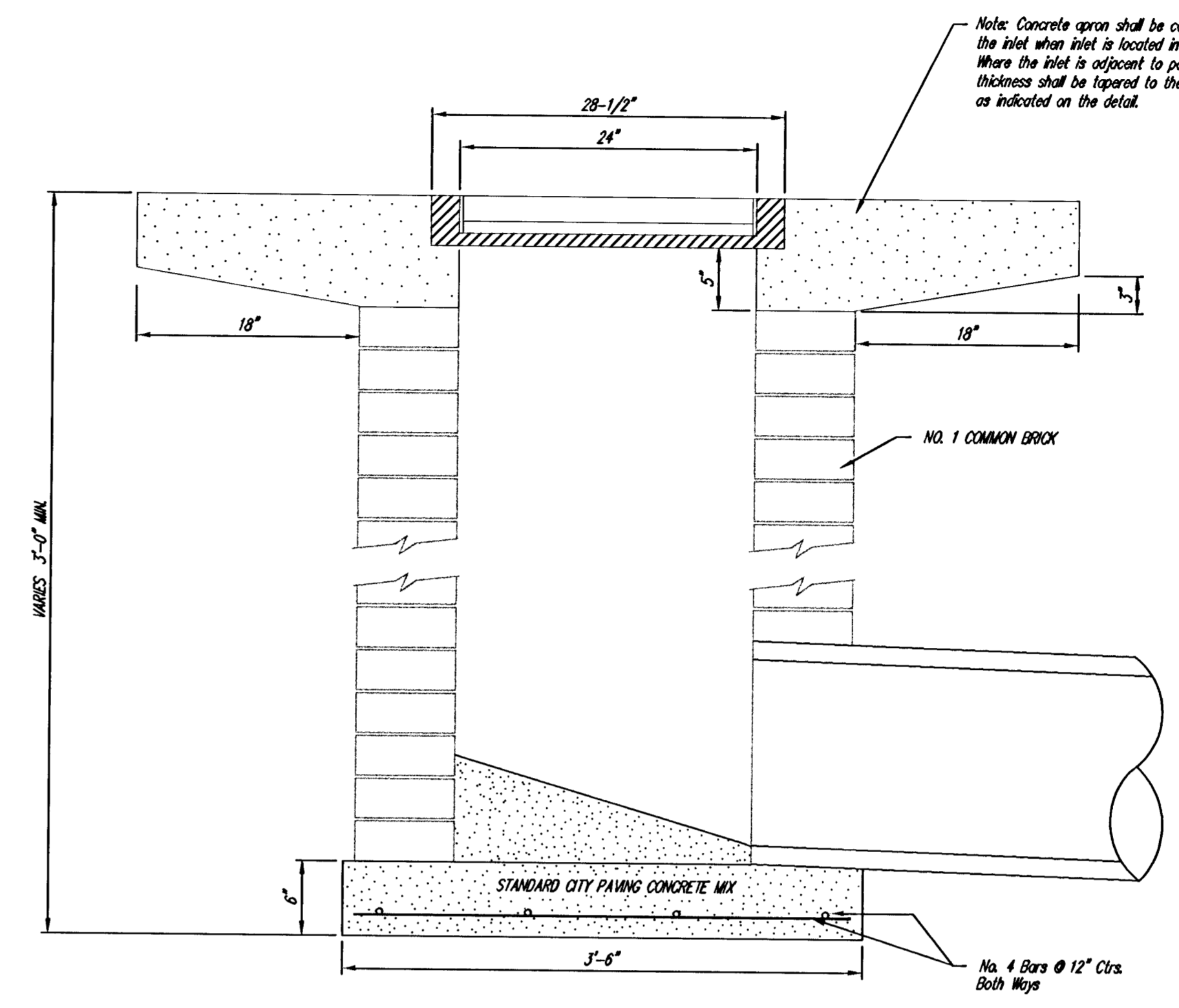
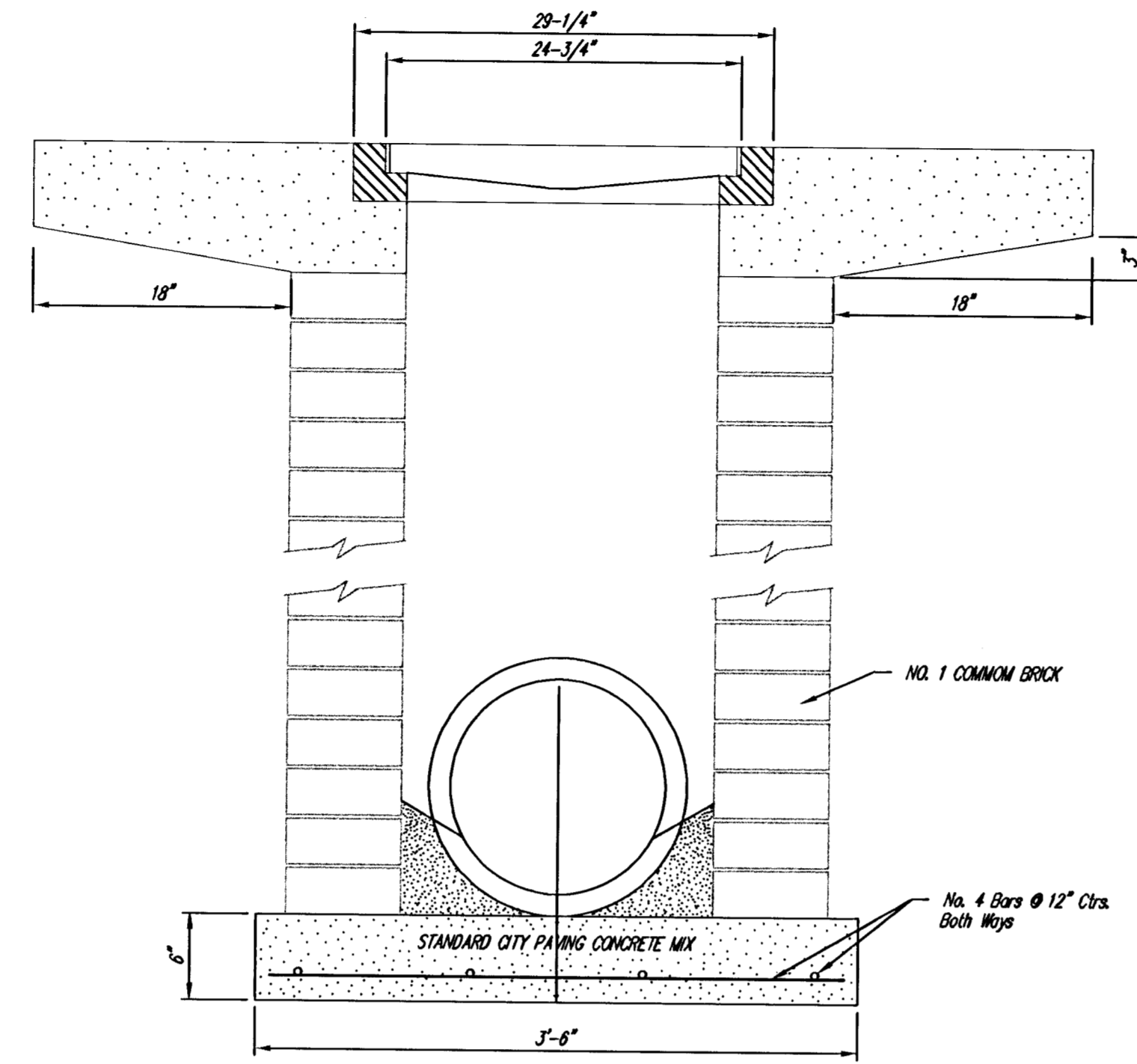


DEETER #2433 GRATE  
24" x 24" Frame and Grate Detail

NOTE: Grates shall be imprinted on the top surface with "CITY OF WICHITA" using letters at least 1" in height. Other marking methods may be approved by the engineer.



Double 24" x 24" Frame Detail



<p>THE CITY OF WICHITA</p> <p>CITY ENGINEER'S OFFICE CITY HALL - SEVENTH FLOOR 455 NORTH MAIN STREET WICHITA, KANSAS 67202 (316) 268-4501 (316) 268-4114 FAX</p>	<p><b>DROP INLET</b> 2' X 2' / 2' X 4'</p>	
	<p>M. E. LINDEBAK P.E. - CITY ENGINEER</p>	
	<p>PROJECT NUMBER 797 PPS 607861</p>	<p>INDEX CODE</p>
	<p>DATE MAR 96</p>	<p>SHEET C2 OF</p>

	<p>PROJECT NUMBER <b>472-84027</b></p>	<p>AM NO. 02153-05</p>
<p>DESIGN C.O.W.</p>	<p>DRAWN C.O.W.</p>	<p>FILE Dropint</p>
<p>DATE 12/23/04</p>	<p>SCALE N.T.S.</p>	<p>SHEET <b>12</b> OF <b>35</b></p>
<p><b>SAND PLUM ADDITION</b> <b>DROP INLET</b> WICHITA, KANSAS</p>		<p>REVISED</p>

121102153102153-05112\_Dropint.dwg Wed Jan 05 08:14:00 2005 Steve Schmitt-Poe & Associates of Kansas, Inc.