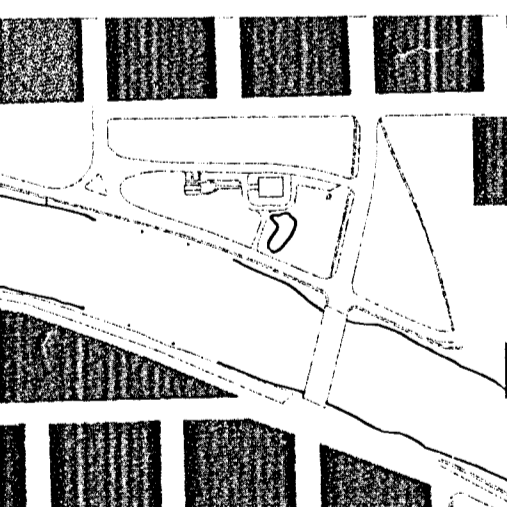




RIVERSIDE PARK SYSTEM
Riverside Pavement Contract

Wichita, Kansas

KEY PLAN



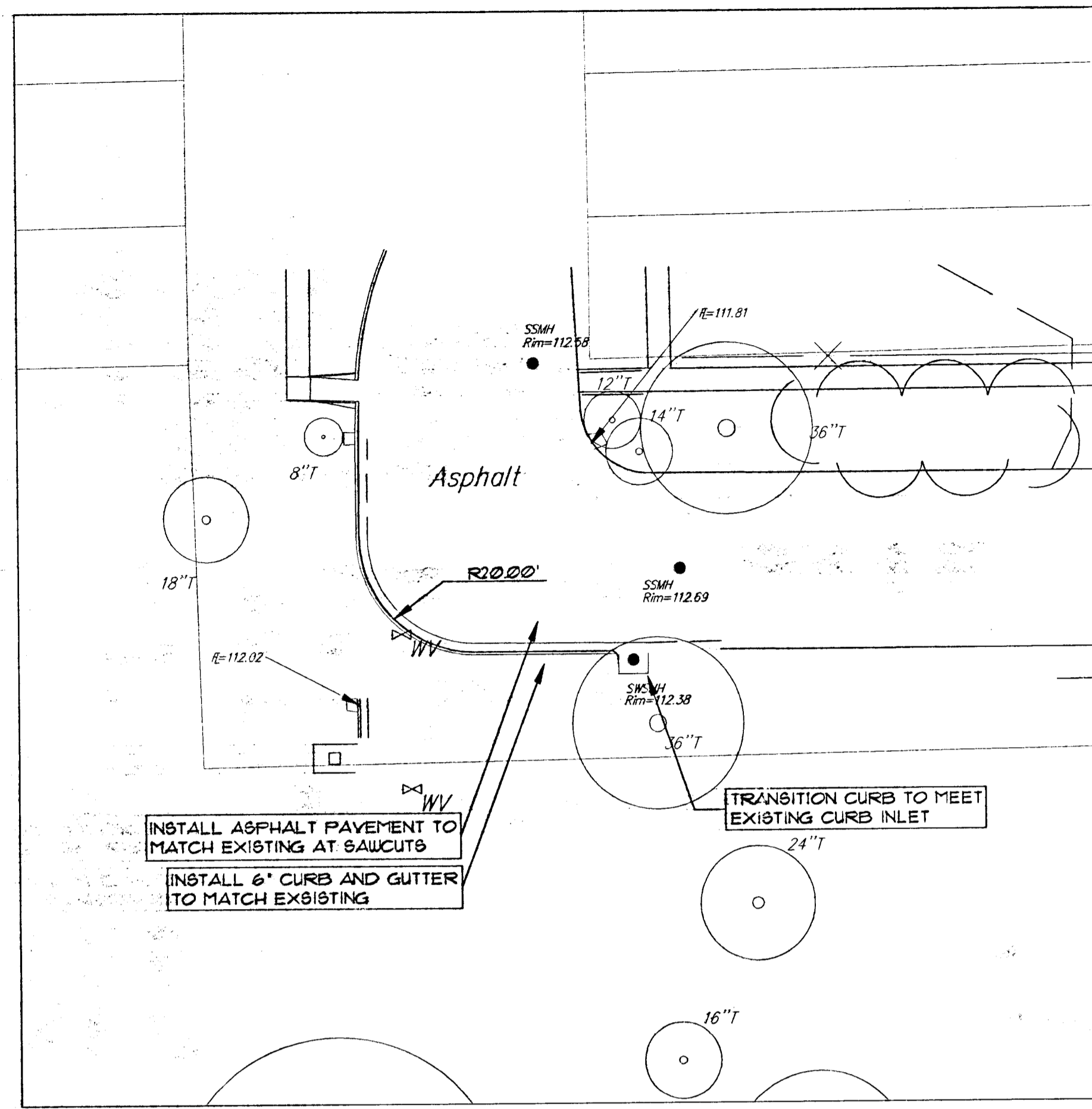
PARK VILLA

PRINTS ISSUED
MAY 3, 2002 - 50% REVIEW
JULY 1, 2002 - 85% REVIEW
SEPTEMBER 6, 2002 - FOR BID

WDM No. 00113 drcw: BDI/KDM
checked: PJM/NBW

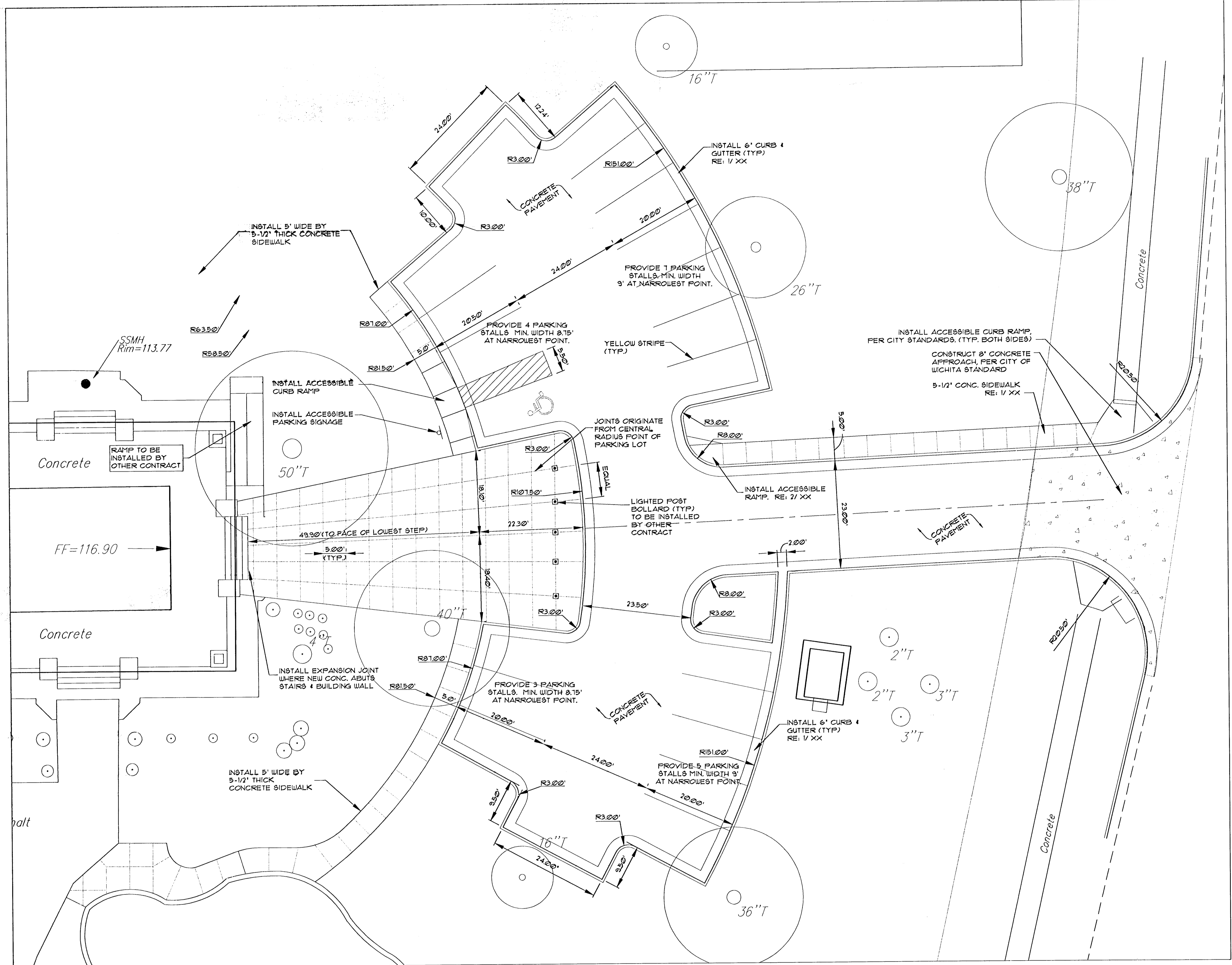
Park Villa Pond & Parking Layout

SECTION ONE
5 of 6



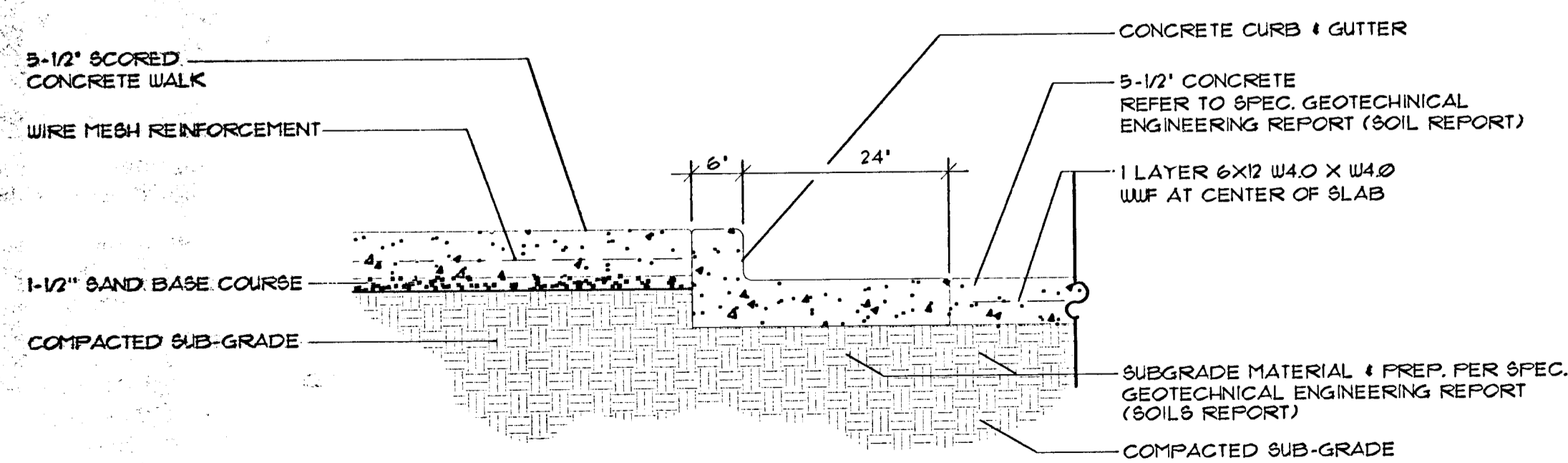
PARK VILLA STREET
REMOVAL LAYOUT

SCALE: 1" = 20'-0"



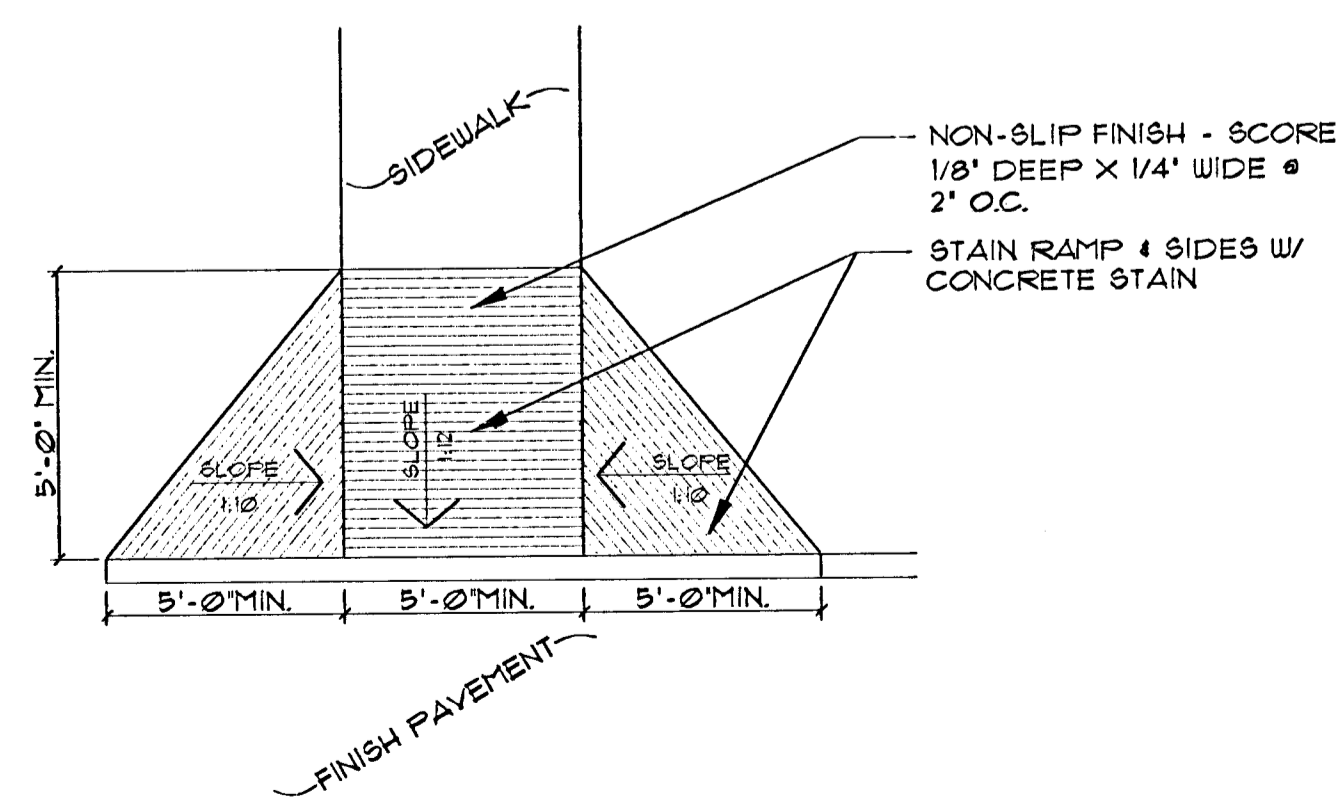
PARK VILLA PARKING LOT LAYOUT

SCALE: 1" = 10'-0"



1 CONCRETE CURB AND SIDEWALK

SCALE 3/4" = 1' - 0"



2 CURB RAMP

1/4" = 1' - 0"

NOTE:
LIGHTING AND IRRIGATION SYSTEMS SHALL BE INSTALLED AT A LATER TIME AS PART OF THE RIVERSIDE PARK IMPROVEMENT PROJECT.
AS PART OF THE PAVEMENT CONTRACT, 4-INCH SLEEVES SHALL BE INSTALLED TO ACCOMMODATE FUTURE INSTALLATION OF THESE SYSTEMS. ALL SLEEVES SHALL BE 4-INCH SCH 40 PVC PIPE.