

BENCHMARKS:

BM #1: "X" on the West End of the Steel Casing Pipe at the Railroad Crossing South of 37th Street North Sta. 25+90, 41' Rt. Elev. = 1336.58 MSL

BM #2: Steel T-Post Driven 4' Deep Sta. 18+00, 25' Rt. Elev. = 1337.73 MSL

BM #3: "□" in the Concrete Footing of the SBC Pedestal in the South West Corner of 37th Street North and Tyler Road Sta. 8+56, 95' Rt. Elev. = 1342.17 MSL

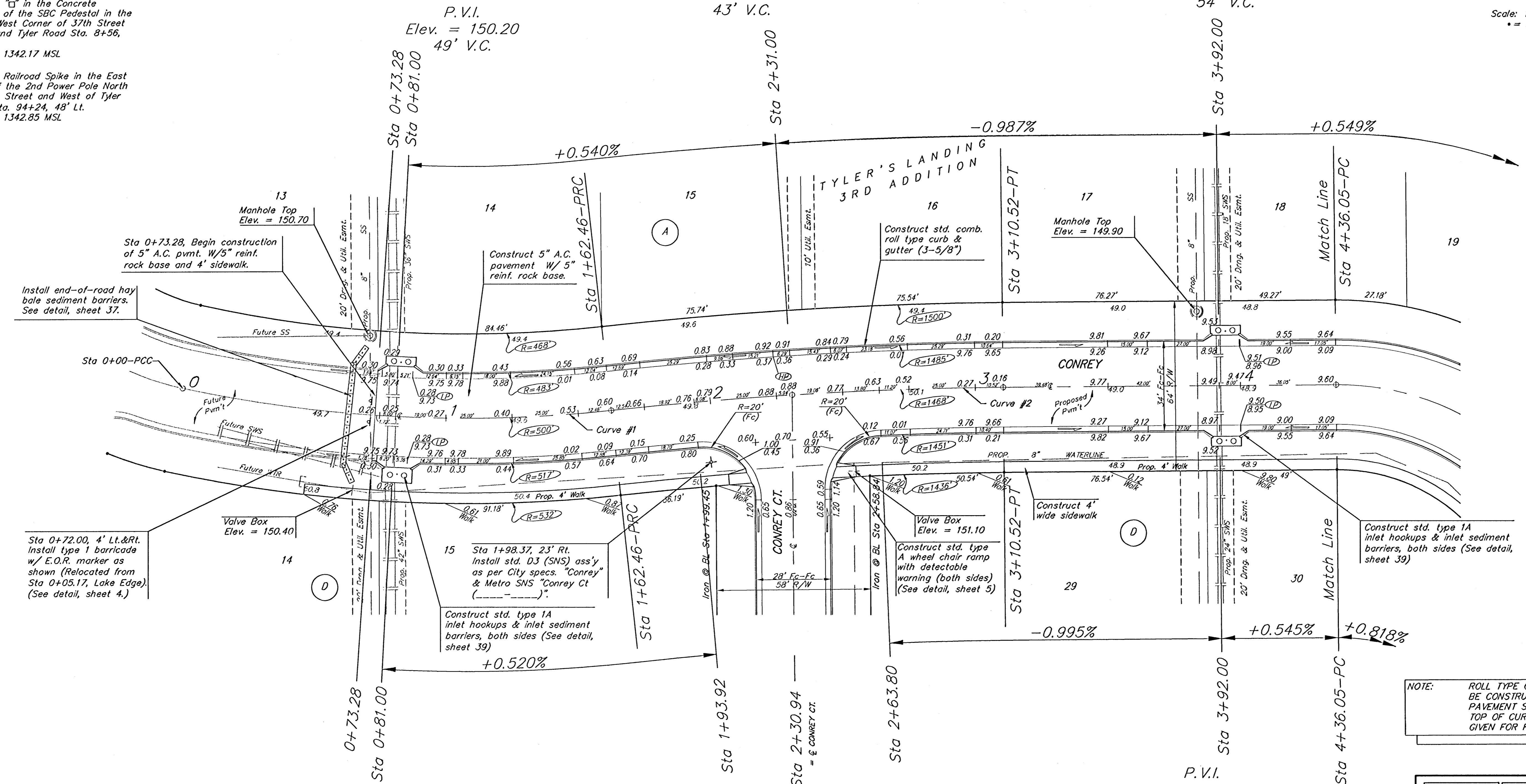
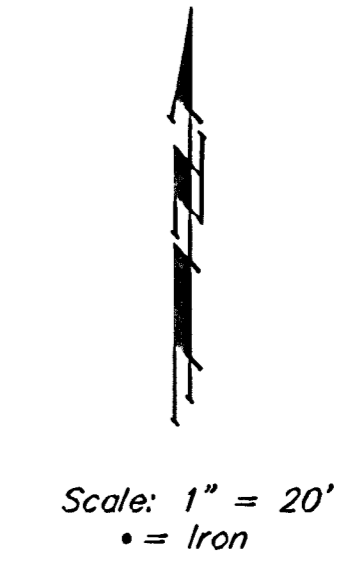
BM #4: Railroad Spike in the East Face of the 2nd Power Pole North of 37th Street and West of Tyler Road Sta. 94+24, 48' Lt. Elev. = 1342.85 MSL

Curve #1
Curve Data Based on Centerline
Rad. = 500' Delta = 18°37'1" Tangent = 81.95'
Arc = 162.46' L.C. = 161.75' Del/Ft. = 3.43782 Min.

Station	Arc	FACE CHORD LENGTHS		Defl.	T. Defl.
		8' Lt.	8' Rt.		
0+00.00	-	-	-	0°00'00"	0°00'00"
0+25.00	25.00'	26.25'	23.75'	1°25'57"	1°25'57"
0+50.00	25.00'	26.25'	23.75'	1°25'57"	2°51'53"
0+75.00	25.00'	26.25'	23.75'	1°25'57"	4°17'50"
0+81.00	6.00'	6.30'	5.70'	0°20'58"	4°38'28"
1+00.00	19.00'	19.95'	18.05'	1°05'19"	5°43'47"
1+25.00	25.00'	26.25'	23.75'	1°25'57"	7°09'44"
1+50.00	25.00'	26.25'	23.75'	1°25'57"	8°35'40"
1+62.46	12.46'	13.08'	11.84'	0°42'50"	9°18'31"

Curve #2
Curve Data Based on Centerline
Rad. = 1468' Delta = 5°46'42" Tangent = 74.09'
Arc = 148.06' L.C. = 147.99' Del/Ft. = 1.17081 Min.

Station	Arc	FACE CHORD LENGTHS		Defl.	T. Defl.
		8' Lt.	8' Rt.		
1+62.46	-	-	-	0°00'00"	0°00'00"
1+75.00	12.54'	12.75'	12.33'	0°14'41"	0°14'41"
1+93.92	18.92'	19.24'	18.60'	0°22'09"	0°36'50"
2+30.94	37.02'	37.65'	36.39'	0°43'20"	1°20'10"
2+63.80	32.86'	33.42'	32.30'	0°38'29"	1°58'39"
2+75.00	11.20'	11.39'	11.01'	0°13'07"	2°11'46"
3+00.00	25.00'	25.42'	24.57'	0°29'16"	2°41'02"
3+10.52	10.52'	10.70'	10.34'	0°12'19"	2°53'21"



P.V.I.
Elev. = 150.20
49' V.C.

P.V.I.
Elev. = 151.00
43' V.C.

P.V.I.
Elev. = 149.40
54' V.C.

P.V.I.
Elev. = 150.20
49' V.C.

P.V.I.
Elev. = 149.40
54' V.C.

P.V.I.
Elev. = 149.64
No V.C.

NOTE: ROLL TYPE CURB & GUTTER TO BE CONSTRUCTED ON THE PAVEMENT SHOWN ON THIS SHEET. TOP OF CURB ELEVATIONS ARE GIVEN FOR FULL HEIGHT CURB.

Adjust water valve boxes as needed to grade. Incidental to 'Site Clearing and Restoration'.

Contractor to remove existing trees, fence, etc. as needed to complete paving project. Removal shall be incidental to bid item 'Site Clearing and Restoration'.

Baughman		Tyler's Landing 3rd Addition - Phase I	
		Conrey	
		STA 0+50.00 TO STA 4+36.05	
Baughman Company, P.A. 315 Ella St. Wichita, KS 67211 F 316-263-0149			
ENGINEERING SURVEYING PLANNING LANDSCAPE ARCHITECTURE			
PROJECT NUMBER 472-84162	DESIGN AEG	DRAWN JWH/TMS	DATE 08/05
APPROVED	DATE	SCALE Noted	
REVISIONS		SHEET	
		6 OF 52	
tylers landing 3rd part.dwg		05-07-E283	