

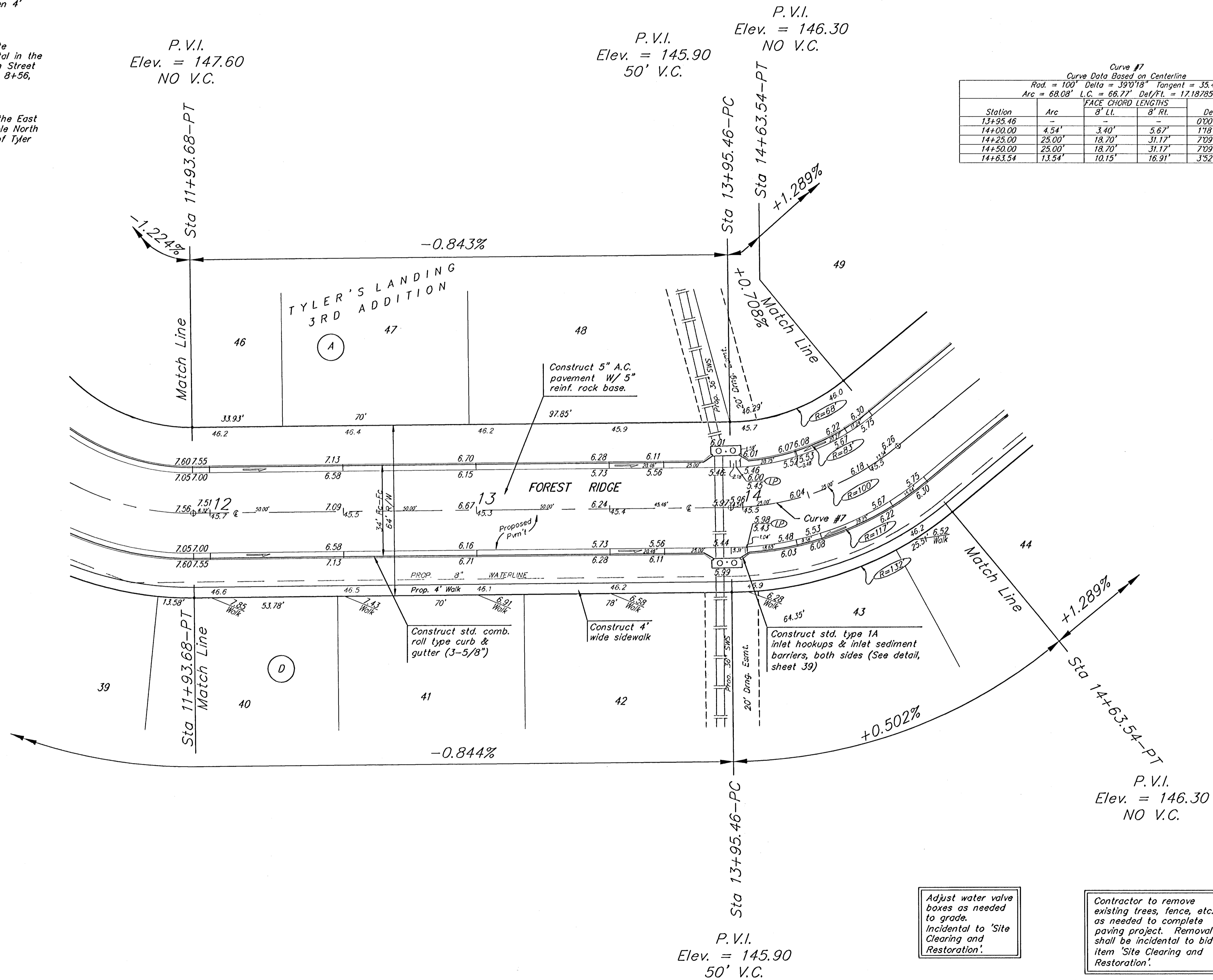
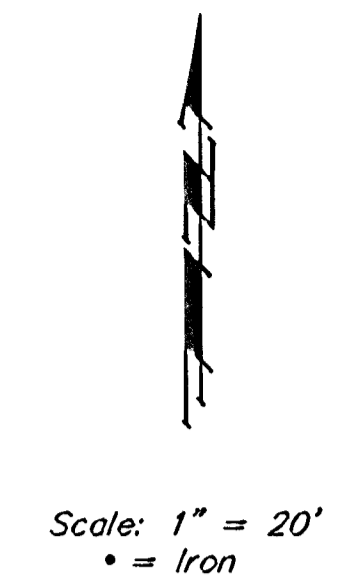
**BENCHMARKS:**

BM #1: "X" on the West End of the Steel Casing Pipe at the Railroad Crossing South of 37th Street North Sta. 25+90, 41' Rt. Elev. = 1336.58 MSL

BM #2: Steel T-Post Driven 4' Deep Sta. 18+00, 25' Rt. Elev. = 1337.73 MSL

BM #3: "□" in the Concrete Footing of the SBC Pedestal in the South West Corner of 37th Street North and Tyler Road Sta. 8+56, 95' Rt. Elev. = 1342.17 MSL

BM #4: Railroad Spike in the East Face of the 2nd Power Pole North of 37th Street and West of Tyler Road Sta. 94+24, 48' Lt. Elev. = 1342.85 MSL



Curve #7  
Curve Data Based on Centerline  
Rad. = 100' Delta = 39°18' Tangent = 35.42'  
Arc = 68.08' L.C. = 66.77' Del/Ft. = 17.18785 Min.

Station	Arc	FACE CHORD LENGTHS		Delt.	T. Delt.
		8' Lt.	8' Rt.		
13+95.46	-	-	-	0°00'00"	0°00'00"
14+00.00	4.54'	3.40'	5.67'	1°18'02"	1°18'02"
14+25.00	25.00'	18.70'	31.17'	7°09'42"	8°27'44"
14+50.00	25.00'	18.70'	31.17'	7°09'42"	15°37'26"
14+63.54	13.54'	10.15'	16.91'	3°52'43"	19°30'09"

NOTE: ROLL TYPE CURB & GUTTER TO BE CONSTRUCTED ON THE PAVEMENT SHOWN ON THIS SHEET. TOP OF CURB ELEVATIONS ARE GIVEN FOR FULL HEIGHT CURB.

Adjust water valve boxes as needed to grade. Incidental to 'Site Clearing and Restoration'.

Contractor to remove existing trees, fence, etc. as needed to complete paving project. Removal shall be incidental to bid item 'Site Clearing and Restoration'.

Tyler's Landing 3rd Addition - Phase I  
**Forest Ridge**  
STA 11+93.68 TO STA 14+63.54

Baughman  
Baughman Company, P.A. 115 11th St. W. York, PA 17403-1711 F 717-833-7271 F 717-833-0149  
ENGINEERING | SURVEYING | PLANNING | LANDSCAPE ARCHITECTURE

PROJECT NUMBER 472-84262	DESIGN AEG	DRAWN JWH/TMS
REVISIONS:	APPROVED	DATE 08/05
	SCALE Noted	SHEET <b>9 OF 52</b>

tylers landing 3rd.vst1.dwg 05-07-E283