

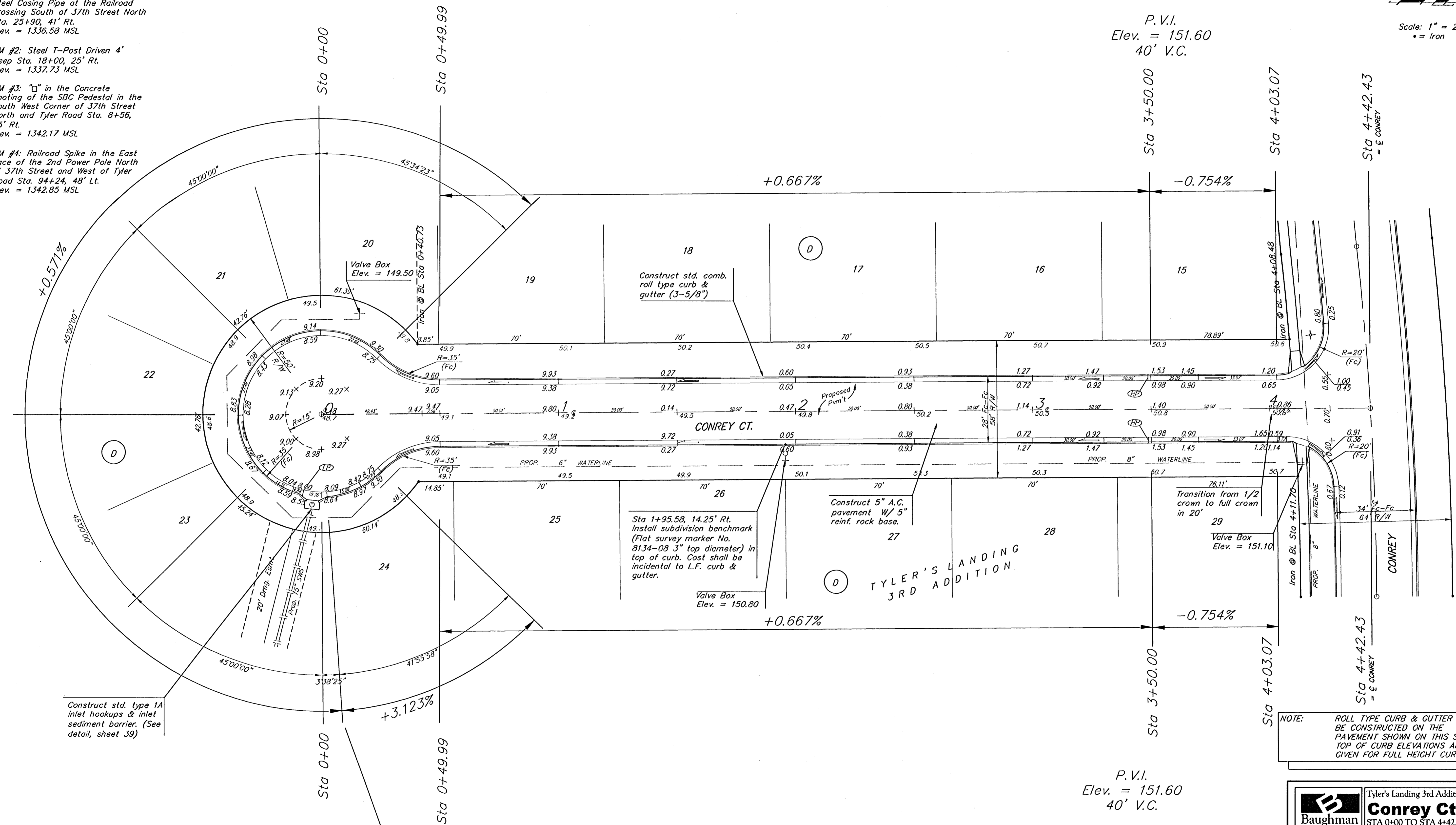
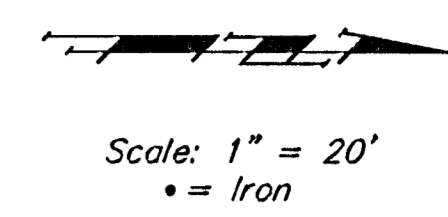
**BENCHMARKS:**

BM #1: "X" on the West End of the Steel Casing Pipe at the Railroad Crossing South of 37th Street North Sta. 25+90, 41' Rt. Elev. = 1336.58 MSL

BM #2: Steel T-Post Driven 4' Deep Sta. 18+00, 25' Rt. Elev. = 1337.73 MSL

BM #3: "□" in the Concrete Footing of the SBC Pedestal in the South West Corner of 37th Street North and Tyler Road Sta. 8+56, 95' Rt. Elev. = 1342.17 MSL

BM #4: Railroad Spike in the East Face of the 2nd Power Pole North of 37th Street and West of Tyler Road Sta. 94+24, 48' Lt. Elev. = 1342.85 MSL



Construct std. type 1A inlet hookups & inlet sediment barrier. (See detail, sheet 39)

P.V.I. Elev. = 148.50  
30' V.C.

Adjust water valve boxes as needed to grade. Incidental to 'Site Clearing and Restoration'.

Contractor to remove existing trees, fence, etc. as needed to complete paving project. Removal shall be incidental to bid item 'Site Clearing and Restoration'.

P.V.I. Elev. = 151.60  
40' V.C.

NOTE: ROLL TYPE CURB & GUTTER TO BE CONSTRUCTED ON THE PAVEMENT SHOWN ON THIS SHEET. TOP OF CURB ELEVATIONS ARE GIVEN FOR FULL HEIGHT CURB.

<b>Baughman</b>		Tyler's Landing 3rd Addition - Phase I	
<b>Conrey Ct.</b>		STA 0+00 TO STA 4+42.43	
Baughman Company, P.A. 315 Ellis St. Wichita, KS 67211 P 316.262.2211 F 316.262.0149 ENGINEERING   SURVEYING   PLANNING   LANDSCAPE ARCHITECTURE			
PROJECT NUMBER 472-24262	DESIGN AEG	DRAWN JWH/TMS	DATE 08/05
REVISIONS:	APPROVED	SCALE Noted	SHEET
			<b>11 OF 52</b>
tylers landing 3rd part.dwg		0507-E283	