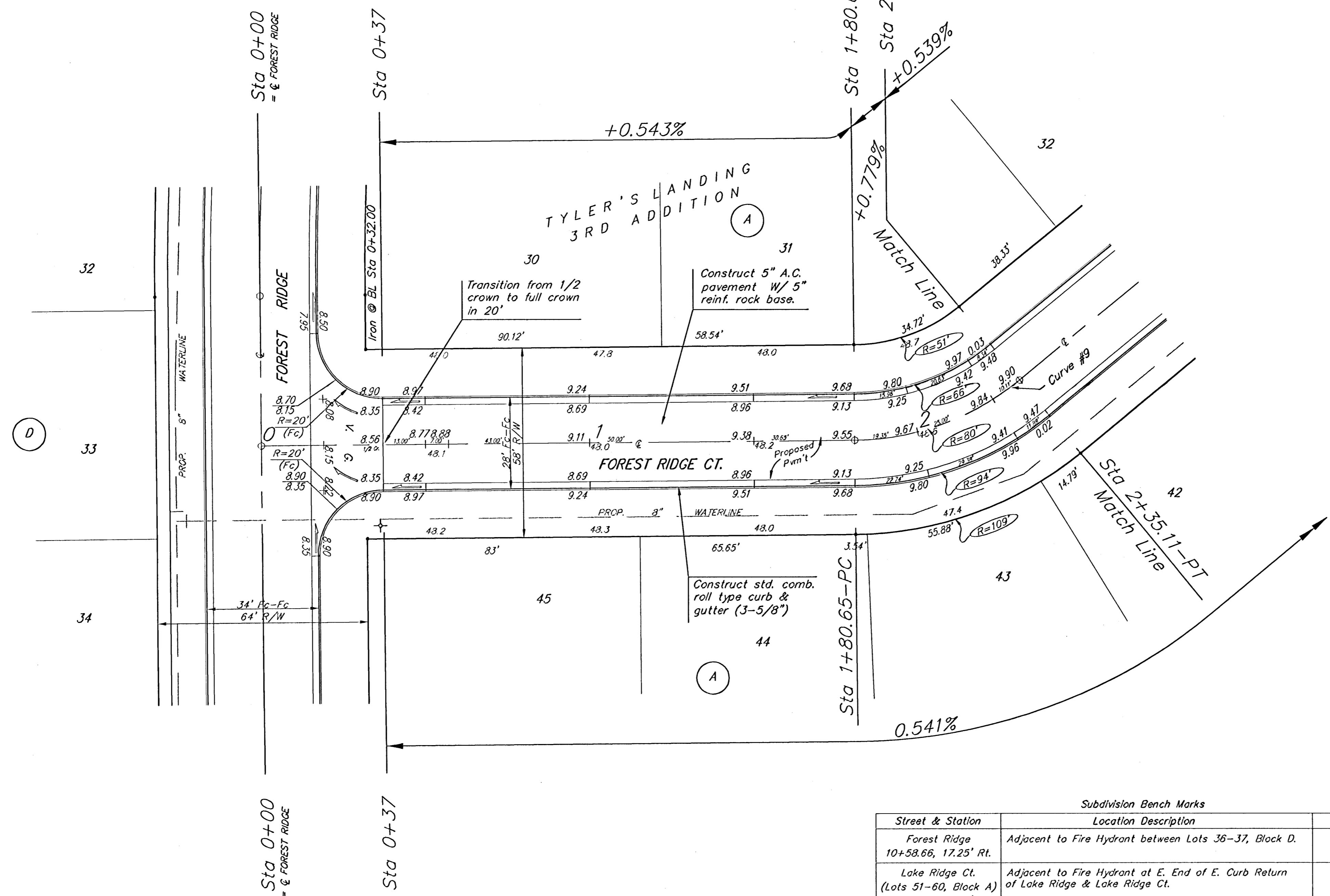
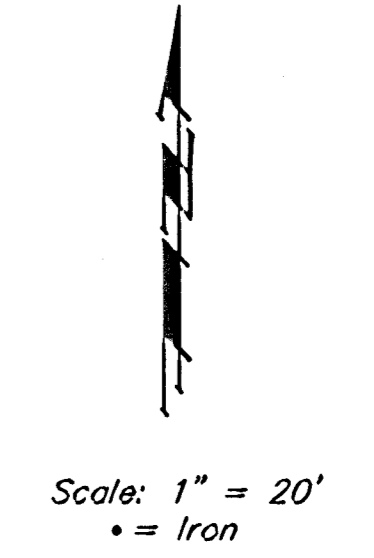


**BENCHMARKS:**  
 BM #1: "X" on the West End of the Steel Casing Pipe at the Railroad Crossing South of 37th Street North Sta. 25+90, 41' Rt. Elev. = 1336.58 MSL  
 BM #2: Steel T-Post Driven 4' Deep Sta. 18+00, 25' Rt. Elev. = 1337.73 MSL  
 BM #3: "□" in the Concrete Footing of the SBC Pedestal in the South West Corner of 37th Street North and Tyler Road Sta. 8+56, 95' Rt. Elev. = 1342.17 MSL  
 BM #4: Railroad Spike in the East Face of the 2nd Power Pole North of 37th Street and West of Tyler Road Sta. 94+24, 48' Lt. Elev. = 1342.85 MSL

Curve #9  
 Curve Data Based on Centerline  
 Rad. = 80' Delta = 39°18' Tangent = 28.33'  
 Arc = 54.46' L.C. = 53.42' Def/Fl. = 21.48641 Min.

Station	Arc	FACE CHORD LENGTHS		Defl.	T. Defl.
		8' Lt.	8' Rt.		
1+80.65	-	-	-	0°00'00"	0°00'00"
2+00.00	19.35'	13.99'	24.61'	6°55'46"	6°55'46"
2+25.00	25.00'	18.05'	31.75'	8°57'10"	15°52'55"
2+35.11	10.11'	7.33'	12.88'	3°37'14"	19°30'09"

P.V.I. Elev. = 149.68 NO V.C.  
 P.V.I. Elev. = 150.03 NO V.C.



Adjust water valve boxes as needed to grade. Incidental to 'Site Clearing and Restoration'.

Contractor to remove existing trees, fence, etc. as needed to complete paving project. Removal shall be incidental to bid item 'Site Clearing and Restoration'.

NOTE: ROLL TYPE CURB & GUTTER TO BE CONSTRUCTED ON THE PAVEMENT SHOWN ON THIS SHEET. TOP OF CURB ELEVATIONS ARE GIVEN FOR FULL HEIGHT CURB.

Subdivision Bench Marks		
Street & Station	Location Description	Elevation
Forest Ridge 10+58.66, 17.25' Rt.	Adjacent to Fire Hydrant between Lots 36-37, Block D.	
Lake Ridge Ct. (Lots 51-60, Block A) 15+84.07, 17.25' Rt.	Adjacent to Fire Hydrant at E. End of E. Curb Return of Lake Ridge & Lake Ridge Ct.	
Conroy Ct. 1+95.58, 14.25' Rt.	Adjacent to Fire Hydrant between Lots 26-27, Block D.	
Forest Ridge Ct. (Lots 20-29, Block A) 0+33.00, 14.25' Rt.	Adjacent to Fire Hydrant at E. End of S.E. Curb Return of Forest Ridge & Forest Ridge Ct.	
Forest Ridge Ct. (Lots 30-45, Block A) 3+56.98, 14.25' Rt.	Adjacent to Fire Hydrant between Lots 40-41, Block A.	

**Baughman** Tyler's Landing 3rd Addition - Phase I  
**Forest Ridge Ct.**  
 STA 0+00 TO STA 2+35.11

Baughman Company, P.A. 315 Ellis St. Wichita, KS 67211 P 316263 7271 F 316262 6149  
 ENGINEERING | SURVEYING | PLANNING | LANDSCAPE ARCHITECTURE

PROJECT NUMBER 472-84262	DESIGN AEO	DRAWN JWH/TMS
REVISIONS	APPROVED	DATE 08/05
	SCALE Noted	SHEET <b>13 OF 52</b>

tylers landing 3rd add.dwg 05-07-2003