

**BENCHMARKS:**

BM #1: "X" on the West End of the Steel Casing Pipe at the Railroad Crossing South of 37th Street North Sta. 25+90, 41' Rt. Elev. = 1336.58 MSL

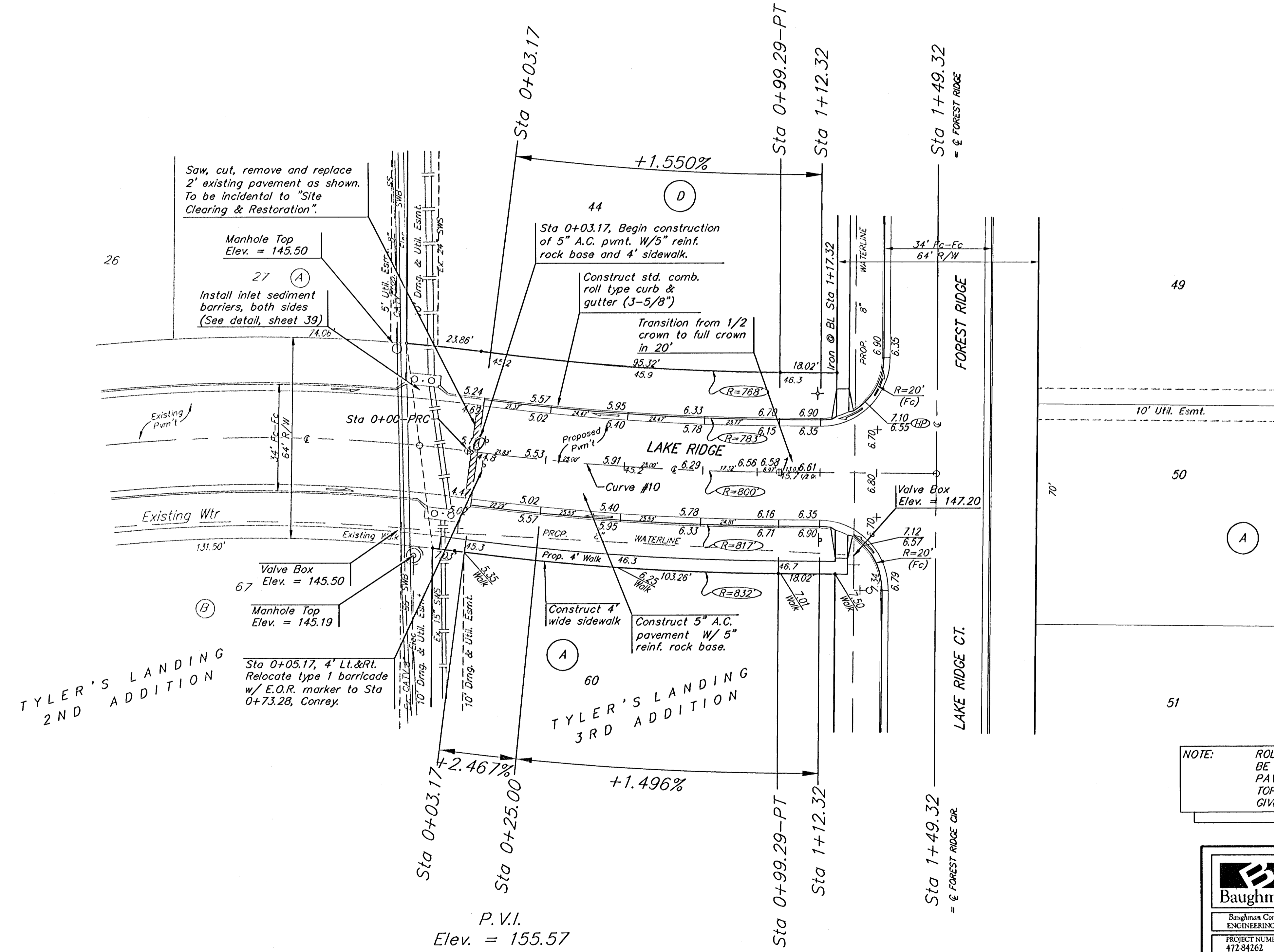
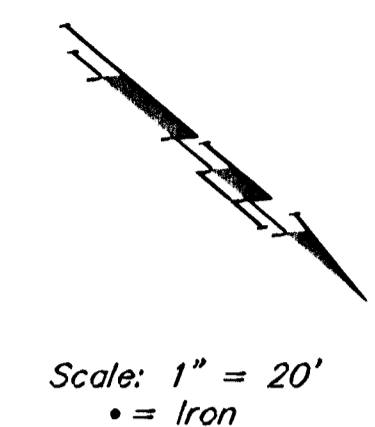
BM #2: Steel T-Post Driven 4' Deep Sta. 18+00, 25' Rt. Elev. = 1337.73 MSL

BM #3: "□" in the Concrete Footing of the SBC Pedestal in the South West Corner of 37th Street North and Tyler Road Sta. 8+56, 95' Rt. Elev. = 1342.17 MSL

BM #4: Railroad Spike in the East Face of the 2nd Power Pole North of 37th Street and West of Tyler Road Sta. 94+24, 48' Lt. Elev. = 1342.85 MSL

Curve #10  
Curve Data Based on Centerline  
Rad. = 800' Delta = 706° 40' Tangent = 49.71'  
Arc = 99.29' L.C. = 99.23' Def/Ft = 2.14859 Min.

Station	Arc	FACE CHORD LENGTHS		Defl.	T. Defl.
		8' Lt.	8' Rt.		
0+00.00	-	-	-	0'00'00"	0'00'00"
0+03.17	3.17'	3.07'	3.27'	0'06'48"	0'06'48"
0+25.00	21.83'	21.15'	22.51'	0'46'54"	0'53'43"
0+50.00	25.00'	24.22'	25.78'	0'53'43"	1'47'26"
0+75.00	25.00'	24.22'	25.78'	0'53'43"	2'41'08"
0+99.29	24.29'	23.53'	25.05'	0'52'11"	3'33'20"



NOTE: ROLL TYPE CURB & GUTTER TO BE CONSTRUCTED ON THE PAVEMENT SHOWN ON THIS SHEET. TOP OF CURB ELEVATIONS ARE GIVEN FOR FULL HEIGHT CURB.

Adjust water valve boxes as needed to grade. Incidental to 'Site Clearing and Restoration'.

Contractor to remove existing trees, fence, etc. as needed to complete paving project. Removal shall be incidental to bid item 'Site Clearing and Restoration'.

P.V.I.  
Elev. = 155.57  
No V.C.

		Tyler's Landing 3rd Addition - Phase I <b>Lake Ridge</b> STA 0+03.17 TO STA 1+49.32	
Baughman Company, P.A. 313 E. 8th St. Wichita, KS 67211 F 316.263.7271 F 316.263.0149 ENGINEERING   SURVEYING   PLANNING   LANDSCAPE ARCHITECTURE			
PROJECT NUMBER 412-84262	DESIGN AEG	DRAWN JWH/TMS	DATE 08/05
REVISIONS	APPROVED	SCALE Noted	SHEET <b>15 OF 52</b>
tyler's landing 3rd.pdf.dwg		05-07-E283	