

BENCHMARKS:

BM #1: "X" on the West End of the Steel Casing Pipe at the Railroad Crossing South of 37th Street North Sta. 25+90, 41' Rt. Elev. = 1336.58 MSL

BM #2: Steel T-Post Driven 4' Deep Sta. 18+00, 25' Rt. Elev. = 1337.73 MSL

BM #3: "□" in the Concrete Footing of the SBC Pedestal in the South West Corner of 37th Street North and Tyler Road Sta. 8+56, 95' Rt. Elev. = 1342.17 MSL

BM #4: Railroad Spike in the East Face of the 2nd Power Pole North of 37th Street and West of Tyler Road Sta. 94+24, 48' Lt. Elev. = 1342.85 MSL

Pond data:
Static ws elev. = 137.2
100-yr ws elev. is
Variable along reach

Scale: 1" = 20' Horizontal
1" = 5' Vertical
• = Iron

TYLER'S LANDING
2ND ADDITION

Res. "A"

Sta 0+15.0, Begin Line 1
Begin construction of 36" RCP.
1 - 36" RC Headwall
27.0 S.Y. light stone rip-rap.

CAUTION! Ex. Irrigation Line Crossing.
Depth unknown. Contractor shall
remove/replace/repair/adjust irrigation
line and sprinkler heads as necessary
for construction. Cost to be included in
"Site Clearing & Restoration."

CAUTION!
8" Encased SS
Crossing

CAUTION!
8" Wtr
Crossing

Sta 1+81.6 to Sta 2+23.0
Install 41.4 L.F. flowable fill
per City specs.

Sta 1+81.6, Line 1
Construct std. type 1A
inlet (10"x3').
Top Elev. = 145.98

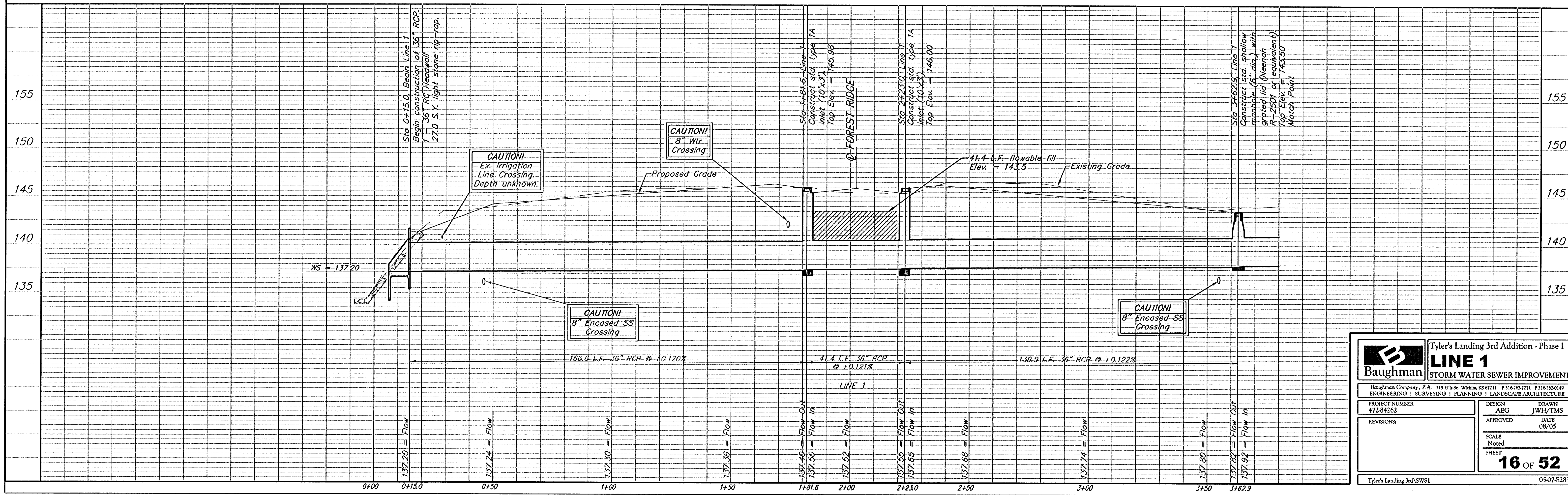
Sta 2+23.0, Line 1
Construct std. type 1A
inlet (10"x3').
Top Elev. = 146.00

CAUTION!
8" Encased SS
Crossing

Sta 3+62.9, Line 1
Construct std. shallow
manhole (6" dia.) with
grated lid (Neenah
R-2501 or equivalent).
Top Elev. = 143.50
Match Point

Install hay bale
sediment barrier per
detail, sheet 37.

TYLER'S LANDING 3RD
ADDITION



		Tyler's Landing 3rd Addition - Phase I	
LINE 1 STORM WATER SEWER IMPROVEMENTS			
<small>Baughman Company, P.A. 315 E. St. Wichita, KS 67211 P 316-263-7771 F 316-263-0149 ENGINEERING SURVEYING PLANNING LANDSCAPE ARCHITECTURE</small>			
PROJECT NUMBER 472-84262	DESIGN AEG	DRAWN JWH/TMS	APPROVED DATE 08/05
REVISIONS:	SCALE Noted	SHEET 16 OF 52	
Tyler's Landing 3rd SWSI		05-07-E283	