

BENCHMARKS:

BM #1: "X" on the West End of the Steel Casing Pipe at the Railroad Crossing South of 37th Street North Sta. 25+90, 41' Rt. Elev. = 1336.58 MSL

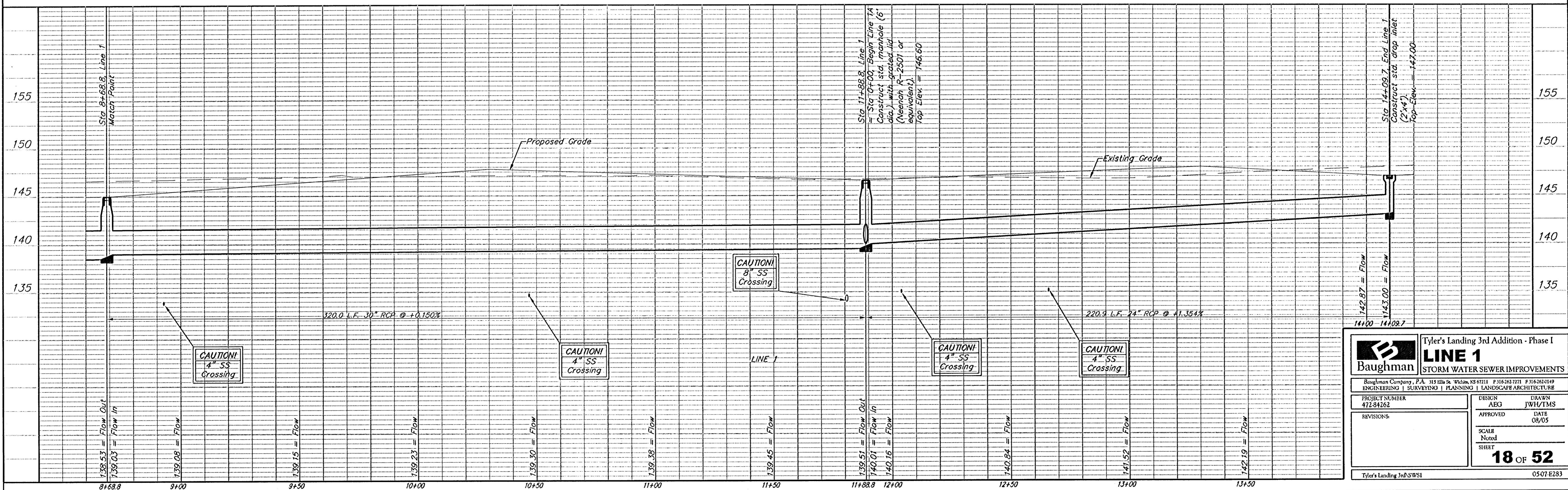
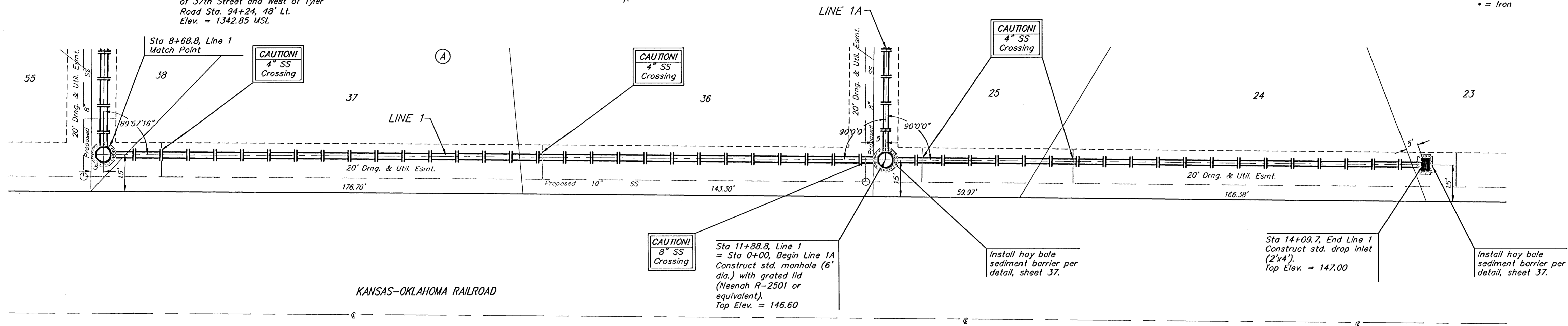
BM #2: Steel T-Post Driven 4' Deep Sta. 18+00, 25' Rt. Elev. = 1337.73 MSL

BM #3: "O" in the Concrete Footing of the SBC Pedestal in the South West Corner of 37th Street North and Tyler Road Sta. 8+56, 95' Rt. Elev. = 1342.17 MSL

BM #4: Railroad Spike in the East Face of the 2nd Power Pole North of 37th Street and West of Tyler Road Sta. 94+24, 48' Lt. Elev. = 1342.85 MSL

TYLER'S LANDING 3RD ADDITION

Scale: 1" = 20' Horizontal
1" = 5' Vertical
• = Iron



Baughman Tyler's Landing 3rd Addition - Phase I
LINE 1
STORM WATER SEWER IMPROVEMENTS

Baughman Company, P.A. 315 Ellis St. Wichita, KS 67211 P 316.262.7771 F 316.262.4149
ENGINEERING | SURVEYING | PLANNING | LANDSCAPE ARCHITECTURE

PROJECT NUMBER: 472-84262
DESIGN: AEG
DRAWN: JWH/TMS
APPROVED: [Signature] DATE: 08/05

SCALE: Noted
SHEET: 18 OF 52

Tyler's Landing 3rd SWSI 0507 E283