

BENCHMARKS:
 BM #1: "X" on the West End of the Steel Casing Pipe at the Railroad Crossing South of 37th Street North Sta. 25+90, 41' Rt. Elev. = 1336.58 MSL

BM #2: Steel T-Post Driven 4' Deep Sta. 18+00, 25' Rt. Elev. = 1337.73 MSL

BM #3: "□" in the Concrete Footing of the SBC Pedestal in the South West Corner of 37th Street North and Tyler Road Sta. 8+56, 95' Rt. Elev. = 1342.17 MSL

BM #4: Railroad Spike in the East Face of the 2nd Power Pole North of 37th Street and West of Tyler Road Sta. 94+24, 48' Lt. Elev. = 1342.85 MSL

Pond data:
 Static ws elev. = 137.2
 100-yr ws elev. is
 Variable along reach

CAUTION! Ex. Irrigation Line Crossing. Depth unknown. Contractor shall remove/replace/repair/adjust irrigation line and sprinkler heads as necessary for construction. Cost to be included in "Site Clearing & Restoration."

CAUTION! 4" SS Crossing

TYLER'S LANDING 3RD ADDITION

CAUTION! 4" SS Crossing

CAUTION! 4" SS Crossing

CAUTION! 4" SS Crossing

Scale: 1" = 20' Horizontal
 1" = 5' Vertical
 • = Iron

Sta 0+25.5, Begin Line 2
 Begin construction of 36" RCP.
 1 - 36" RC Headwall 27.0 S.Y.
 light stone rip-rap.

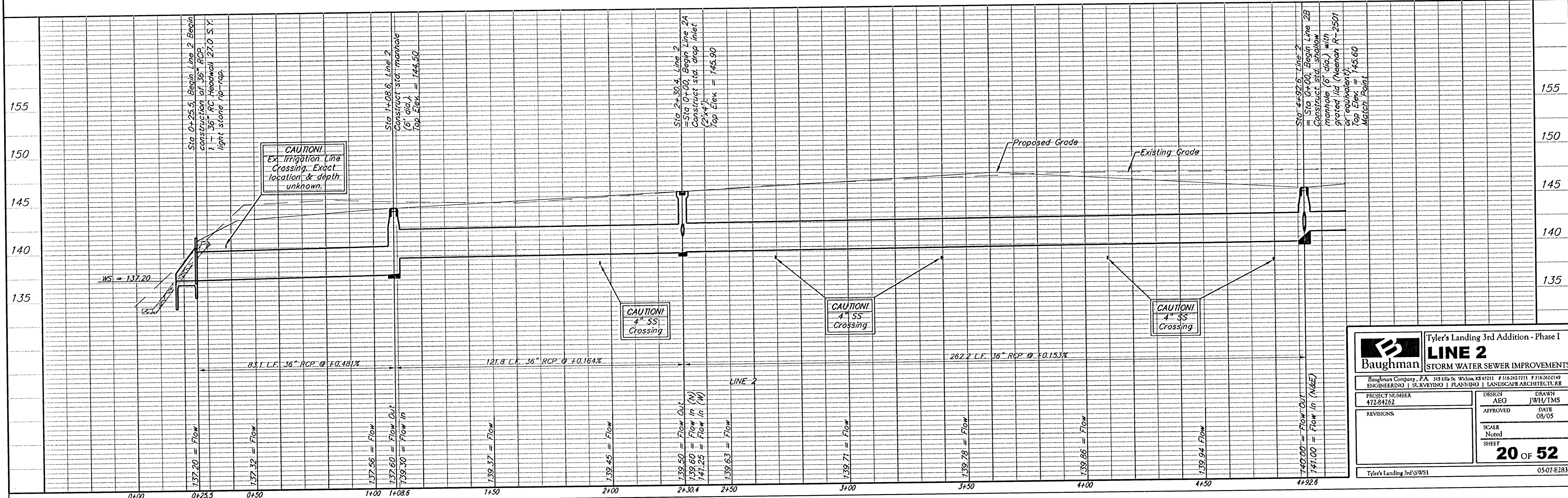
Sta 1+08.6, Line 2
 Construct std. shallow manhole (6' dia.)
 Top Elev. = 144.50

Sta 2+30.4, Line 2
 = Sta 0+00, Begin Line 2A
 Construct std. drop inlet (2'x4')
 Top Elev. = 145.90

Install hay bale sediment barrier per detail, sheet 37.

Sta 4+92.6, Line 2
 = Sta 0+00, Begin Line 2B
 Construct std. shallow manhole (6' dia.) with grated lid (Neenah R-2501 or equivalent).
 Top Elev. = 145.60
 Match Point

Install hay bale sediment barrier per detail, sheet 37.



		Tyler's Landing 3rd Addition - Phase I LINE 2 STORM WATER SEWER IMPROVEMENTS	
<small>Baughman Company, P.A. 315 Ellis St. Wichita, KS 67211 P 316.262.7211 F 316.262.0149 ENGINEERING SURVEYING PLANNING LANDSCAPE ARCHITECTURE</small>			
PROJECT NUMBER 472-84262	DESIGN ABO	DRAWN JWH/TMS	DATE 08/05
REVISIONS	APPROVED	SCALE Noted	SHEET 20 OF 52
Tyler's Landing 3rd SWS1		0507-E283	