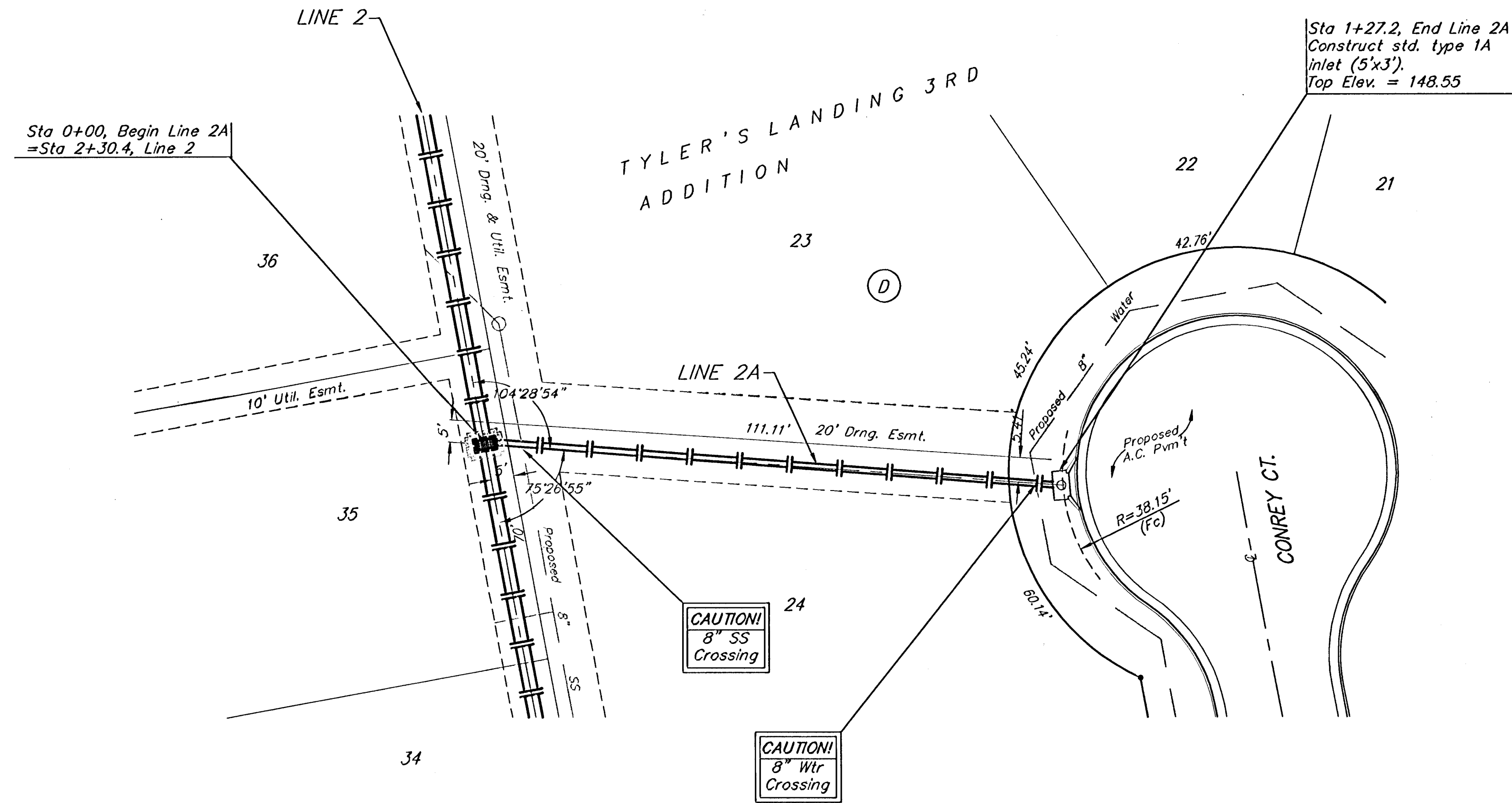
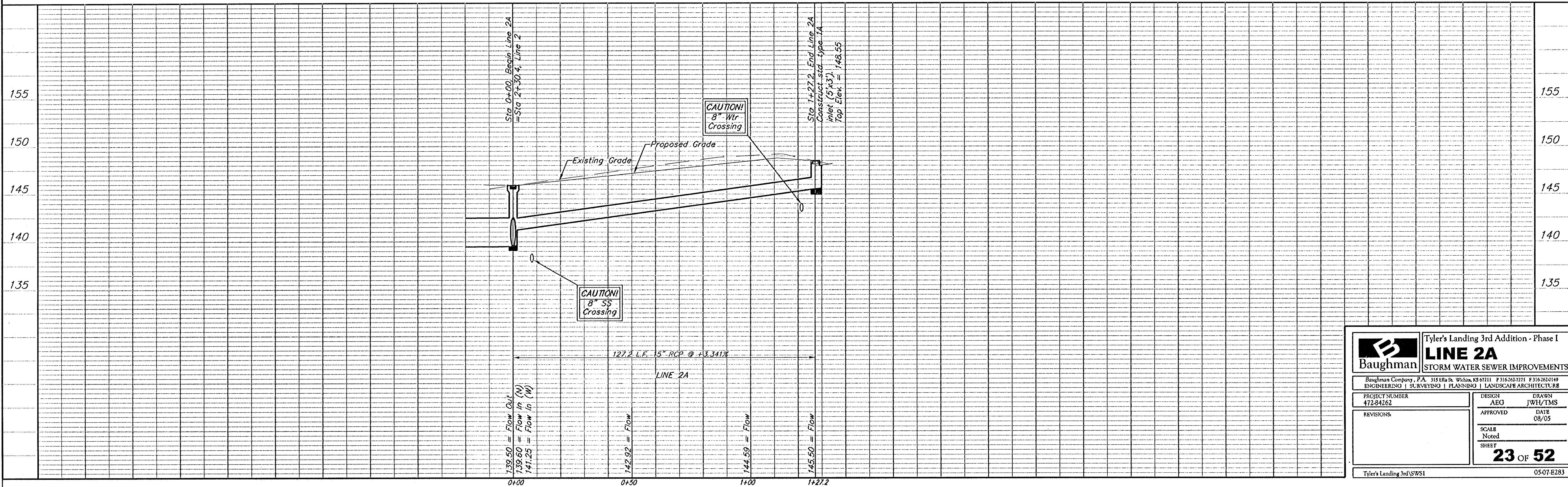


BENCHMARKS:
 BM #1: "X" on the West End of the Steel Casing Pipe at the Railroad Crossing South of 37th Street North Sta. 25+90, 41' Rt. Elev. = 1336.58 MSL
 BM #2: Steel T-Post Driven 4' Deep Sta. 18+00, 25' Rt. Elev. = 1337.73 MSL
 BM #3: "□" in the Concrete Footing of the SBC Pedestal in the South West Corner of 37th Street North and Tyler Road Sta. 8+56, 95' Rt. Elev. = 1342.17 MSL
 BM #4: Railroad Spike in the East Face of the 2nd Power Pole North of 37th Street and West of Tyler Road Sta. 94+24, 48' Lt. Elev. = 1342.85 MSL



Scale: 1" = 20' Horizontal
 1" = 5' Vertical
 • = Iron



		Tyler's Landing 3rd Addition - Phase I LINE 2A STORM WATER SEWER IMPROVEMENTS	
<small>Baughman Company, P.A. 315 Erie St. Wilkes-Barre, PA 18703-1011 P 717-263-7171 F 717-263-0149 ENGINEERING SURVEYING PLANNING LANDSCAPE ARCHITECTURE</small>			
PROJECT NUMBER 472-84262	DESIGN AEG	DRAWN JWH/TMS	DATE 08/05
REVISIONS:	APPROVED	SCALE Noted	SHEET 23 OF 52
<small>Tyler's Landing 3rd SWS1</small>		<small>05-07-E283</small>	