

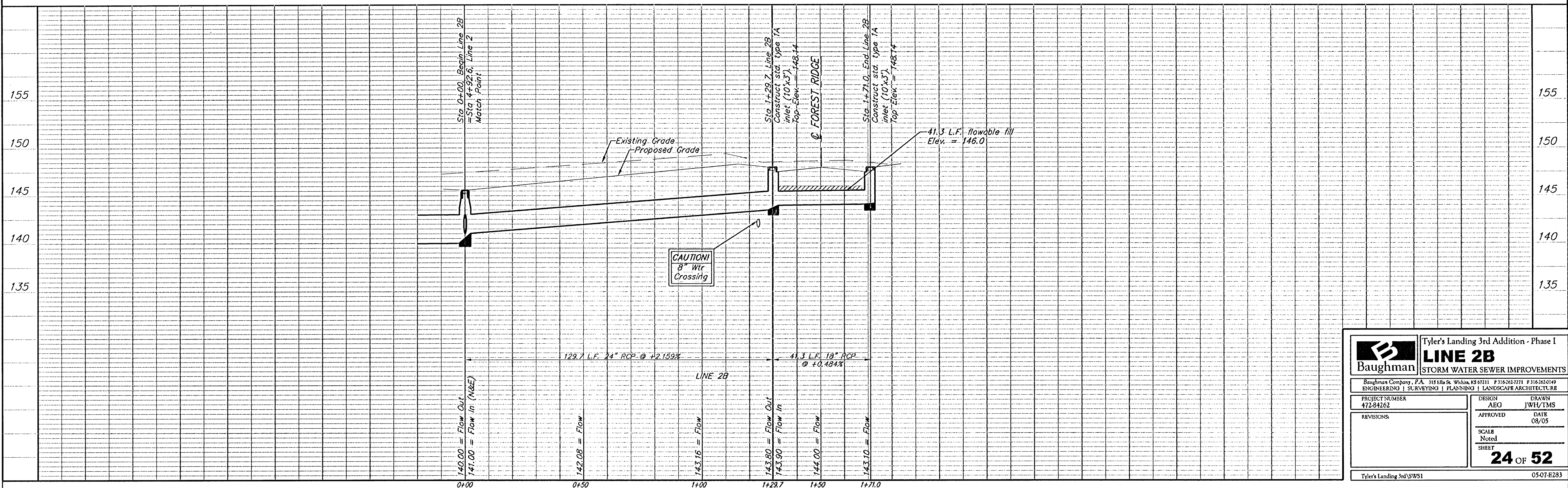
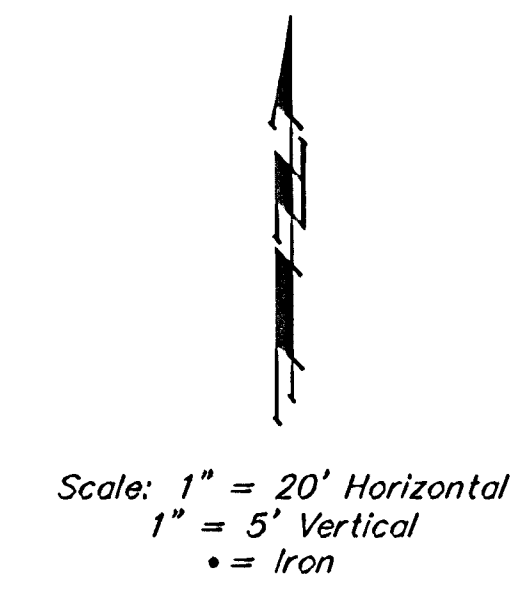
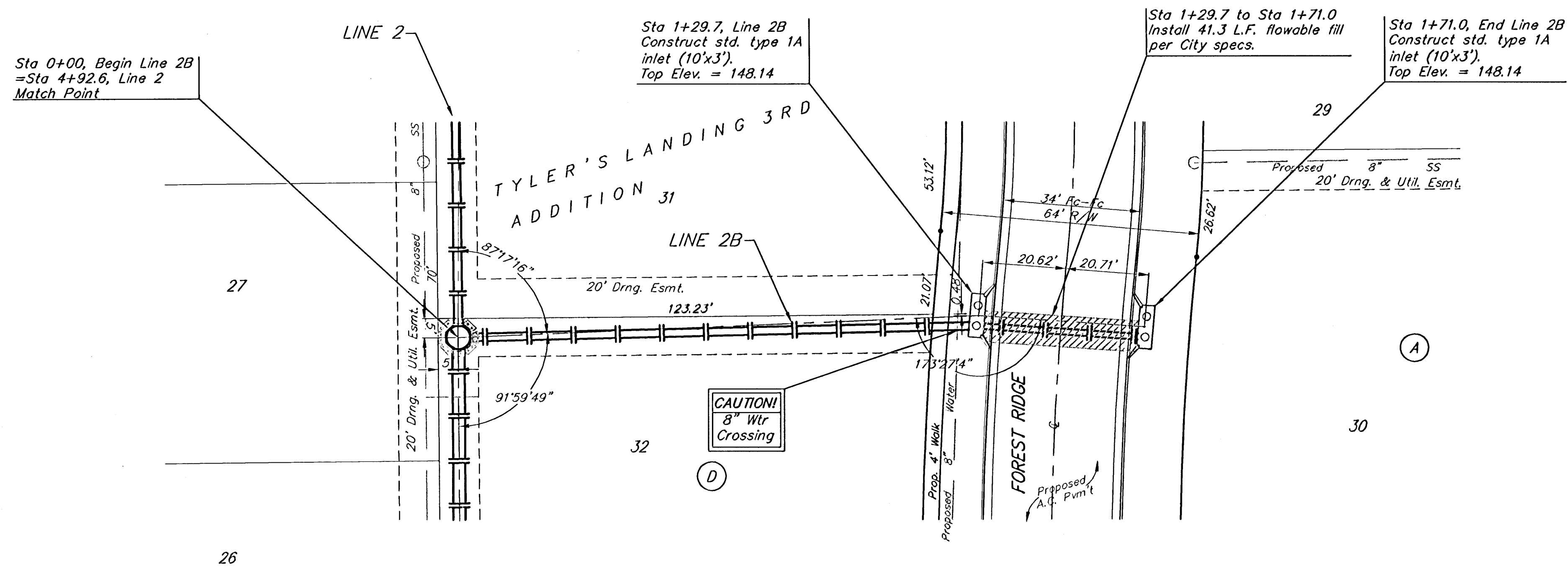
**BENCHMARKS:**

BM #1: "X" on the West End of the Steel Casing Pipe at the Railroad Crossing South of 37th Street North Sta. 25+90, 41' Rt. Elev. = 1336.58 MSL

BM #2: Steel T-Post Driven 4' Deep Sta. 18+00, 25' Rt. Elev. = 1337.73 MSL

BM #3: "□" in the Concrete Footing of the SBC Pedestal in the South West Corner of 37th Street North and Tyler Road Sta. 8+56, 95' Rt. Elev. = 1342.17 MSL

BM #4: Railroad Spike in the East Face of the 2nd Power Pole North of 37th Street and West of Tyler Road Sta. 94+24, 48' Lt. Elev. = 1342.85 MSL



		Tyler's Landing 3rd Addition - Phase I	
		<b>LINE 2B</b>	
STORM WATER SEWER IMPROVEMENTS		<small>Baughman Company, P.A. 315 11th St. W. W. Mo. KS 67111 F 316-263-7271 F 316-263-0149 ENGINEERING   SURVEYING   PLANNING   LANDSCAPE ARCHITECTURE</small>	
PROJECT NUMBER 472-84262	DESIGN AEG	DRAWN JWL/TMS	DATE 08/05
REVISIONS	APPROVED	SCALE Noted	SHEET
		<b>24 OF 52</b>	
Tyler's Landing 3rd SWS1		0507-E283	