

BENCHMARKS:

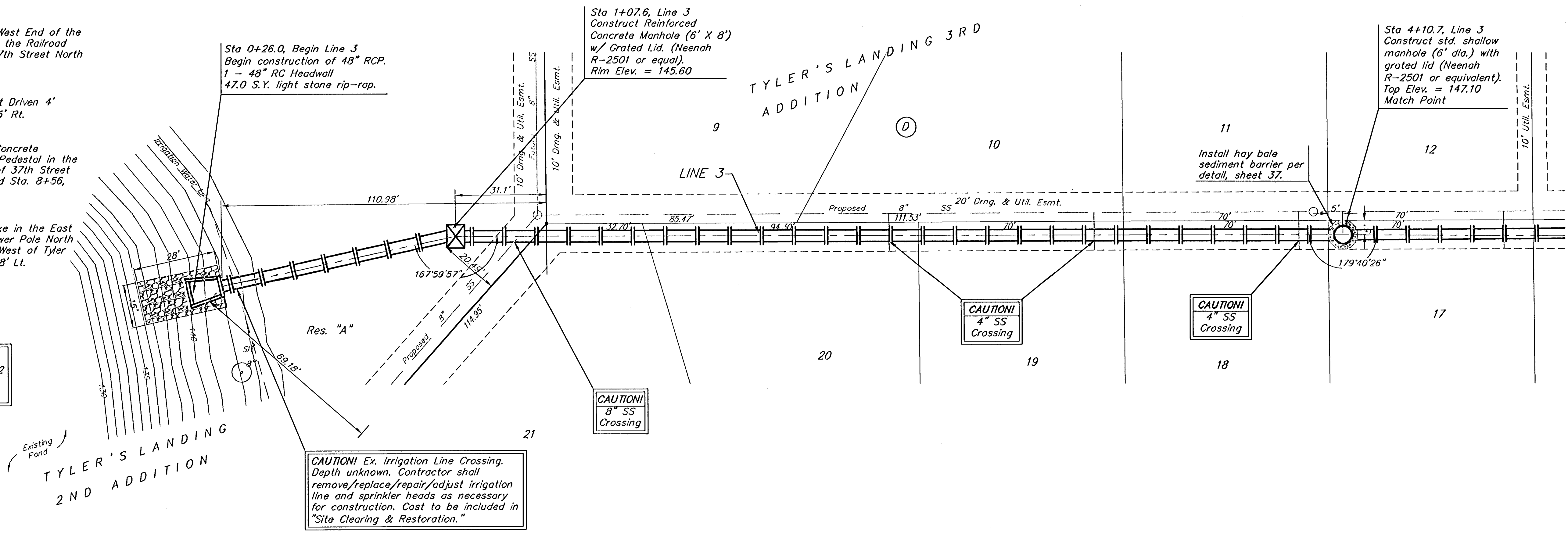
BM #1: "X" on the West End of the Steel Casing Pipe at the Railroad Crossing South of 37th Street North Sta. 25+90, 41' Rt. Elev. = 1336.58 MSL

BM #2: Steel T-Post Driven 4' Deep Sta. 18+00, 25' Rt. Elev. = 1337.73 MSL

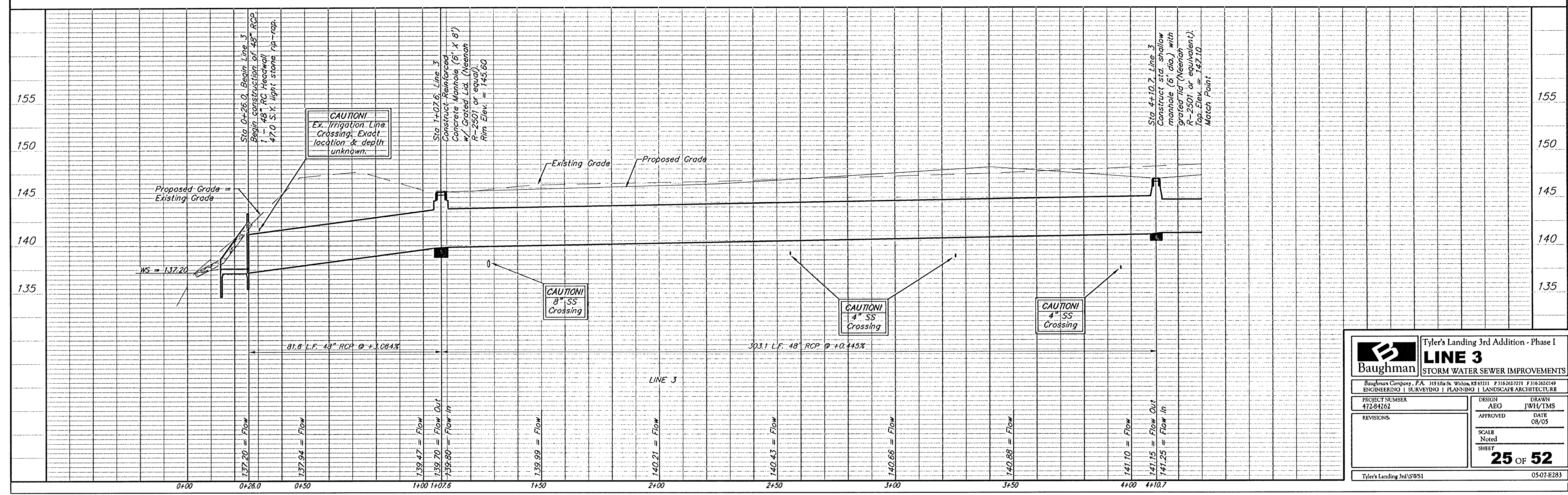
BM #3: "□" in the Concrete Footing of the SBC Pedestal in the South West Corner of 37th Street North and Tyler Road Sta. 8+56, 95' Rt. Elev. = 1342.17 MSL

BM #4: Railroad Spike in the East Face of the 2nd Power Pole North of 37th Street and West of Tyler Road Sta. 94+24, 48' Lt. Elev. = 1342.85 MSL

Pond data:
Static ws elev. = 137.2
100-yr ws elev. is
Variable along reach



Scale: 1" = 20' Horizontal
1" = 5' Vertical
• = Iron



		Tyler's Landing 3rd Addition - Phase I LINE 3 STORM WATER SEWER IMPROVEMENTS	
Baughman Company, P.A. 315 E. 11th St. Wichita, KS 67211 F 316-263-7271 F 316-263-0149 ENGINEERING SURVEYING PLANNING LANDSCAPE ARCHITECTURE			
PROJECT NUMBER 472-24262	DESIGN AEG	DRAWN JWV/TMS	DATE 08/05
REVISIONS	SCALE Noted SHEET 25 OF 52		
Tyler's Landing 3rd SWS1		0507-E283	