

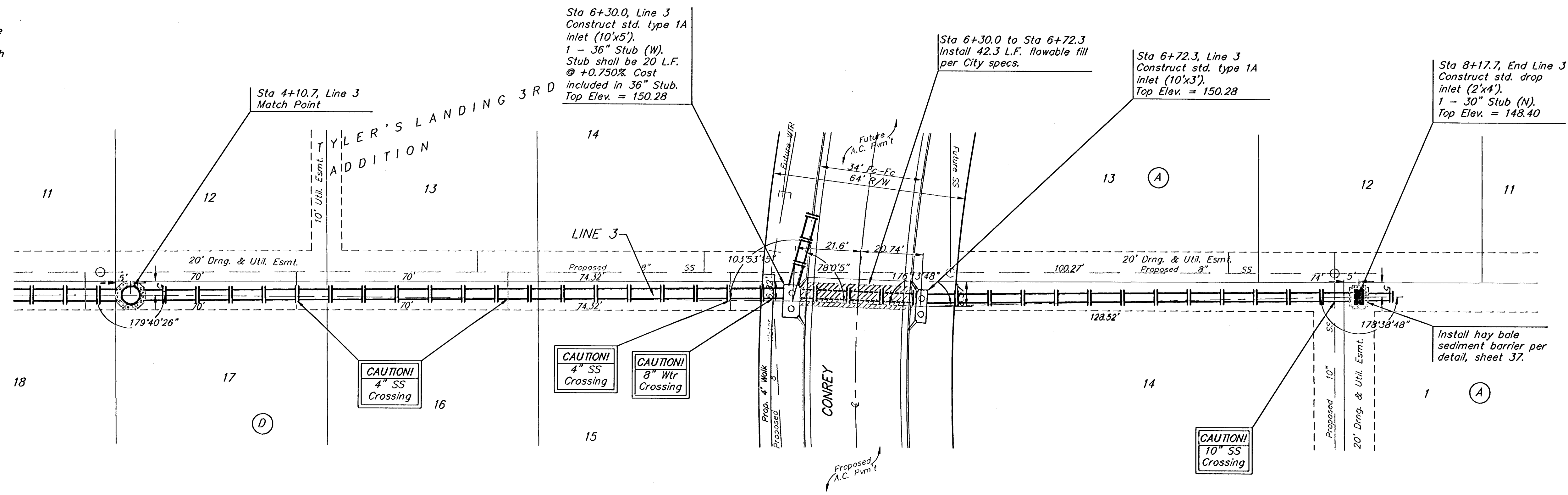
**BENCHMARKS:**

BM #1: "X" on the West End of the Steel Casing Pipe at the Railroad Crossing South of 37th Street North Sta. 25+90, 41' Rt. Elev. = 1336.58 MSL

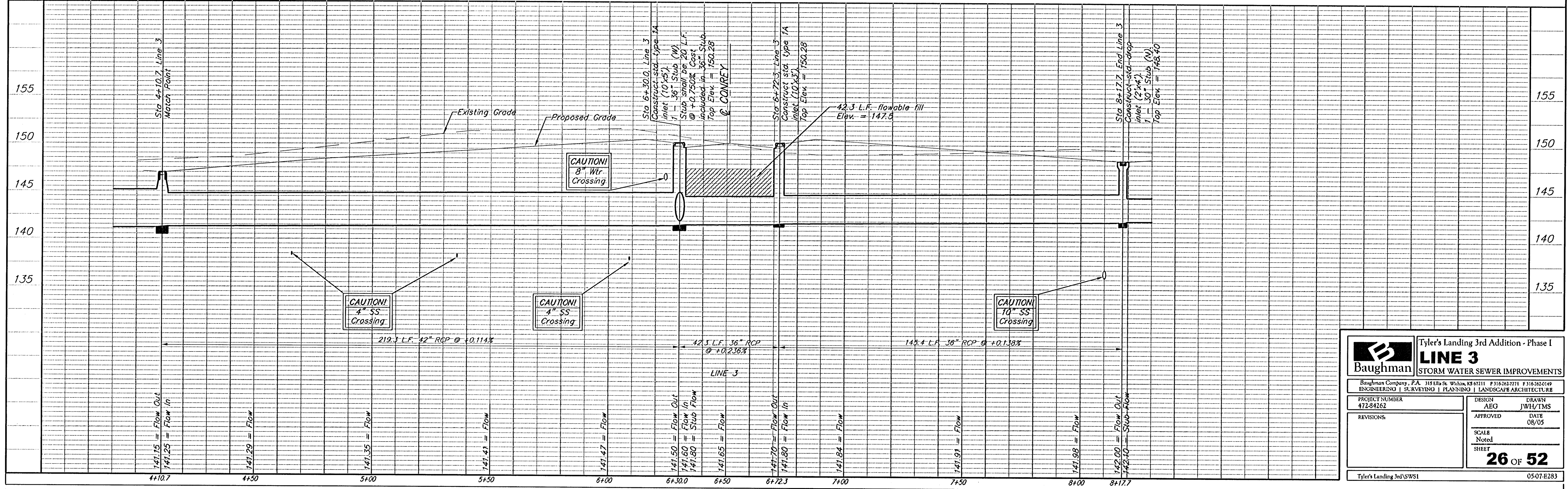
BM #2: Steel T-Post Driven 4' Deep Sta. 18+00, 25' Rt. Elev. = 1337.73 MSL

BM #3: "□" in the Concrete Footing of the SBC Pedestal in the South West Corner of 37th Street North and Tyler Road Sta. 8+56, 95' Rt. Elev. = 1342.17 MSL

BM #4: Railroad Spike in the East Face of the 2nd Power Pole North of 37th Street and West of Tyler Road Sta. 94+24, 48' Lt. Elev. = 1342.85 MSL



Scale: 1" = 20' Horizontal  
1" = 5' Vertical  
• = Iron



|   |  |  |               |
|---|--|--|---------------|
|   |  | Tyler's Landing 3rd Addition - Phase I |               |
|   |  | <b>LINE 3</b>                          |               |
| Baughman Company, P.A. 315 Ellis St. Wichita, KS 67211 F315333-2711 F315333-2149<br>ENGINEERING   SURVEYING   PLANNING   LANDSCAPE ARCHITECTURE |  | STORM WATER SEWER IMPROVEMENTS         |               |
| PROJECT NUMBER<br>472-84262   | DESIGN<br>AEO                              | DRAWN<br>JWH/TMS                       | DATE<br>08/05 |
| REVISIONS   | SCALE<br>Noted<br>SHEET<br><b>26 OF 52</b> |  |               |
| Tyler's Landing 3rd SWS1  |  | 05-07-E283                             |               |