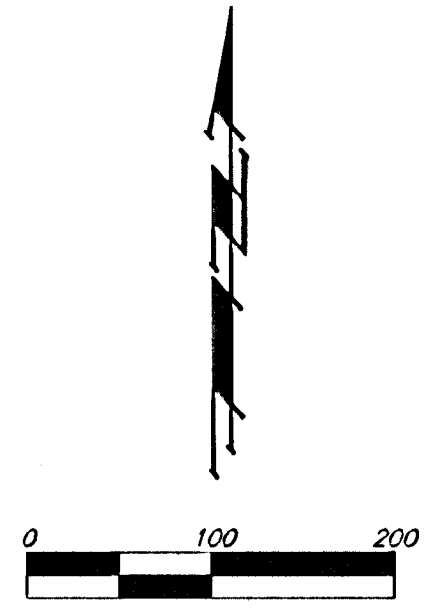
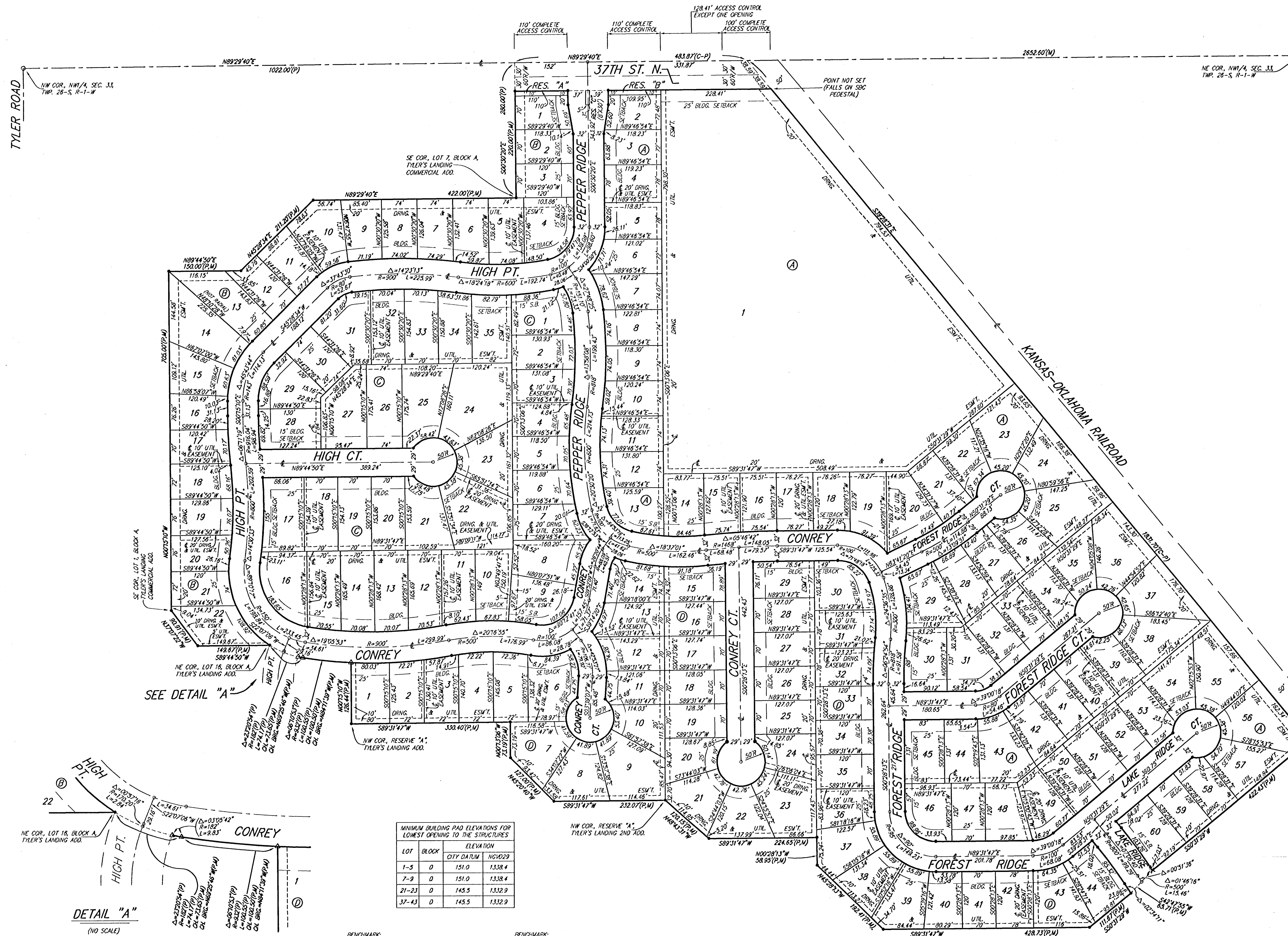


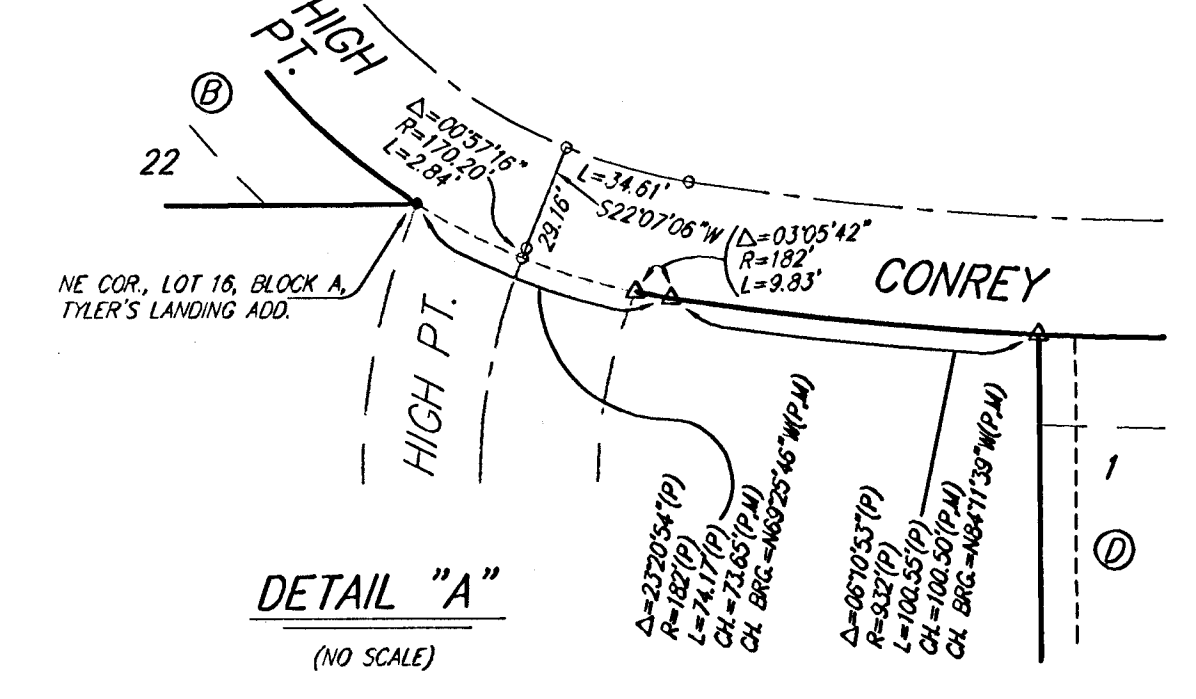
TYLER'S LANDING 3RD ADDITION

WICHITA, SEDGWICK COUNTY, KANSAS

7128



- = #4 REBAR W/ 'BAUGHMAN' CAP (SET)
 - = CROSS (SET)
 - = 3/4" IRON (FOUND)
 - = #5 REBAR (FOUND)
 - △ = #4 REBAR W/ 'SS950' CAP (FOUND)
- (M) = MEASURED
(P) = PLATTED
(C-P) = CALCULATED PER PLATTED INFO.



LOT	BLOCK	CITY DATUM	NGVD29
1-5	D	151.0	133.4
7-9	D	151.0	133.4
21-23	D	145.5	133.2
37-43	D	145.5	133.2

BENCHMARK:
1" BRASS DISC ON TOP OF CURB AT NORTHWEST END OF CURB RETURN, NORTHEAST CORNER OF THE INTERSECTION OF LAKE RIDGE AND LAKE RIDGE CT., TYLER'S LANDING 2ND ADD.
BRASS DISC IS SOUTH OF THE SOUTH LOT CORNER COMMON TO LOTS 7 AND 8, BLOCK A, IN SAID TYLER'S LANDING 2ND ADD.
ELEV. = 1332.77 NGVD29 (145.37 CITY DATUM)

BENCHMARK:
1" BRASS DISC ON TOP OF NORTH CURB ON 34TH STREET NORTH IN TYLER'S LANDING 2ND ADD.
BRASS DISC IS SOUTH OF THE SOUTH LOT CORNER COMMON TO LOTS 7 AND 8, BLOCK A, IN SAID TYLER'S LANDING 2ND ADD.
ELEV. = 1335.64 NGVD29 (148.24 CITY DATUM)

NOTE:
A master grading plan for drainage has been developed for this subdivision and is on file with the City of Wichita, Kansas. All drainage easements, rights-of-way or reserves shall remain of established grades or as modified with the approval of the City Engineer of the City of Wichita, Kansas. No obstructions which impede the flow of this drainage system shall be allowed.

NOTE:
A drainage plan has been developed for this subdivision and is on file with the City of Wichita, Kansas. Drainage intent shall remain as depicted or as modified with the approval of the City Engineer of the City of Wichita, Kansas. No obstructions which impede the flow of this drainage plan shall be allowed.