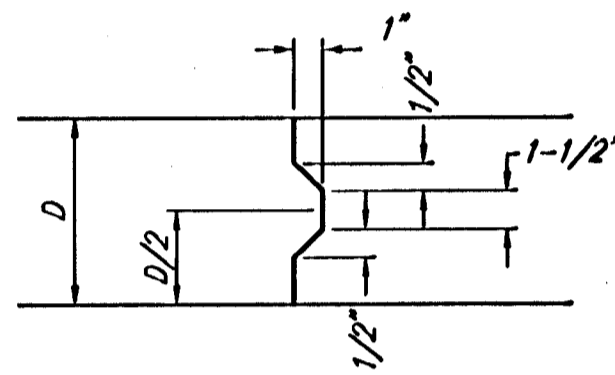
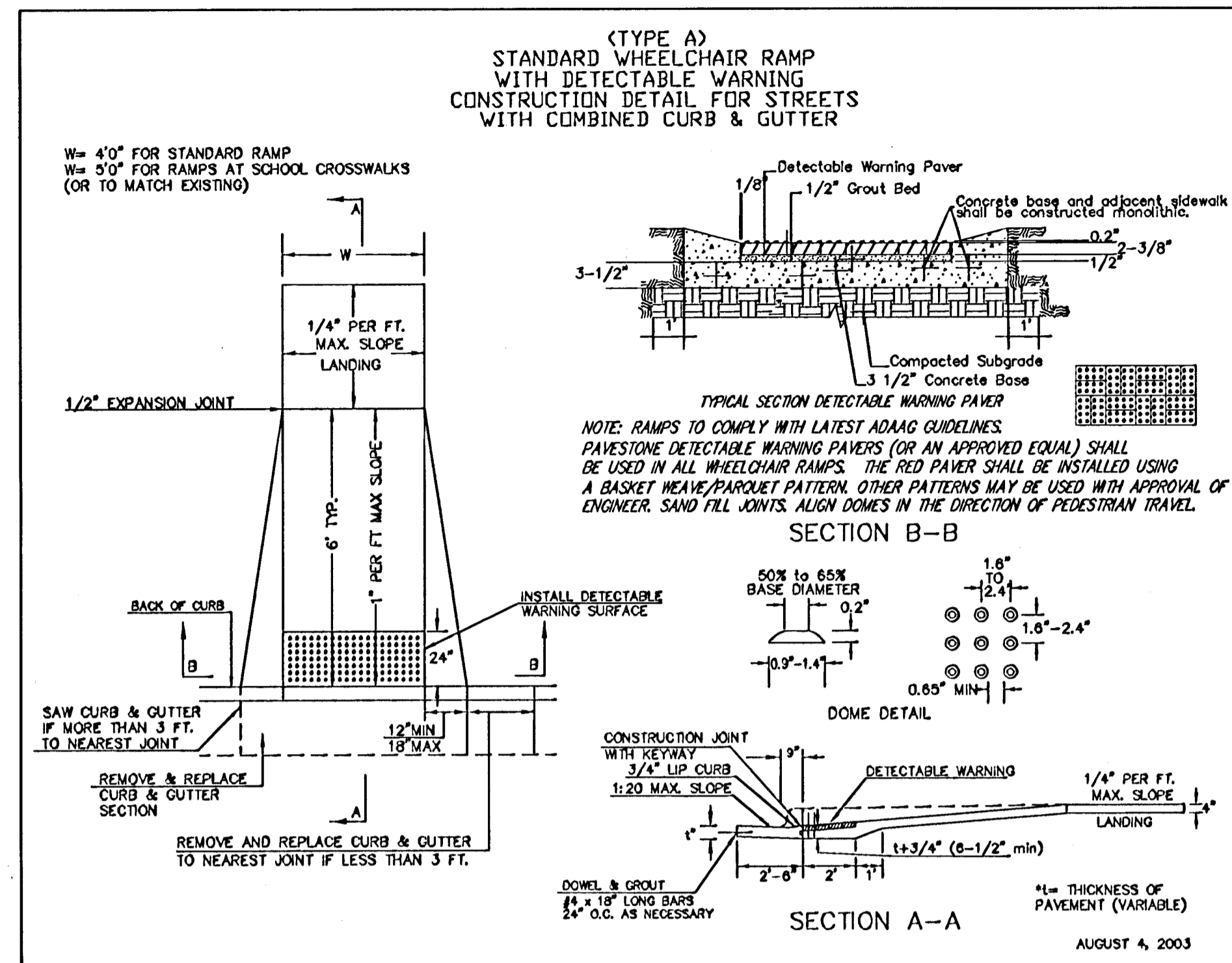


**EXPANSION JOINT**

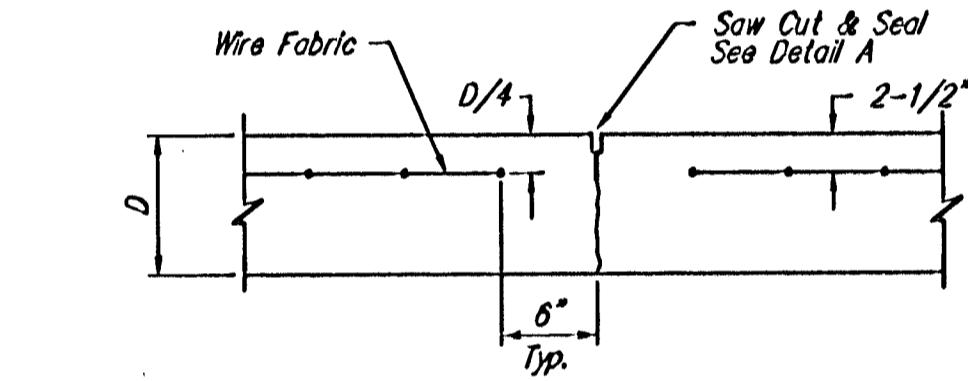
NOTE: Extra Thickness to be Subsidiary to Price of Square Yards Pavement



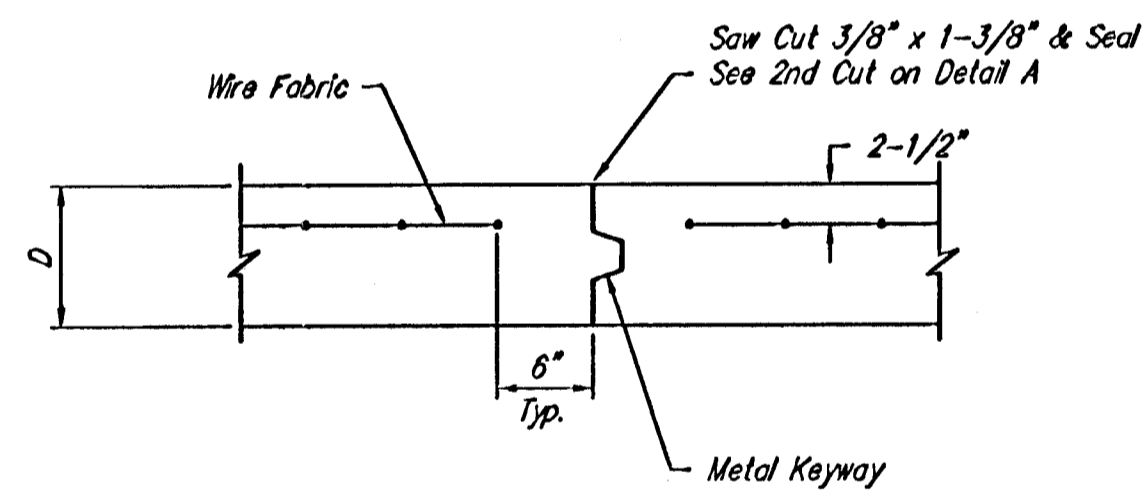
**KEYWAY DETAIL**



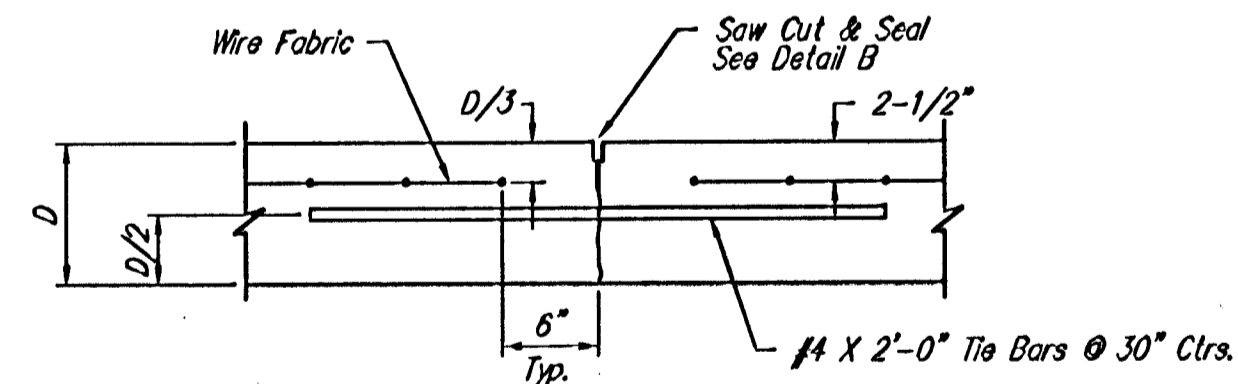
**WHEELCHAIR RAMP DETAIL**



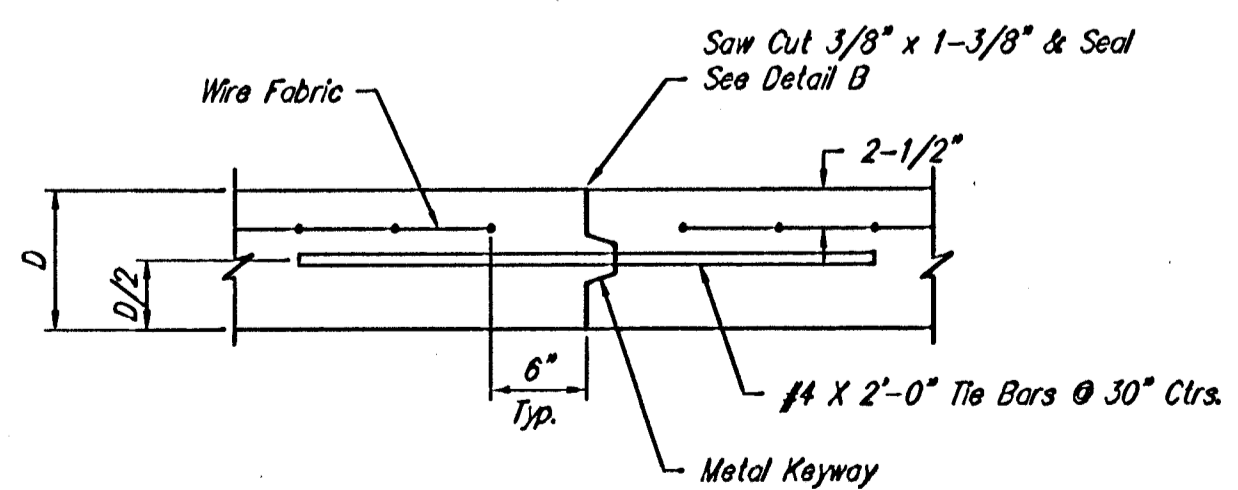
**CONTRACTION JOINT DETAIL (C.J.)**



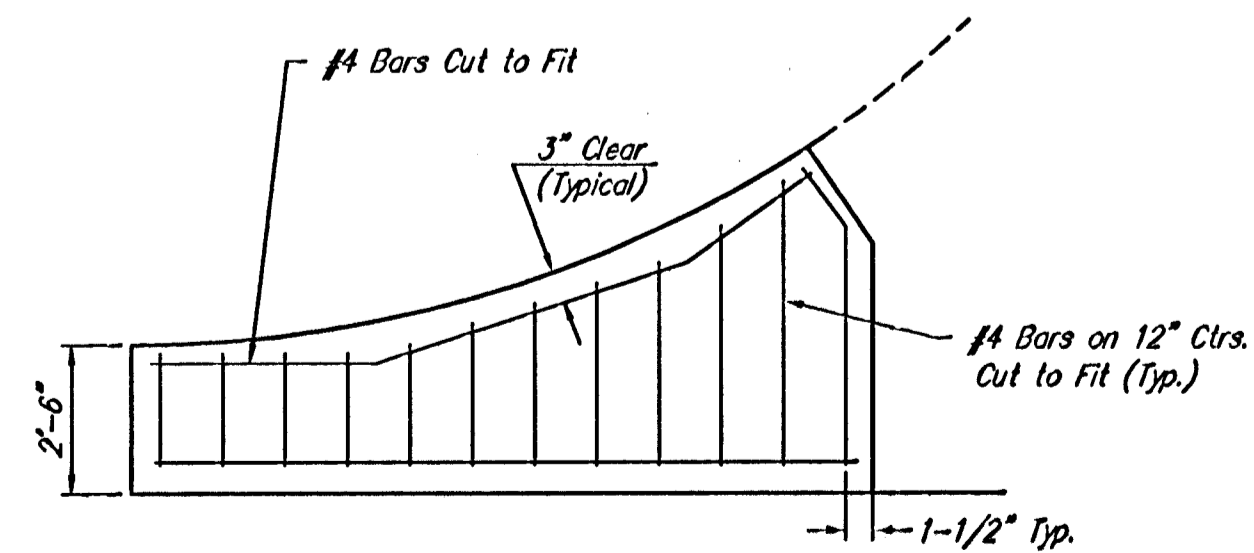
**OPTIONAL CONTRACTION JOINT (CONSTRUCTION JOINT)**



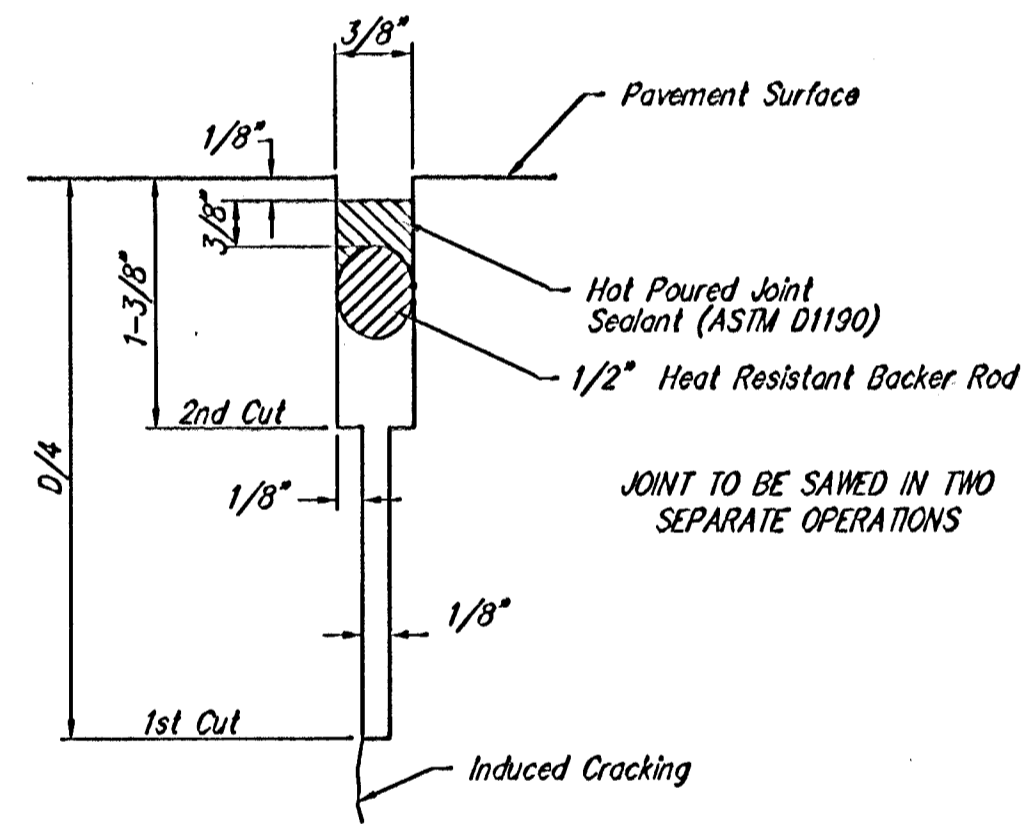
**LONGITUDINAL JOINT DETAIL (L.J.)**



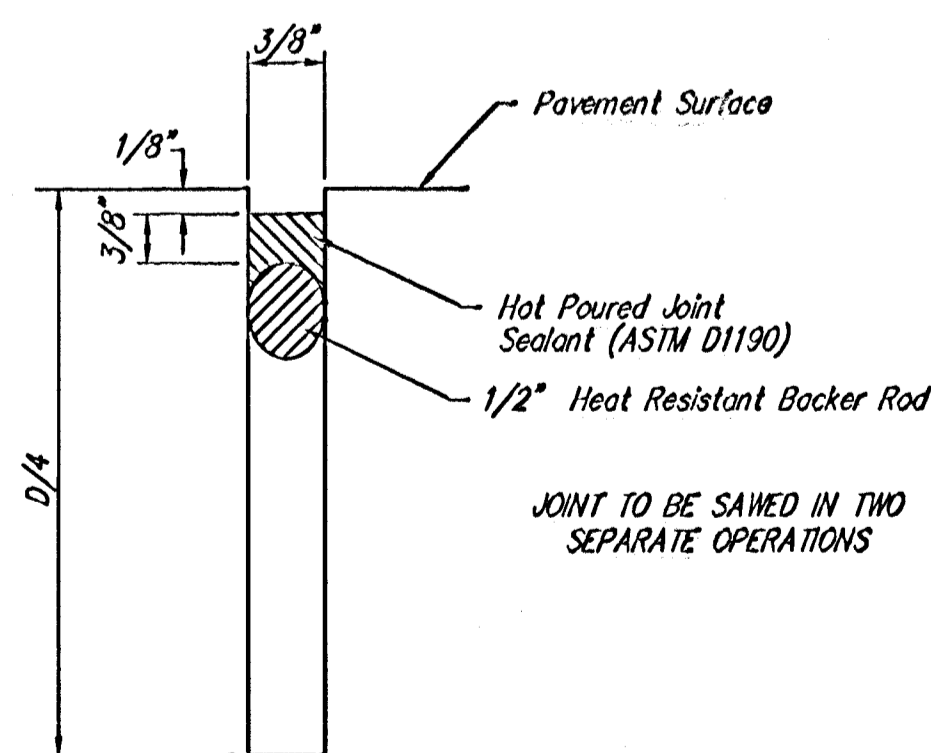
**OPTIONAL LONGITUDINAL JOINT DETAIL (L.J.) (CONSTRUCTION JOINT)**



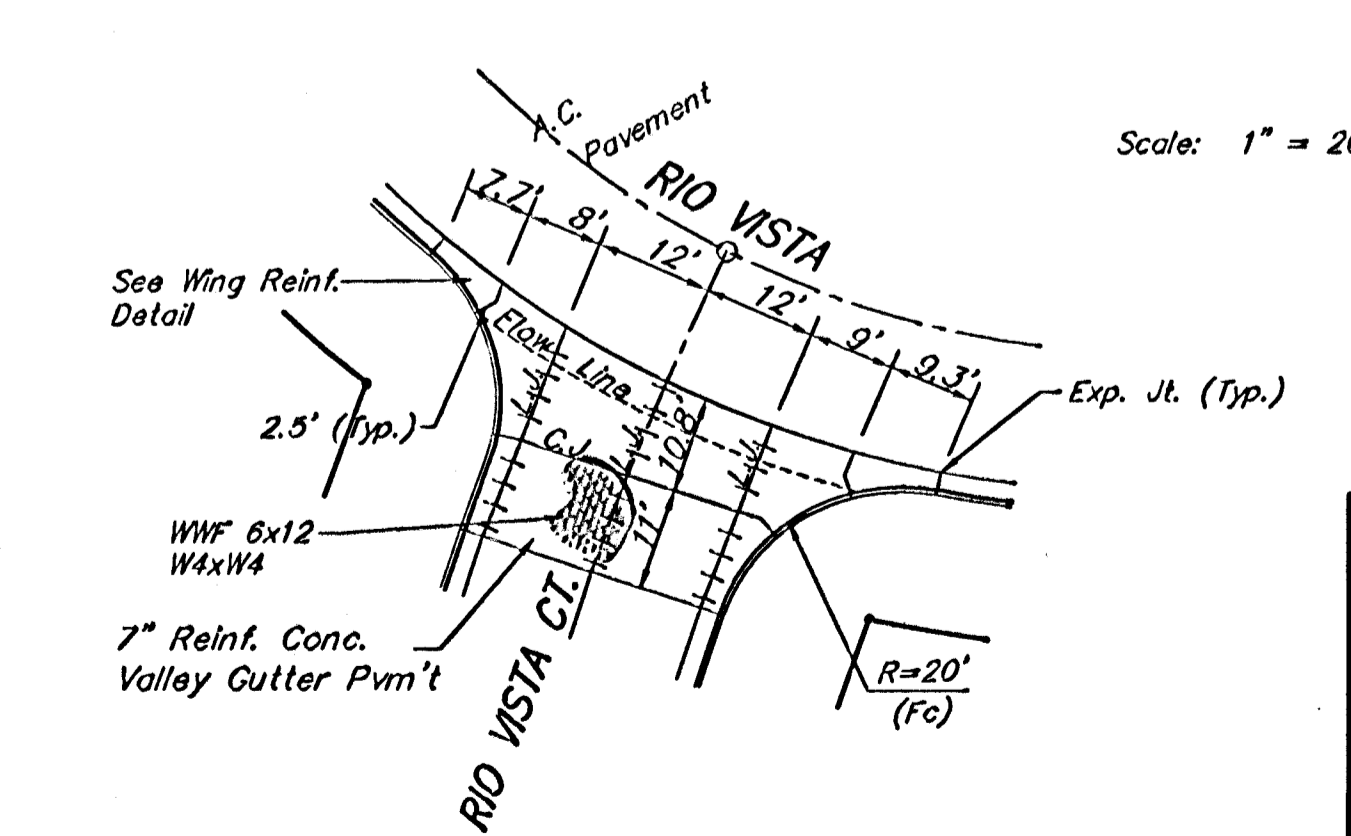
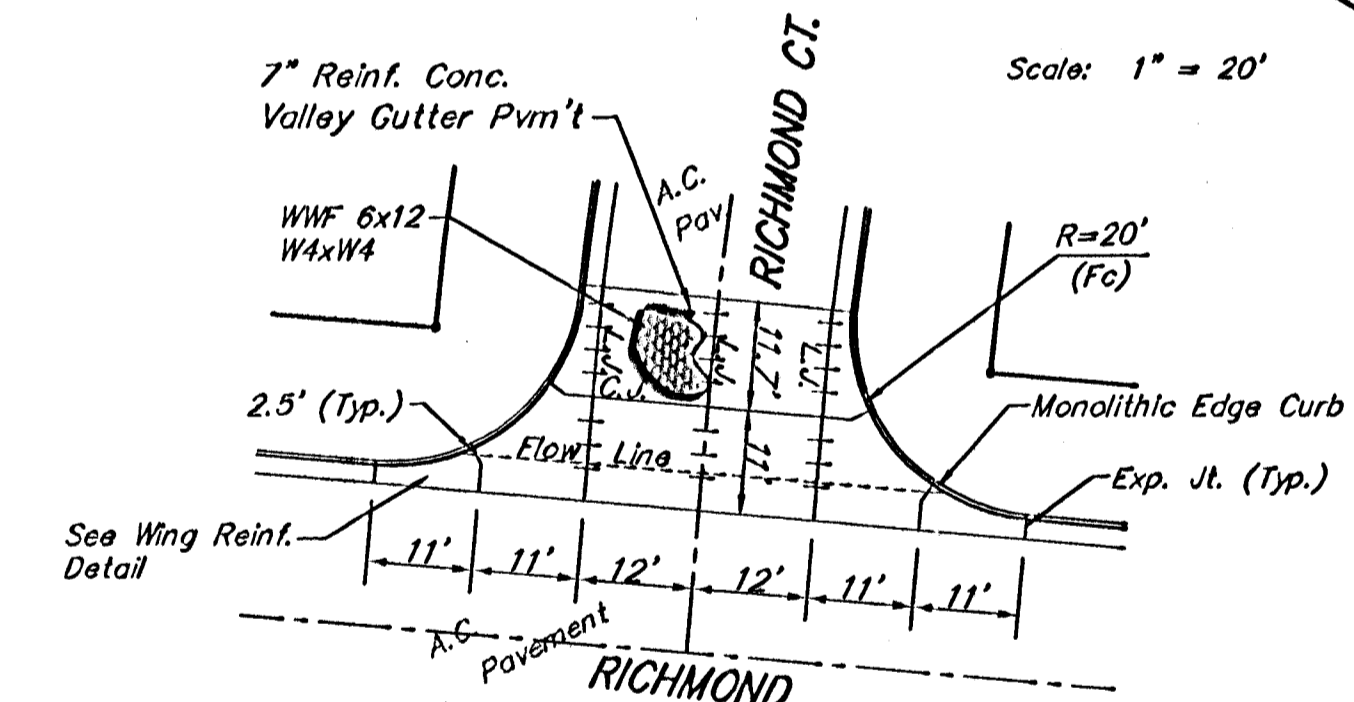
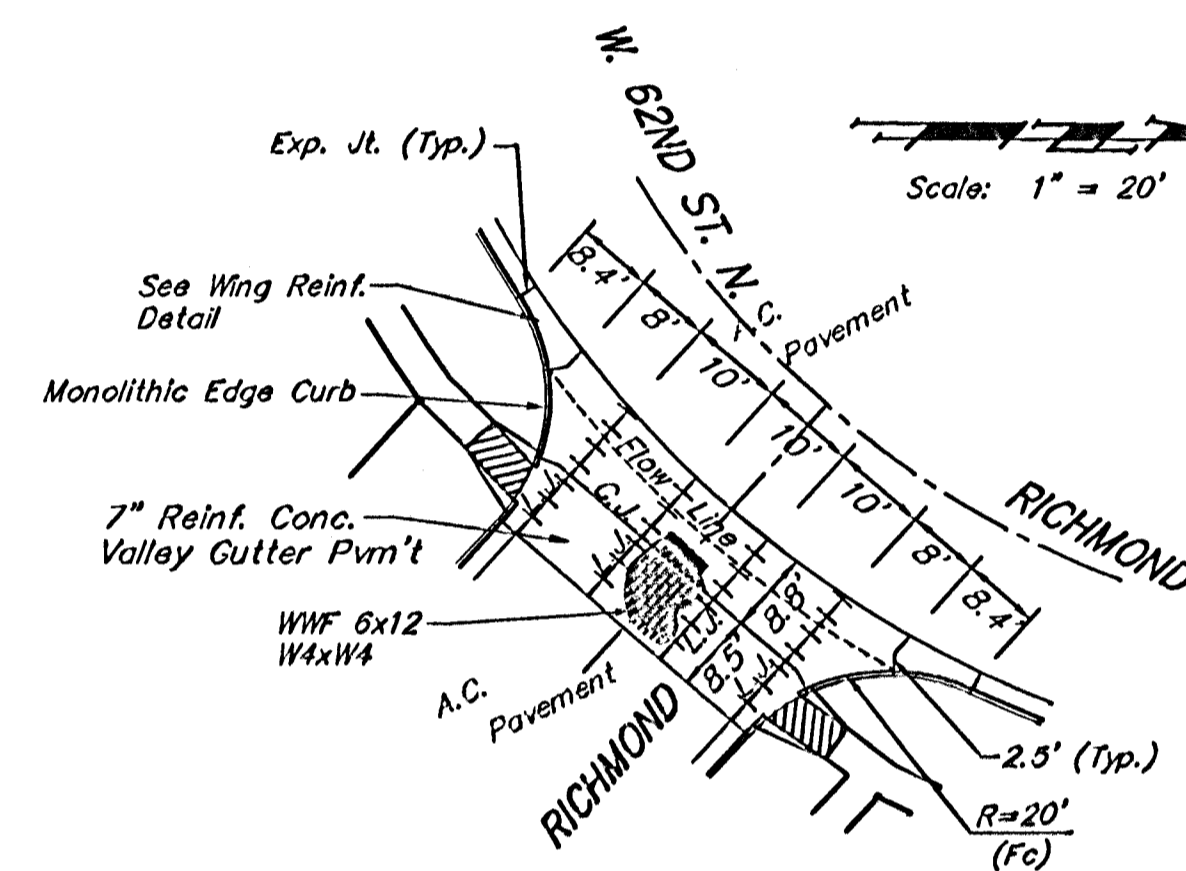
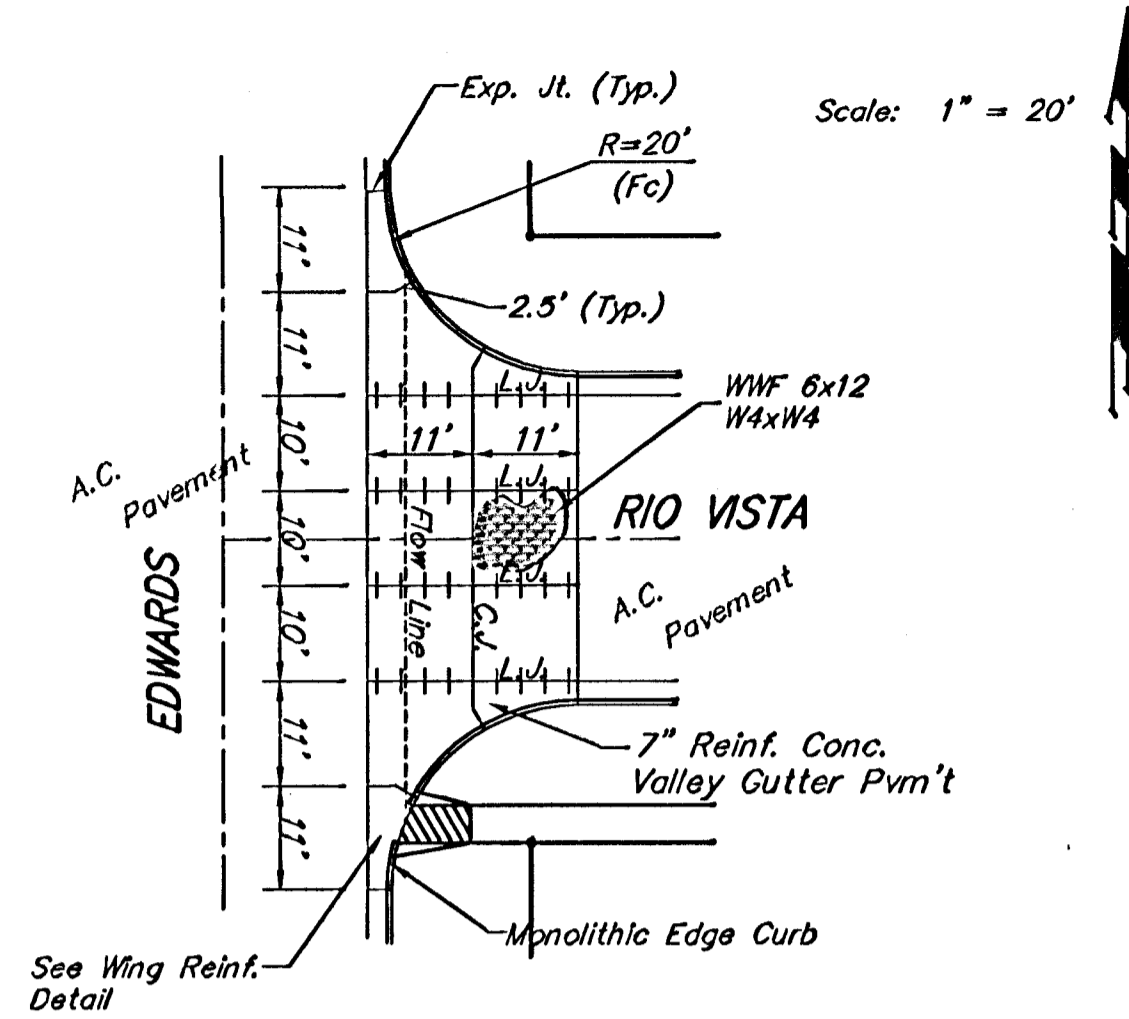
**WING REINFORCING DETAIL**



**SAW JOINT DETAIL "A"**



**SAW JOINT DETAIL "B"**



NOTE: 6" X 12" W4XW4 Wire Fabric Reinforcing Shall Be Placed So That The Wires With The 6" Spacing Will Run Parallel With The Longitudinal Joints.

<b>Baughman</b>		Rio Vista Estates 4th	
		<b>VALLEY GUTTER DETAILS</b>	
Baughman Company, P.A. 315 E. 8th St. Wichita, KS 67211 P 316-262-7171 F 316-262-0149			
ENGINEERING   SURVEYING   PLANNING   LANDSCAPE ARCHITECTURE			
PROJECT NUMBER 472-84056	DESIGN STAFF	DRAWN STAFF	
REVISIONS	APPROVED	DATE	08/05
		SCALE	NONE
		SHEET	<b>5 OF 51</b>
P:\eng\Rio Vista\Wgdetail.dwg		05-03-B204	