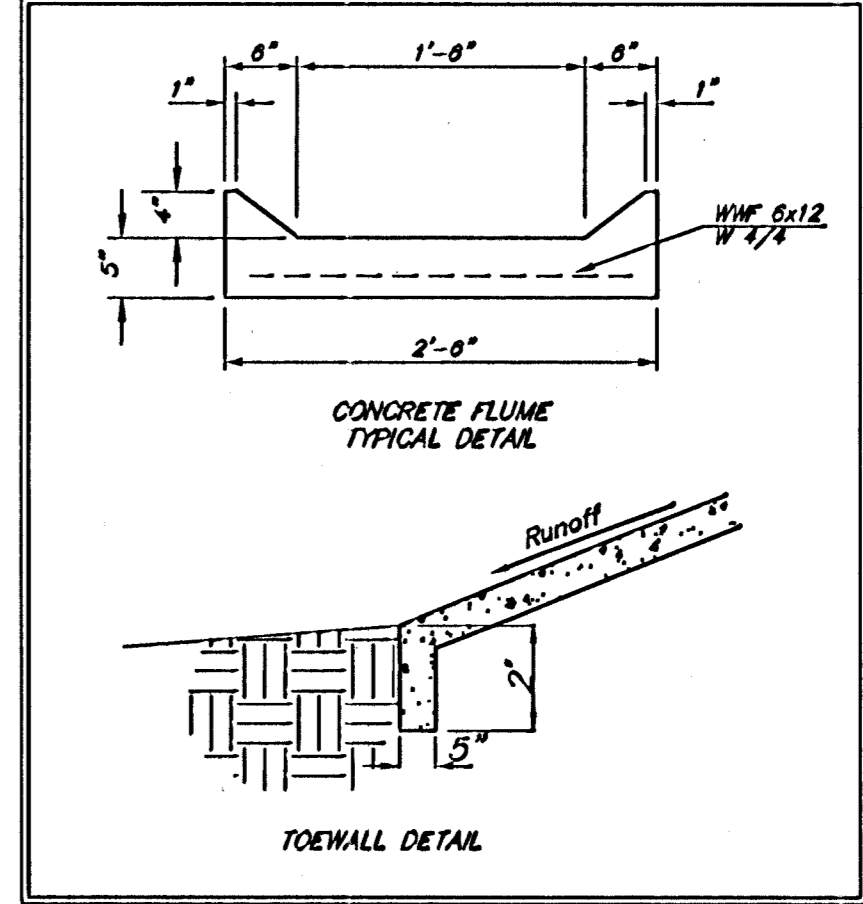
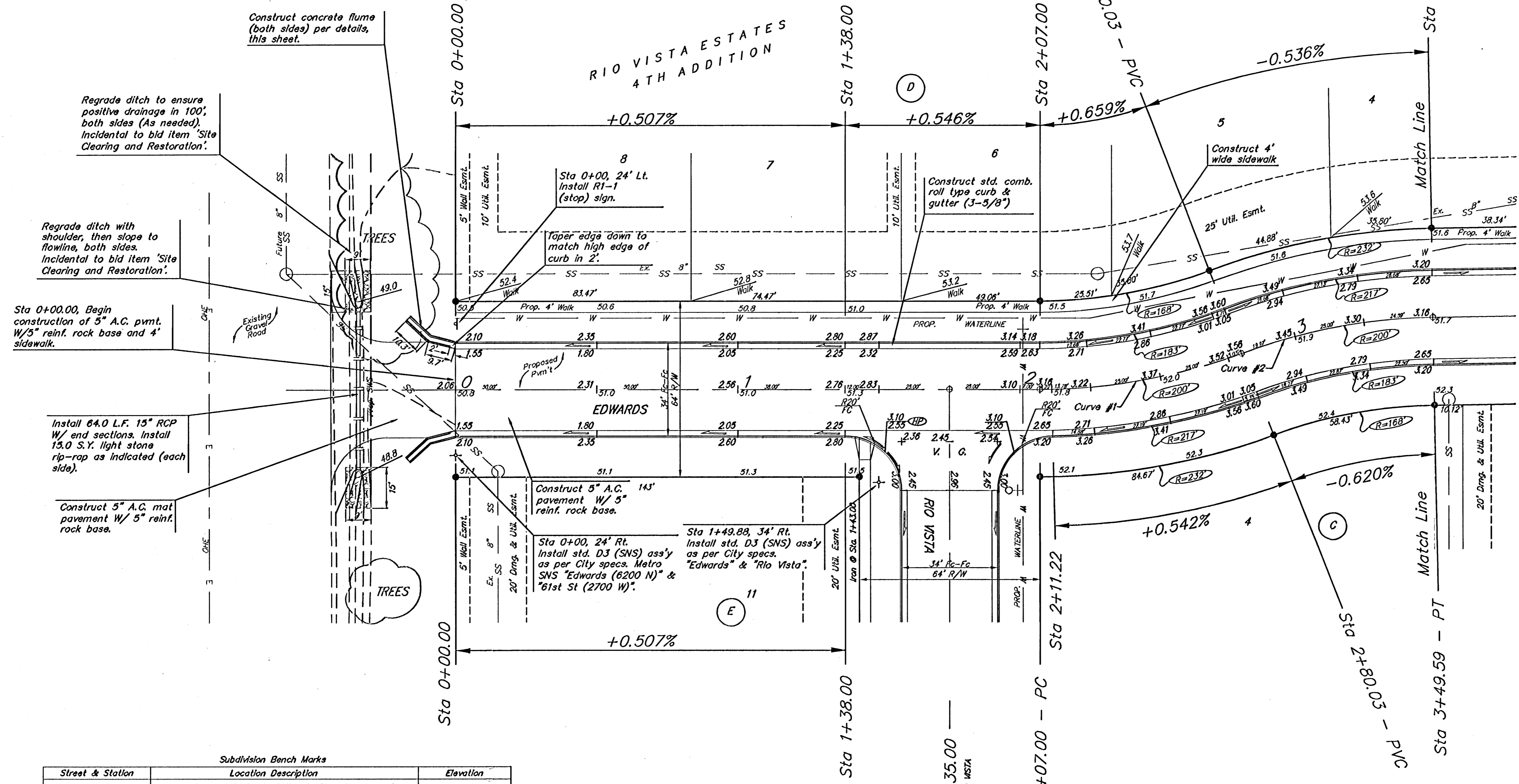
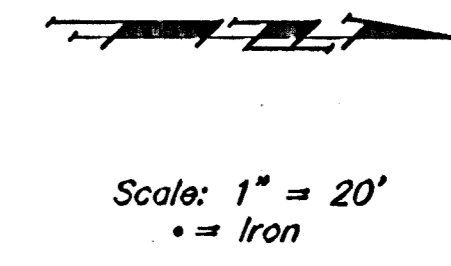


BENCHMARK:
 R.R. SPIKE IN HLP, 150' E. & 30'
 S. OF THE S.W. COR., S.E. 1/4,
 SEC. 12-26-1W.
 ELEV. = 1338.96 M.S.L.
 ELEV. = 151.56 City Datum

"0" IN OPEN, TOP FLANGE OF FIRE
 HYDRANT AT THE S.W. CORNER
 OF 61ST ST. N. & MERIDIAN AVE.
 ELEV. = 1339.16 M.S.L.
 ELEV. = 151.76 City Datum

Curve #1
 Curve Data Based on Centerline
 Rad. = 200.00' Delta = 17°55'49" Tangent = 30.34'
 Arc = 73.03' L.C. = 89.95' Del/Pt. = 7.36558 Min.

Station	Arc	FACE CHORD LENGTHS		Defl.	T. Defl.
		8' Lt.	8' Rt.		
2+07.00	-	-	-	0°00'00"	0°00'00"
2+11.22	4.22'	3.03'	3.93'	0°31'05"	0°31'05"
2+25.00	13.78'	9.88'	12.83'	1°41'50"	2°12'35"
2+50.00	23.00'	17.92'	23.27'	3°04'08"	3°16'43"
2+75.00	23.00'	17.92'	23.27'	3°04'08"	3°20'52"
2+80.03	5.03'	3.61'	4.68'	0°37'03"	0°37'55"



NOTE: ROLL TYPE CURB & GUTTER TO BE CONSTRUCTED ON THE PAVEMENT SHOWN ON THIS SHEET. TOP OF CURB ELEVATIONS ARE GIVEN FOR FULL HEIGHT CURB.

Subdivision Bench Marks

Street & Station	Location Description	Elevation
Rio Vista 0+37.0, 17.50' Lt.	Adjacent to Fire Hydrant at the Southwest corner of Lot 4, Block C	
W. 62nd St. North 0+20.0, 17.50' Lt.	Adjacent to Fire Hydrant at the Southwest corner of Lot 13, Block A	
Richmond 15+15.62, 17.50' Lt.	Adjacent to Fire Hydrant at the Northeast corner of Lot 1, Block A	
Richmond Ct. 0+37.71, 14.50' Lt.	Adjacent to Fire Hydrant at the Northeast corner of Lot 13, Block A	
Richmond 8+32.84, 17.50' Lt.	Adjacent to Fire Hydrant at the Northeast corner of Lot 9, Block C	
Rio Vista Ct. 0+36.77, 14.50' Lt.	Adjacent to Fire Hydrant at the Northwest corner of Lot 1, Block E	

Adjust water valve boxes as needed to grade. Incidental to 'Site Clearing and Restoration'.

Contractor to remove existing trees, fence, etc. as needed to complete paving project. Removal shall be incidental to bid item 'Site Clearing and Restoration'.

Curve #2
 Curve Data Based on Centerline
 Rad. = 200.00' Delta = 16°56'44" Tangent = 26.36'
 Arc = 69.58' L.C. = 52.27' Del/Pt. = 6.49272 Min.

Station	Arc	FACE CHORD LENGTHS		Defl.	T. Defl.
		8' Lt.	8' Rt.		
2+50.03	-	-	-	0°00'00"	0°00'00"
3+00.00	19.97'	16.93'	13.16'	2°03'40"	2°03'40"
3+25.00	25.00'	21.19'	16.47'	2°42'19"	4°51'59"
3+49.59	24.53'	20.85'	16.20'	2°39'39"	7°31'38"

Rio Vista Estates 4th Addition
Edwards
 STA 0+00 TO STA 3+49.59

Baughman
 ENGINEERING | SURVEYING | PLANNING | LANDSCAPE ARCHITECTURE

PROJECT NUMBER: 472-84056
 REVISIONS:

DESIGNER: MWS
 DRAWN: JWH
 APPROVED: [Signature]
 DATE: 7/05

SCALE: Noted
 SHEET: **6 OF 51**

Rio Vista Estates.dwg 05-03-E204