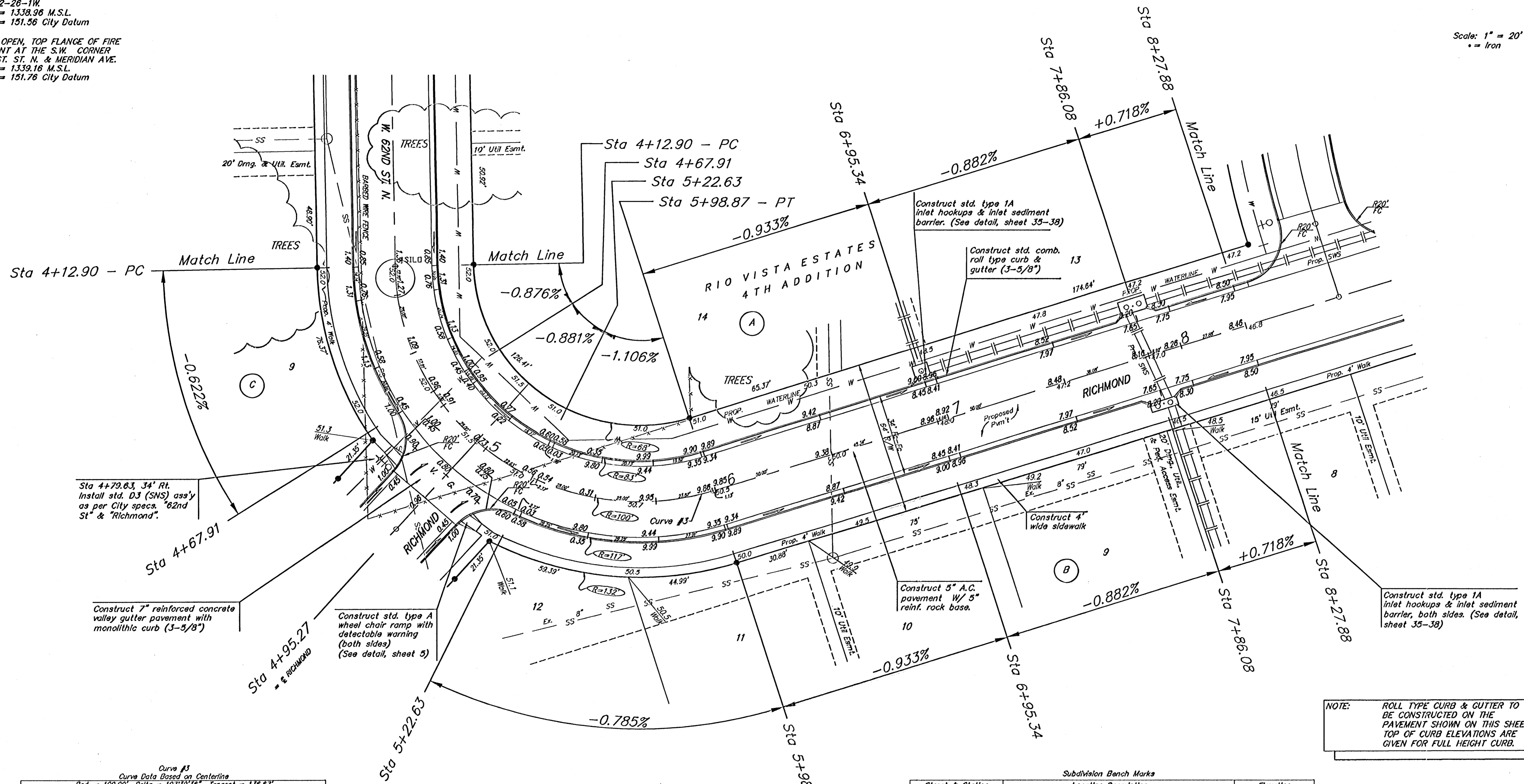


**BENCHMARK:**  
 R.R. SPIKE IN HLP, 150' E. & 30'  
 S. OF THE S.W. COR., S.E. 1/4,  
 SEC. 12-26-1W  
 ELEV. = 1338.96 M.S.L.  
 ELEV. = 151.36 City Datum

"0" IN OPEN, TOP FLANGE OF FIRE  
 HYDRANT AT THE S.W. CORNER  
 OF 61ST. ST. N. & MERIDIAN AVE.  
 ELEV. = 1339.16 M.S.L.  
 ELEV. = 151.76 City Datum



Scale: 1" = 20'  
 = Iron



Sta 4+79.83 34' Rt.  
 Install std. D3 (SNS) ass'y  
 as per City specs. 62nd  
 St & Richmond.

Construct 7" reinforced concrete  
 valley gutter pavement with  
 monolithic curb (3-5/8")

Construct std. type A  
 wheel chair ramp with  
 detectable warning  
 (both sides)  
 (See detail, sheet 5)

Construct 5" A.C.  
 pavement w/ 5"  
 reinf. rock base.

Construct std. type 1A  
 inlet hookups & inlet sediment  
 barrier. (See detail, sheet 35-38)

Construct std. comb.  
 roll type curb &  
 gutter (3-5/8")

Construct std. type 1A  
 inlet hookups & inlet sediment  
 barrier, both sides. (See detail,  
 sheet 35-38)

**NOTE:** ROLL TYPE CURB & GUTTER TO  
 BE CONSTRUCTED ON THE  
 PAVEMENT SHOWN ON THIS SHEET.  
 TOP OF CURB ELEVATIONS ARE  
 GIVEN FOR FULL HEIGHT CURB.

Curve #3  
 Curve Data Based on Centerline  
 Rad. = 100.00' Delta = 107°39'36" Tangent = 138.87'  
 Arc = 185.97' L.C. = 161.32' Del/Pt. = 17.36732 Min.

Station	Arc	FACE CHORD LENGTHS		Defl.	T. Defl.
		8' Lt.	8' Rt.		
4+12.90	-	-	-	0°00'00"	0°00'00"
4+25.00	12.10'	9.15'	13.26'	3°30'03"	3°30'03"
4+50.00	25.00'	18.82'	31.42'	7°14'11"	10°44'20"
4+67.91	17.91'	13.54'	22.57'	5°11'03"	15°55'23"
4+75.00	7.09'	5.37'	8.95'	2°03'08"	17°58'31"
4+95.27	20.27'	15.32'	28.54'	5°52'02"	23°50'53"
5+00.00	4.73'	3.58'	5.92'	1°22'09"	25°12'42"
5+22.63	22.83'	17.09'	28.50'	6°33'01"	31°45'43"
5+25.00	2.37'	1.79'	2.89'	0°41'01"	32°28'53"
5+50.00	25.00'	18.82'	31.42'	7°14'11"	39°41'04"
5+75.00	25.00'	18.82'	31.42'	7°14'11"	46°53'15"
5+98.87	23.97'	18.03'	30.06'	6°54'33"	53°49'48"

Adjust water valve  
 boxes as needed to  
 grade.  
 Incidental to Site  
 Clearing and  
 Restoration.

Contractor to remove  
 existing trees, fence, etc.  
 as needed to complete  
 paving project. Removal  
 shall be incidental to bid  
 item 'Site Clearing and  
 Restoration'.

Subdivision Bench Marks

Street & Station	Location Description	Elevation
Rio Vista 0+37.0, 17.50' Lt.	Adjacent to Fire Hydrant at the Southwest corner of Lot 4, Block C	
W 62nd St. North 0+20.0, 17.50' Lt.	Adjacent to Fire Hydrant at the Southwest corner of Lot 18, Block A	
Richmond 15+13.62, 17.50' Lt.	Adjacent to Fire Hydrant at the Northeast corner of Lot 1, Block A	
Richmond Ct. 0+37.71, 14.50' Lt.	Adjacent to Fire Hydrant at the Northeast corner of Lot 13, Block A	
Richmond 8+32.84, 17.50' Lt.	Adjacent to Fire Hydrant at the Northeast corner of Lot 9, Block C	
Rio Vista Ct. 0+36.77, 14.50' Lt.	Adjacent to Fire Hydrant at the Northwest corner of Lot 1, Block E	

**Baughman** Richmond  
 STA 4+12.90 TO STA 8+27.88

Baughman Company, P.A. 315 Ellis St. Williams, PA 15382-7711 P 316-282-7711 F 316-282-0149  
 ENGINEERING | SURVEYING | PLANNING | LANDSCAPE ARCHITECTURE

PROJECT NUMBER: 472-84955  
 DESIGN: MWS  
 DRAWN: JWH  
 APPROVED: DWT  
 DATE: 7/05

SCALE: Noted  
 SHEET: 9 OF 51

Rio Vista 4th Addn.dwg 05-03-E204