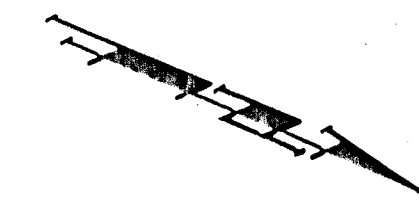
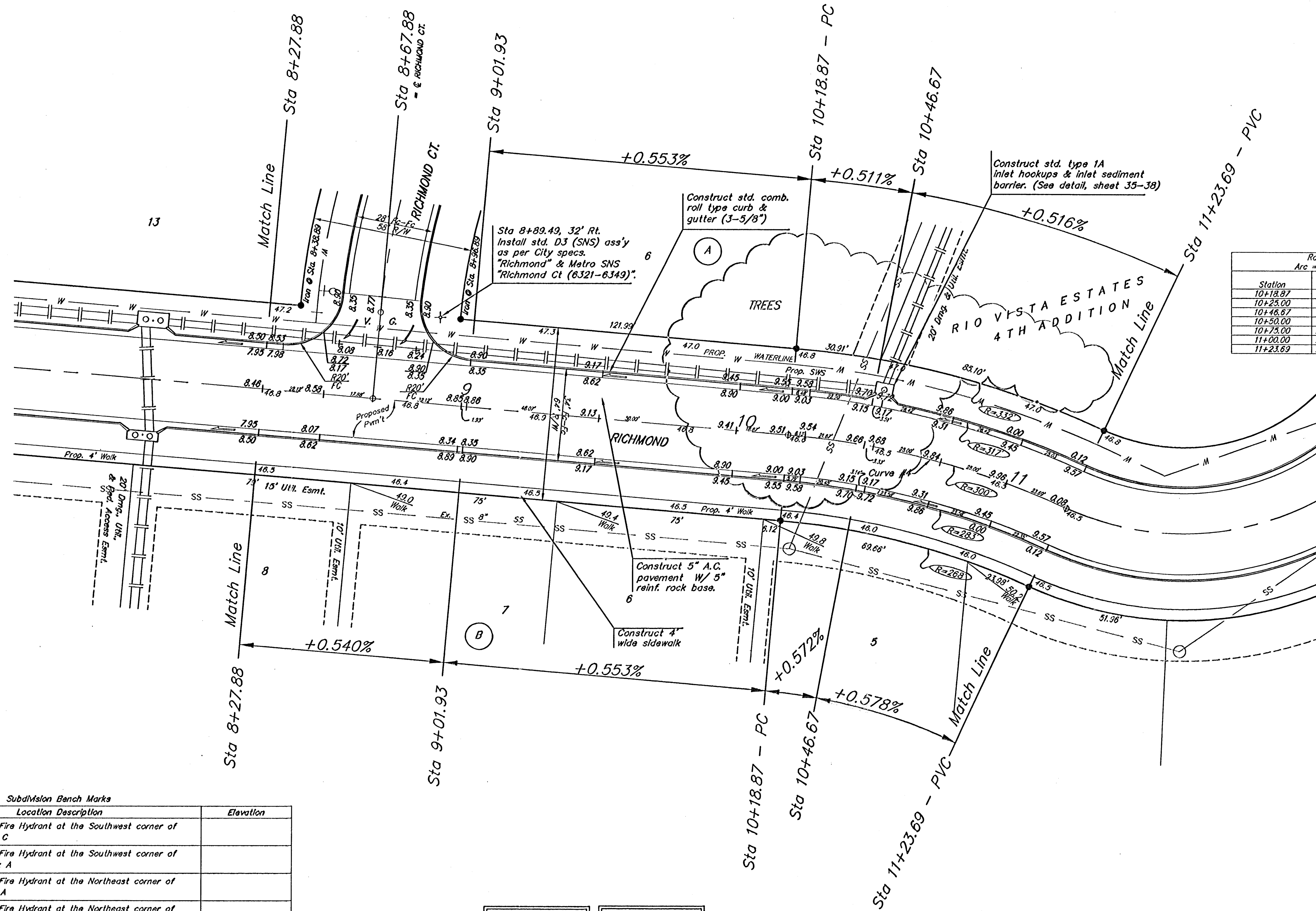


**BENCHMARK:**  
 R.R. SPIKE IN HLP, 150' E. & 30'  
 S. OF THE S.W. COR., S.E. 1/4,  
 SEC. 12-26-1W  
 ELEV. = 1338.98 M.S.L.  
 ELEV. = 151.56 City Datum

"0" IN OPEN, TOP FLANGE OF FIRE  
 HYDRANT AT THE S.W. CORNER  
 OF 61ST. ST. N. & MERIDIAN AVE.  
 ELEV. = 1339.16 M.S.L.  
 ELEV. = 151.76 City Datum



Scale: 1" = 20'  
 • = Iron



Curve #4  
 Curve Data Based on Centerline  
 Rad. = 300' Delta = 207.4° Tangent = 52.95'  
 Arc = 104.82' L.C. = 104.28' Def/Fl. = 5.72919 Min.

Station	FACE CHORD LENGTHS		Defl.	T. Defl.
	8' Lt.	8' Rt.		
10+18.87	-	-	0.0000'	0.0000'
10+25.00	6.13'	6.64'	0.3507'	0.3507'
10+46.67	21.67'	23.47'	19.86'	2.9716'
10+50.00	3.33'	3.61'	0.1905'	2.9821'
10+75.00	25.00'	27.07'	22.91'	5.2155'
11+00.00	25.00'	27.07'	22.91'	7.4449'
11+23.69	23.69'	28.66'	21.71'	10.0032'

Subdivision Bench Marks

Street & Station	Location Description	Elevation
Rio Vista 0+37.0, 17.50' Lt.	Adjacent to Fire Hydrant at the Southwest corner of Lot 4, Block C	
W. 62nd St. North 0+20.0, 17.50' Lt.	Adjacent to Fire Hydrant at the Southwest corner of Lot 18, Block A	
Richmond 15+15.62, 17.50' Lt.	Adjacent to Fire Hydrant at the Northeast corner of Lot 1, Block A	
Richmond Ct. 0+37.71, 14.50' Lt.	Adjacent to Fire Hydrant at the Northeast corner of Lot 13, Block A	
Richmond 8+32.84, 17.50' Lt.	Adjacent to Fire Hydrant at the Northeast corner of Lot 9, Block C	
Rio Vista Ct. 0+36.77, 14.50' Lt.	Adjacent to Fire Hydrant at the Northwest corner of Lot 1, Block E	

Adjust water valve boxes as needed to grade. Incidental to 'Site Clearing and Restoration'.

**NOTE:** ROLL TYPE CURB & GUTTER TO BE CONSTRUCTED ON THE PAVEMENT SHOWN ON THIS SHEET. TOP OF CURB ELEVATIONS ARE GIVEN FOR FULL HEIGHT CURB.

**Baughman** Richmond  
 STA 8+27.88 TO STA 11+23.69

Richmond Company, P.A. 315 Ellis & Wilkes, 1807111 P316263771 F316262049  
 ENGINEERING | SURVEYING | PLANNING | LANDSCAPE ARCHITECTURE

PROJECT NUMBER 412-84056	DESIGN MWS	DRAWN JWH
REVISIONS	APPROVED	DATE 7/05
SCALE Noted		SHEET 10 OF 51

Rio Vista Lot 1.dwg 05-03-E204