

BENCHMARK:
 R.R. SPIKE IN HLP, 150' E. & 30'
 S. OF THE S.W. COR., S.E. 1/4,
 SEC. 12-28-1W.
 ELEV. = 1338.96 M.S.L.
 ELEV. = 151.56 City Datum

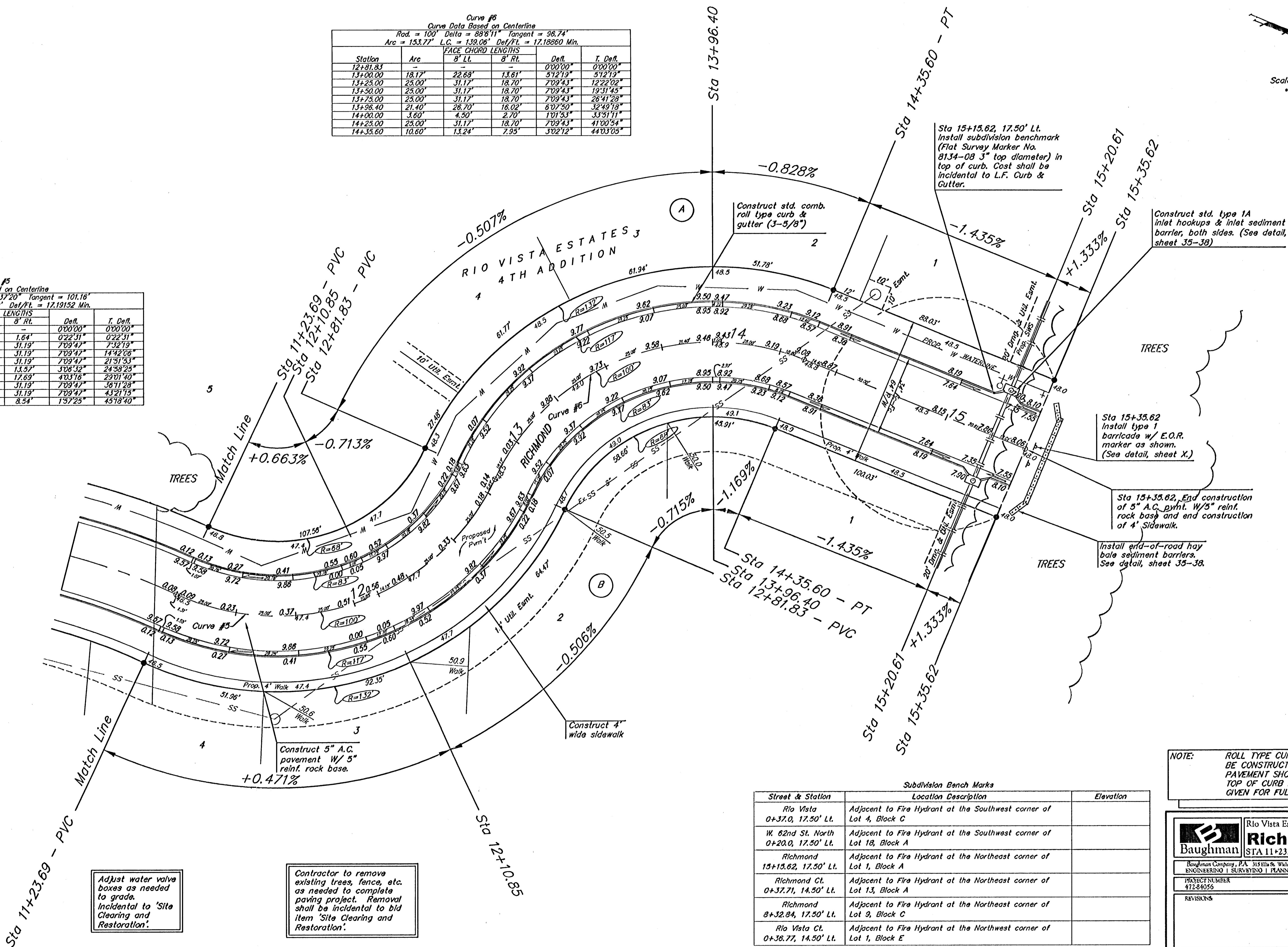
"O" IN OPEN, TOP FLANGE OF FIRE
 HYDRANT AT THE S.W. CORNER
 OF 61ST. ST. N. & MERIDIAN AVE.
 ELEV. = 1339.16 M.S.L.
 ELEV. = 151.76 City Datum

Curve #6
 Curve Data Based on Centerline
 Rad. = 100' Delta = 88°11' Tangent = 96.74'
 Arc = 153.77' L.C. = 139.06' Def/Ft. = 17.18860 Min.

Station	Arc	FACE CHORD LENGTHS		Defl.	T. Defl.
		8' Lt.	8' Rt.		
12+37.83	-	-	-	0°00'00"	0°00'00"
13+00.00	18.17'	22.68'	13.81'	5°12'19"	5°12'19"
13+25.00	25.00'	31.17'	18.70'	7°09'43"	12°22'02"
13+50.00	25.00'	31.17'	18.70'	7°09'43"	19°31'45"
13+75.00	25.00'	31.17'	18.70'	7°09'43"	26°41'28"
13+96.40	21.40'	26.70'	16.02'	6°07'50"	32°49'18"
14+00.00	3.60'	4.50'	2.70'	1°01'53"	33°51'11"
14+25.00	25.00'	31.17'	18.70'	7°09'43"	41°00'54"
14+35.60	10.60'	13.24'	7.95'	3°02'12"	44°03'05"

Curve #5
 Curve Data Based on Centerline
 Rad. = 100.00' Delta = 90°37'20" Tangent = 101.16'
 Arc = 158.14' L.C. = 142.29' Def/Ft. = 17.19152 Min.

Station	Arc	FACE CHORD LENGTHS		Defl.	T. Defl.
		8' Lt.	8' Rt.		
11+23.69	-	-	-	0°00'00"	0°00'00"
11+25.00	1.31'	0.98'	1.64'	0°22'31"	0°22'31"
11+50.00	25.00'	18.72'	31.19'	7°09'47"	7°32'19"
11+75.00	25.00'	18.72'	31.19'	7°09'47"	14°42'06"
12+00.00	25.00'	18.72'	31.19'	7°09'47"	21°51'53"
12+10.85	10.85'	8.14'	13.37'	3°06'32"	24°58'25"
12+25.00	14.15'	10.62'	17.69'	4°03'16"	29°01'40"
12+50.00	25.00'	18.72'	31.19'	7°09'47"	36°11'28"
12+75.00	25.00'	18.72'	31.19'	7°09'47"	43°21'15"
12+81.83	6.83'	5.13'	8.54'	1°57'25"	45°18'40"



Scale: 1" = 20'
 = Iron

Adjust water valve
 boxes as needed
 to grade.
 Incidental to 'Site
 Clearing and
 Restoration'.

Contractor to remove
 existing trees, fence, etc.
 as needed to complete
 paving project. Removal
 shall be incidental to bid
 item 'Site Clearing and
 Restoration'.

Street & Station	Location Description	Elevation
Rio Vista 0+37.0, 17.50' Lt.	Adjacent to Fire Hydrant at the Southwest corner of Lot 4, Block C	
W. 62nd St. North 0+20.0, 17.50' Lt.	Adjacent to Fire Hydrant at the Southwest corner of Lot 18, Block A	
Richmond 15+15.62, 17.50' Lt.	Adjacent to Fire Hydrant at the Northeast corner of Lot 1, Block A	
Richmond Ct. 0+37.7, 14.50' Lt.	Adjacent to Fire Hydrant at the Northeast corner of Lot 13, Block A	
Richmond 8+32.84, 17.50' Lt.	Adjacent to Fire Hydrant at the Northeast corner of Lot 9, Block C	
Rio Vista Ct. 0+36.77, 14.50' Lt.	Adjacent to Fire Hydrant at the Northwest corner of Lot 1, Block E	

NOTE: ROLL TYPE CURB & GUTTER TO BE CONSTRUCTED ON THE PAVEMENT SHOWN ON THIS SHEET. TOP OF CURB ELEVATIONS ARE GIVEN FOR FULL HEIGHT CURB.

Baughman Richmond
 STA 11+23.69 TO STA 15+35.62

Richmond Estates 4th Addition

PROJECT NUMBER 472-8495	DESIGN MWS	DRAWN JWH
REVISIONS	APPROVED	DATE 7/05
SCALE Noted		SHEET 11 OF 51

Rio Vista Lot 1.dwg 05-03-2004