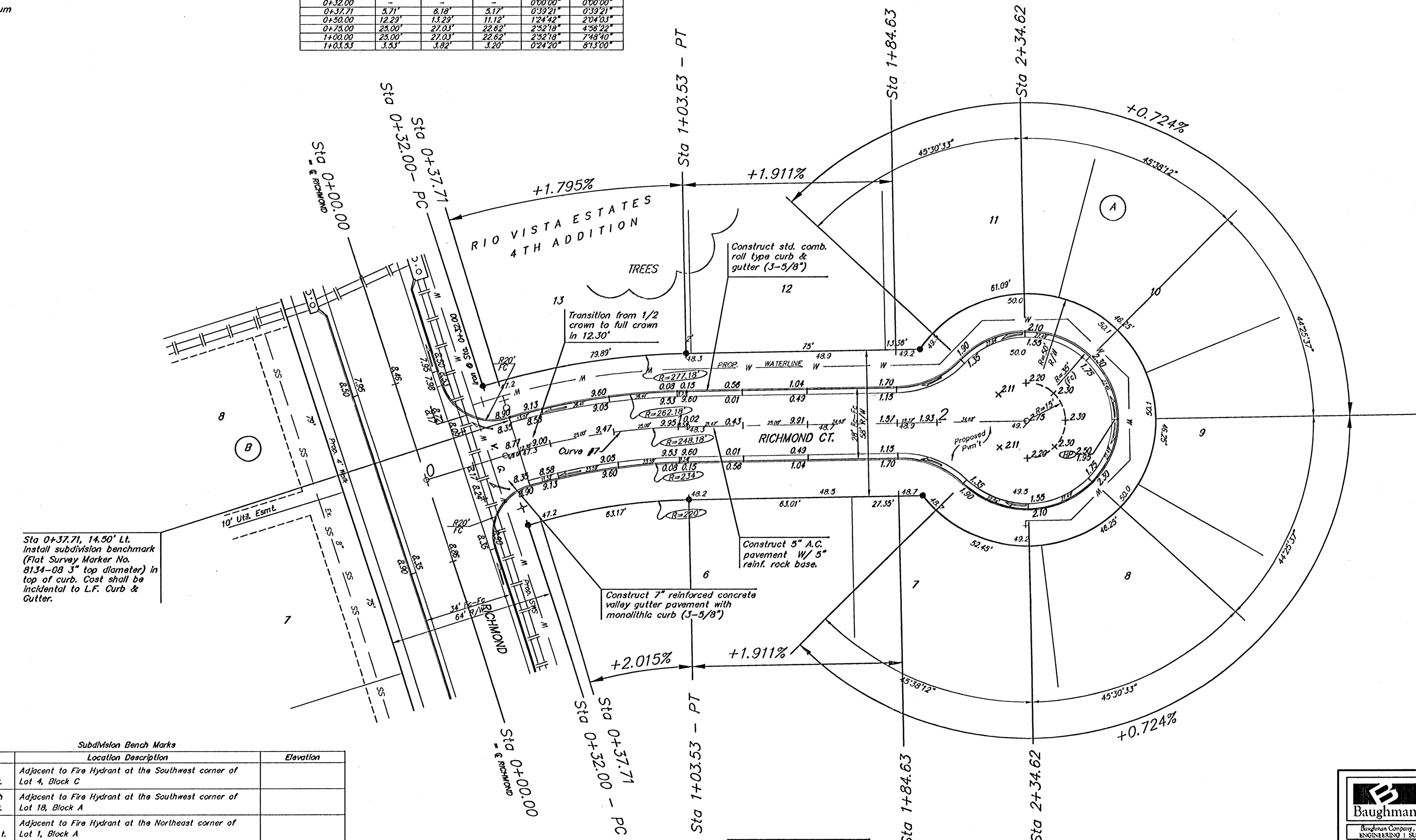
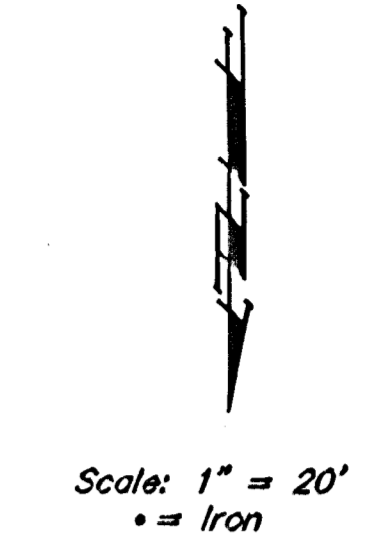


BENCHMARK:
 R.R. SPIKE IN HLP, 150' E. & 30'
 S. OF THE S.W. COR., S.E. 1/4,
 SEC. 12-26-1W.
 ELEV. = 1339.96 M.S.L.
 ELEV. = 151.56 City Datum

"0" IN OPEN, TOP FLANGE OF FIRE
 HYDRANT AT THE S.W. CORNER
 OF 61ST. ST. N. & MERIDIAN AVE.
 ELEV. = 1339.16 M.S.L.
 ELEV. = 151.76 City Datum

Curve #7
 Curve Data Based on Centerline
 Rad. = 248.18' Delta = 16°23'59" Tangent = 35.78'
 Arc = 71.53' L.C. = 70.82' Off Pt. = 6.89210 Min.

Station	FACE CHORD LENGTHS			Defl.	T. Defl.
	Arc	8' Lt.	8' Rt.		
0+32.00	-	-	-	0°00'00"	0°00'00"
0+37.71	5.71'	6.18'	5.17'	0°39'21"	0°39'21"
0+50.00	12.29'	13.29'	11.12'	1°24'42"	2°04'03"
0+75.00	25.00'	27.03'	22.62'	2°52'18"	4°58'22"
1+00.00	25.00'	27.03'	22.62'	2°52'18"	7°49'40"
1+03.53	3.53'	3.82'	3.20'	0°24'20"	8°13'00"



Sta 0+37.71, 14.50' Lt.
 Install subdivision benchmark
 (Flat Survey Marker No.
 8134-08 3" top diameter) in
 top of curb. Cost shall be
 incidental to L.F. Curb &
 gutter.

Subdivision Bench Marks

Street & Station	Location Description	Elevation
Rio Vista 0+37.0, 17.50' Lt.	Adjacent to Fire Hydrant at the Southwest corner of Lot 4, Block C	
W. 62nd St. North 0+20.0, 17.50' Lt.	Adjacent to Fire Hydrant at the Southwest corner of Lot 18, Block A	
Richmond 15+15.62, 17.50' Lt.	Adjacent to Fire Hydrant at the Northeast corner of Lot 1, Block A	
Richmond Ct. 0+37.71, 14.50' Lt.	Adjacent to Fire Hydrant at the Northeast corner of Lot 13, Block A	
Richmond 8+32.84, 17.50' Lt.	Adjacent to Fire Hydrant at the Northeast corner of Lot 9, Block C	
Rio Vista Ct. 0+36.77, 14.50' Lt.	Adjacent to Fire Hydrant at the Northwest corner of Lot 1, Block E	

Contractor to remove existing trees, fence, etc. as needed to complete paving project. Removal shall be incidental to bid item 'Site Clearing and Restoration'.

Adjust water valve boxes as needed to grade. Incidental to 'Site Clearing and Restoration'.

NOTE: ROLL TYPE CURB & GUTTER TO BE CONSTRUCTED ON THE PAVEMENT SHOWN ON THIS SHEET. TOP OF CURB ELEVATIONS ARE GIVEN FOR FULL HEIGHT CURB.

Baughman Richmond Ct.
 STA0+00 TO STA 2+34.62

Richmond Ct. Estates 4th Addition

Richmond Company, P.A. 315 Ellis St. Wichita, KS 67211 P 316-267271 F 316-262149
 ENGINEERING | SURVEYING | PLANNING | LANDSCAPE ARCHITECTURE

PROJECT NUMBER 472-84056	DESIGN MVS	DRAWN JWH
REVISIONS	APPROVED	DATE 7/05
	SCALE Noted	SHEET 12 OF 51

Rio Vista User1.dwg 05-03-E204