

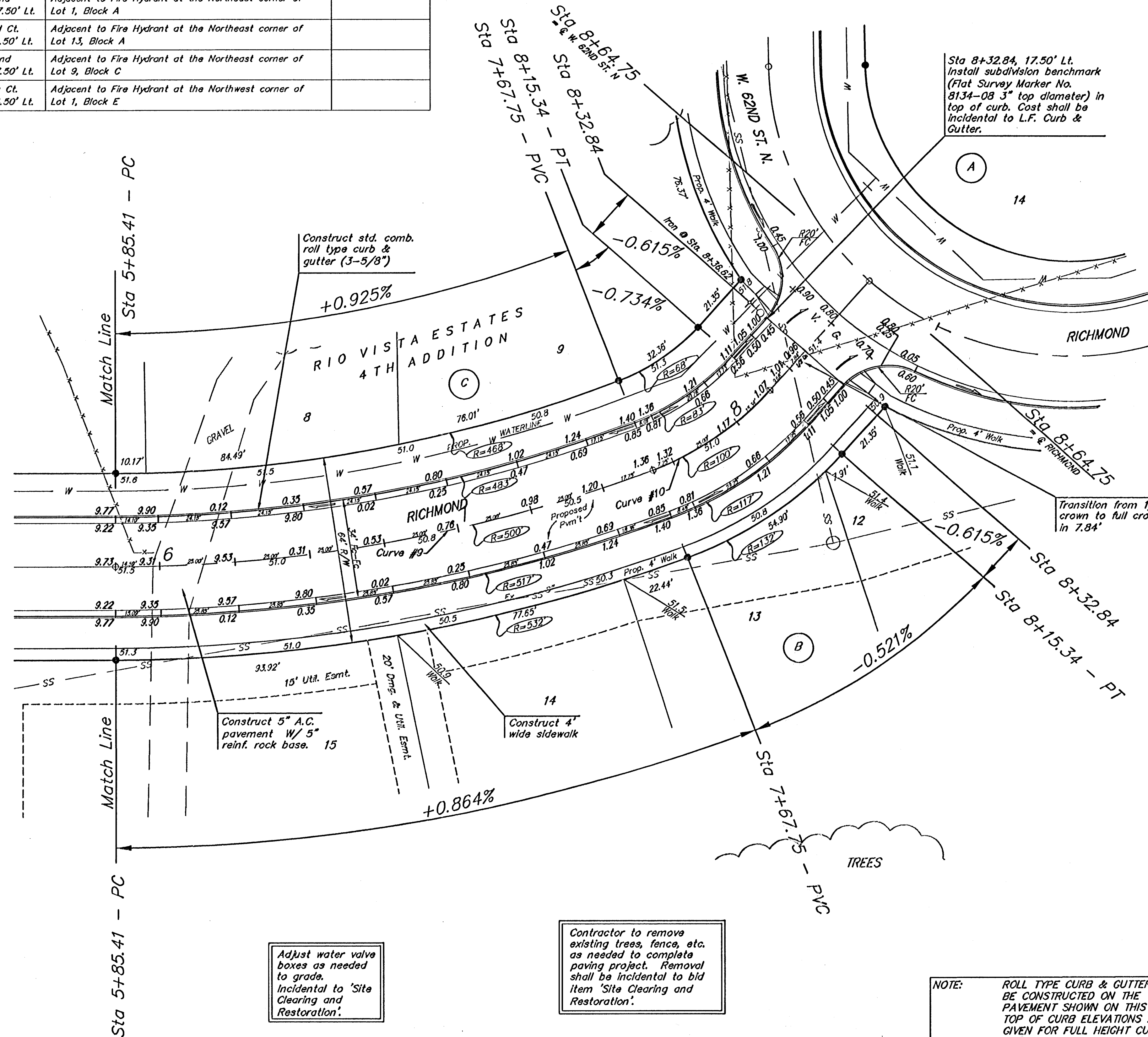
BENCHMARK:
 R.R. SPIKE IN HLP, 150' E. & 30'
 S. OF THE S.W. COR., S.E. 1/4,
 SEC. 12-26-1W.
 ELEV. = 1338.96 M.S.L.
 ELEV. = 151.56 City Datum

"O" IN OPEN, TOP FLANGE OF FIRE
 HYDRANT AT THE S.W. CORNER
 OF 61ST. ST. N. & MERIDIAN AVE.
 ELEV. = 1339.16 M.S.L.
 ELEV. = 151.76 City Datum

Subdivision Bench Marks		
Street & Station	Location Description	Elevation
Rio Vista 0+37.0, 17.50' Lt.	Adjacent to Fire Hydrant at the Southwest corner of Lot 4, Block C	
W. 62nd St. North 0+20.0, 17.50' Lt.	Adjacent to Fire Hydrant at the Southwest corner of Lot 18, Block A	
Richmond 15+15.62, 17.50' Lt.	Adjacent to Fire Hydrant at the Northeast corner of Lot 1, Block A	
Richmond Ct. 0+37.71, 14.50' Lt.	Adjacent to Fire Hydrant at the Northeast corner of Lot 13, Block A	
Richmond 8+32.84, 17.50' Lt.	Adjacent to Fire Hydrant at the Northeast corner of Lot 9, Block C	
Rio Vista Ct. 0+36.77, 14.50' Lt.	Adjacent to Fire Hydrant at the Northwest corner of Lot 1, Block E	



Scale: 1" = 20'
 = Iron



Curve #10
 Curve Data Based on Centerline
 Rad. = 100.00' Delta = 27'16.2" Tangent = 24.29'
 Arc = 47.59' L.C. = 47.21' Del/Ft. = 17.18883 Min.

Station	Arc	FACE CHORD LENGTHS		Defl.	T. Defl.
		8' Lt.	8' Rt.		
7+67.75	-	-	-	0'00"00"	0'00"00"
7+75.00	7.25'	5.45'	9.07'	2'04'37"	2'04'37"
8+00.00	25.00'	18.74'	31.21'	7'09'43"	9'14'20"
8+15.34	15.34'	11.52'	19.18'	4'23'41"	13'38'01"

Curve #9
 Curve Data Based on Centerline
 Rad. = 500' Delta = 20'46.7" Tangent = 91.63'
 Arc = 182.34' L.C. = 180.25' Del/Ft. = 3.41701 Min.

Station	Arc	FACE CHORD LENGTHS		Defl.	T. Defl.
		8' Lt.	8' Rt.		
5+85.41	-	-	-	0'00"00"	0'00"00"
6+00.00	14.59'	13.78'	15.23'	0'49'51"	0'49'51"
6+25.00	25.00'	23.60'	26.09'	1'25'26"	2'15'17"
6+50.00	25.00'	23.60'	26.09'	1'25'26"	3'40'42"
6+75.00	25.00'	23.60'	26.09'	1'25'26"	5'06'08"
7+00.00	25.00'	23.60'	26.09'	1'25'26"	6'31'33"
7+25.00	25.00'	23.60'	26.09'	1'25'26"	7'56'59"
7+50.00	25.00'	23.60'	26.09'	1'25'26"	9'22'24"
7+67.75	17.75'	16.76'	18.52'	1'00'59"	10'23'03"

Baughman Richmond
 STA 5+85.41 TO STA 8+64.75

Richmond Estates 4th Addition

PROJECT NUMBER: 472-84056
 REVISIONS: [Blank]
 DESIGN: MWS
 DRAWN: JWH
 APPROVED: [Blank]
 DATE: 7/05
 SCALE: Noted
 SHEET: 15 OF 51

Rio Vista Vtr1.dwg 05-03-E204

NOTE: ROLL TYPE CURB & GUTTER TO BE CONSTRUCTED ON THE PAVEMENT SHOWN ON THIS SHEET. TOP OF CURB ELEVATIONS ARE GIVEN FOR FULL HEIGHT CURB.