

**BENCHMARK:**  
 R.R. SPIKE IN HLP, 150' E. & 30'  
 S. OF THE S.W. COR., S.E. 1/4,  
 SEC. 12-26-1W  
 ELEV. = 1339.96 M.S.L.  
 ELEV. = 151.56 City Datum

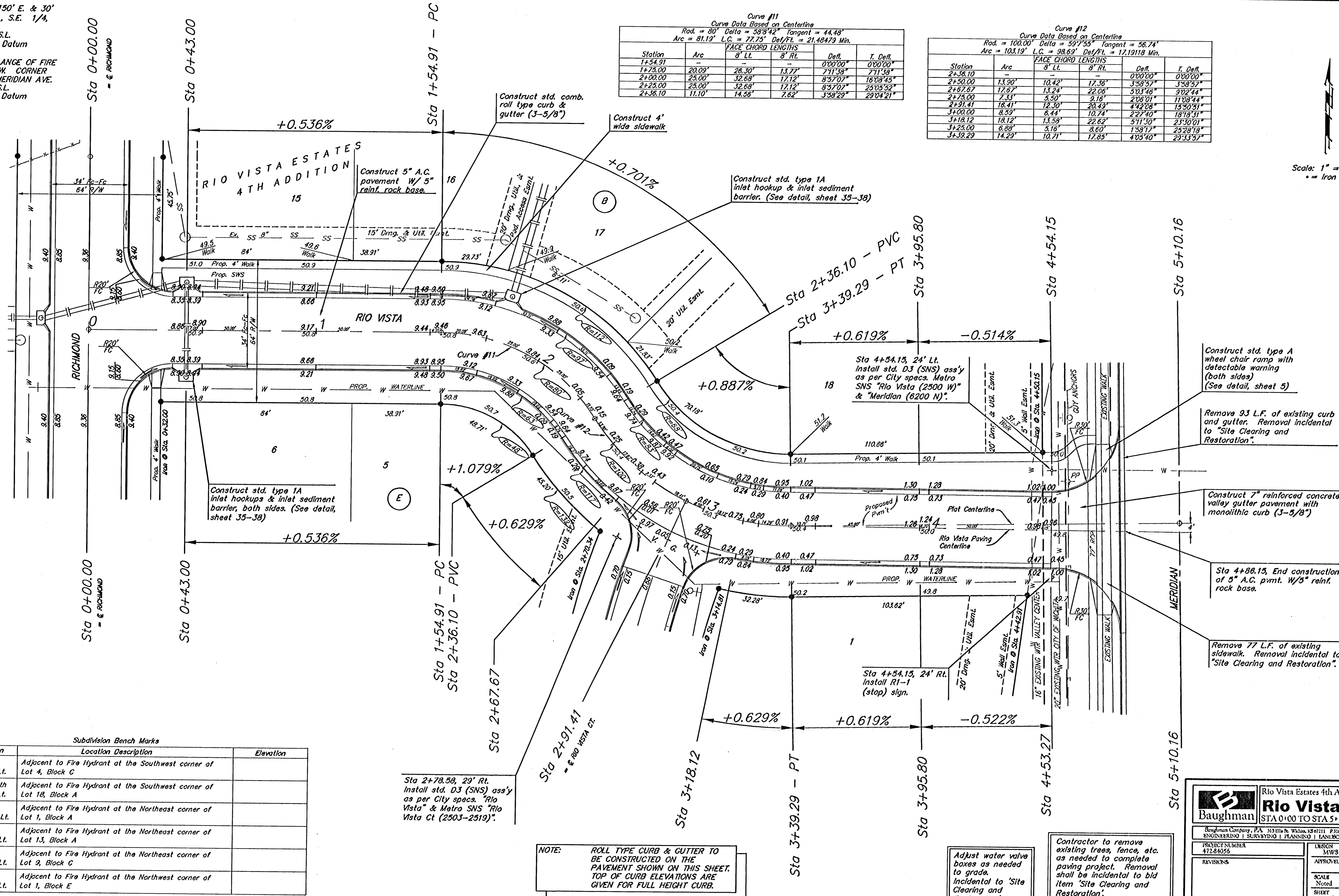
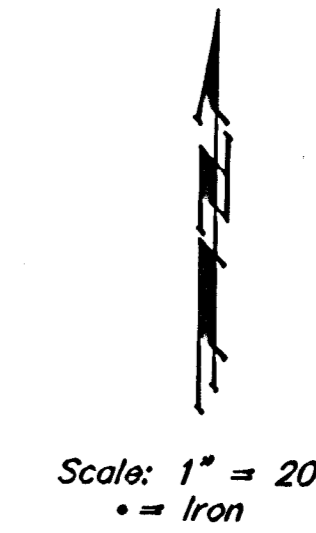
"O" IN OPEN, TOP FLANGE OF FIRE  
 HYDRANT AT THE S.W. CORNER  
 OF 61ST. ST. N. & MERIDIAN AVE.  
 ELEV. = 1339.16 M.S.L.  
 ELEV. = 151.76 City Datum

Curve #11  
 Curve Data Based on Centerline  
 Rad. = 80' Delta = 58°42' Tangent = 44.48'  
 Arc = 81.19' L.C. = 77.75' Del/Ft. = 21.48473 Min.

Station	Arc	FACE CHORD LENGTHS		Defl.	T. Defl.
		8' Lt.	8' Rt.		
1+54.91	-	-	-	0°00'00"	0°00'00"
1+75.00	20.09'	26.30'	13.77'	7°11'59"	7°11'59"
2+00.00	25.00'	32.68'	17.12'	8°57'07"	16°09'45"
2+25.00	25.00'	32.68'	17.12'	8°57'07"	25°05'52"
2+50.00	11.10'	14.56'	7.62'	3°58'29"	29°04'21"

Curve #12  
 Curve Data Based on Centerline  
 Rad. = 100.00' Delta = 59°55' Tangent = 56.74'  
 Arc = 103.19' L.C. = 98.69' Del/Ft. = 17.19118 Min.

Station	Arc	FACE CHORD LENGTHS		Defl.	T. Defl.
		8' Lt.	8' Rt.		
2+36.10	-	-	-	0°00'00"	0°00'00"
2+50.00	13.90'	10.42'	17.36'	3°58'57"	3°58'57"
2+67.87	17.87'	13.24'	22.06'	5°03'46"	9°02'44"
2+75.00	7.13'	5.50'	9.16'	2°06'01"	11°08'44"
2+91.41	16.41'	12.30'	20.43'	4°42'08"	15°50'31"
3+00.00	8.59'	6.44'	10.74'	2°27'40"	18°18'41"
3+18.12	18.12'	13.58'	22.62'	5°11'50"	23°30'01"
3+25.00	6.88'	5.16'	8.60'	1°58'17"	25°28'18"
3+39.29	14.29'	10.71'	17.85'	4°03'40"	29°33'57"



Subdivision Bench Marks

Street & Station	Location Description	Elevation
Rio Vista 0+37.0, 17.50' Lt.	Adjacent to Fire Hydrant at the Southwest corner of Lot 4, Block C	
W. 62nd St. North 0+20.0, 17.50' Lt.	Adjacent to Fire Hydrant at the Southwest corner of Lot 18, Block A	
Richmond 15+15.62, 17.50' Lt.	Adjacent to Fire Hydrant at the Northeast corner of Lot 1, Block A	
Richmond Ct. 0+37.71, 14.50' Lt.	Adjacent to Fire Hydrant at the Northeast corner of Lot 13, Block A	
Richmond 8+32.84, 17.50' Lt.	Adjacent to Fire Hydrant at the Northeast corner of Lot 9, Block C	
Rio Vista Ct. 0+36.77, 14.50' Lt.	Adjacent to Fire Hydrant at the Northwest corner of Lot 1, Block E	

**Baughman** Rio Vista Estates 4th Addition  
 STA 0+00 TO STA 5+10.16

Baughman Company, P.A. 315 Ellis & W. Main, Ste 11111 P.O. Box 657711 Birmingham, AL 35265-0711  
 ENGINEERING | SURVEYING | PLANNING | LANDSCAPE ARCHITECTURE

PROJECT NUMBER: 472-84056  
 DESIGN: MWS  
 DRAWN: JWH  
 APPROVED: DATE: 7/05  
 REVISIONS:  
 SCALE: Noted  
 SHEET: 16 OF 51

Rio Vista User.dwg 05-03-E204