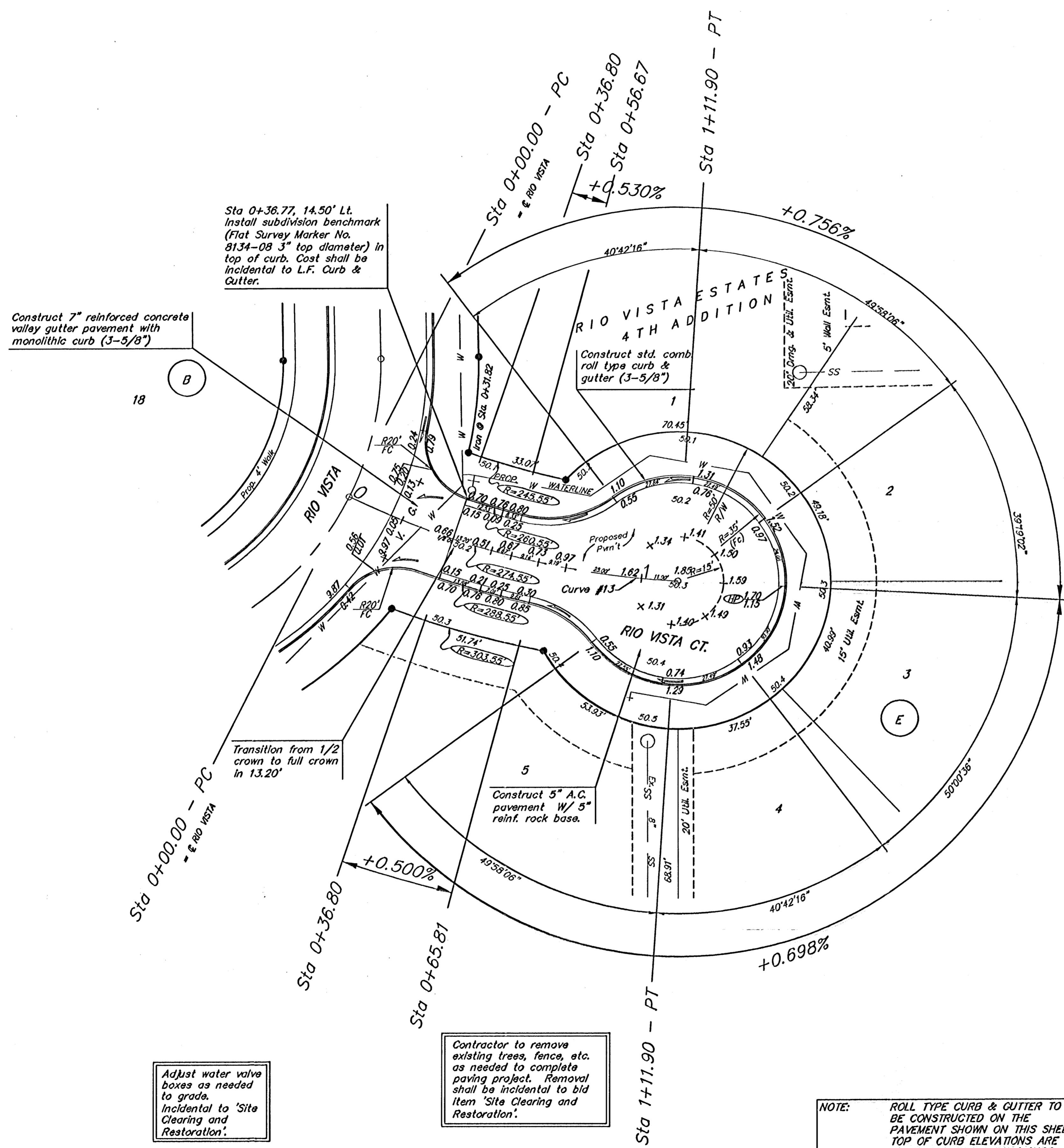
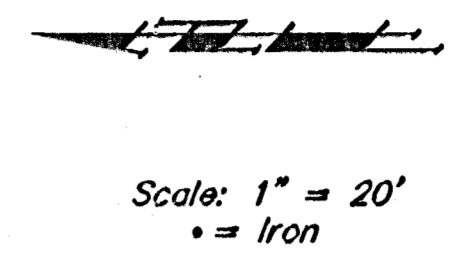


BENCHMARK:
 R.R. SPIKE IN HLP, 150' E. & 30'
 S. OF THE S.W. COR., S.E. 1/4,
 SEC. 12-26-1W.
 ELEV. = 1338.96 M.S.L.
 ELEV. = 131.56 City Datum

"O" IN OPEN, TOP FLANGE OF FIRE
 HYDRANT AT THE S.W. CORNER
 OF 61ST. ST. N. & MERIDIAN AVE.
 ELEV. = 1339.16 M.S.L.
 ELEV. = 131.76 City Datum



Subdivision Bench Marks		
Street & Station	Location Description	Elevation
Rio Vista 0+37.0, 17.50' Lt.	Adjacent to Fire Hydrant at the Southwest corner of Lot 4, Block C	
W. 62nd St. North 0+20.0, 17.50' Lt.	Adjacent to Fire Hydrant at the Southwest corner of Lot 18, Block A	
Richmond 15+15.62, 17.50' Lt.	Adjacent to Fire Hydrant at the Northeast corner of Lot 1, Block A	
Richmond Ct. 0+37.71, 14.50' Lt.	Adjacent to Fire Hydrant at the Northeast corner of Lot 13, Block A	
Richmond 8+32.84, 17.50' Lt.	Adjacent to Fire Hydrant at the Northeast corner of Lot 9, Block C	
Rio Vista Ct. 0+36.77, 14.50' Lt.	Adjacent to Fire Hydrant at the Northwest corner of Lot 1, Block E	

Curve #13
 Curve Data Based on Centerline
 Rad. = 274.55' Delta = 22°48'26" Tangent = 55.38'
 Arc = 111.90' L.C. = 108.57' Del/Ft. = 8.11434 Min.

Station	Arc	FACE CHORD LENGTHS		D.M.	T. D.M.
		B' Lt.	B' Rt.		
0+00.00	-	-	-	0°00'00"	0°00'00"
0+25.00	25.00'	22.45'	26.18'	2°32'52"	2°32'52"
0+36.80	11.80'	10.60'	12.45'	1°20'09"	3°43'01"
0+50.00	13.20'	11.86'	13.92'	1°20'43"	5°05'44"
0+56.67	6.67'	5.99'	7.04'	0°40'47"	5°46'31"
0+65.81	9.14'	8.21'	9.64'	0°35'53"	6°42'24"
0+75.00	9.19'	8.26'	9.69'	0°36'12"	7°38'35"
1+00.00	25.00'	22.45'	26.36'	2°32'52"	10°11'27"
1+11.90	11.90'	10.69'	12.55'	1°24'48"	11°24'13"

Adjust water valve boxes as needed to grade. Incidental to 'Site Clearing and Restoration'.

Contractor to remove existing trees, fence, etc. as needed to complete paving project. Removal shall be incidental to bid item 'Site Clearing and Restoration'.

NOTE: ROLL TYPE CURB & GUTTER TO BE CONSTRUCTED ON THE PAVEMENT SHOWN ON THIS SHEET. TOP OF CURB ELEVATIONS ARE GIVEN FOR FULL HEIGHT CURB.

Baughman Rio Vista Estates 4th Addition
Rio Vista Ct.
 STA 0+00 TO STA 1+11.90

Baughman Company, P.A. 315 E. 5th St. Wichita, KS 67211 P:316-262-7771 F:316-262-0149
 ENGINEERING | SURVEYING | PLANNING | LANDSCAPE ARCHITECTURE

PROJECT NUMBER: 47284056
 REVISIONS: [Blank]

DESIGN: MWS
 DRAWN: JWH
 APPROVED: [Blank]
 DATE: 7/05

SCALE: Noted
 SHEET: 17 OF 51

Rio Vista Vtbl.dwg 05-03-E204