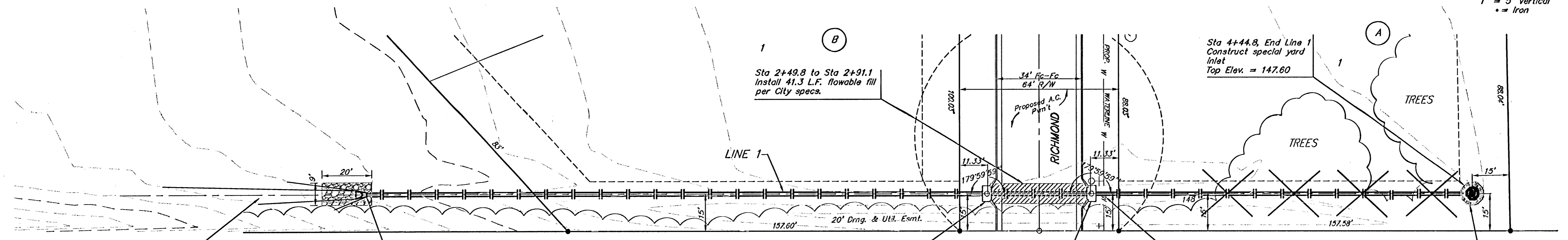


BENCHMARK:
 R.R. SPIKE IN HLP, 150' E. & 30'
 S. OF THE S.W. COR., S.E. 1/4,
 SEC. 12-26-1W.
 ELEV. = 1338.96 M.S.L.
 ELEV. = 151.58 City Datum

"0" IN OPEN, TOP FLANGE OF FIRE
 HYDRANT AT THE S.W. CORNER
 OF 61ST. ST. N. & MERIDIAN AVE.
 ELEV. = 1339.16 M.S.L.
 ELEV. = 151.78 City Datum

Scale: 1" = 20' Horizontal
 1" = 5' Vertical
 • = Iron



Grade ditch to drain from
 end section to river.
 incidental to sws pipe.

Sta 0+00, Line 1
 Begin construction of
 18" RCP.
 1 - 18" RC Headwall
 20.0 S.Y. light stone
 rip-rap.

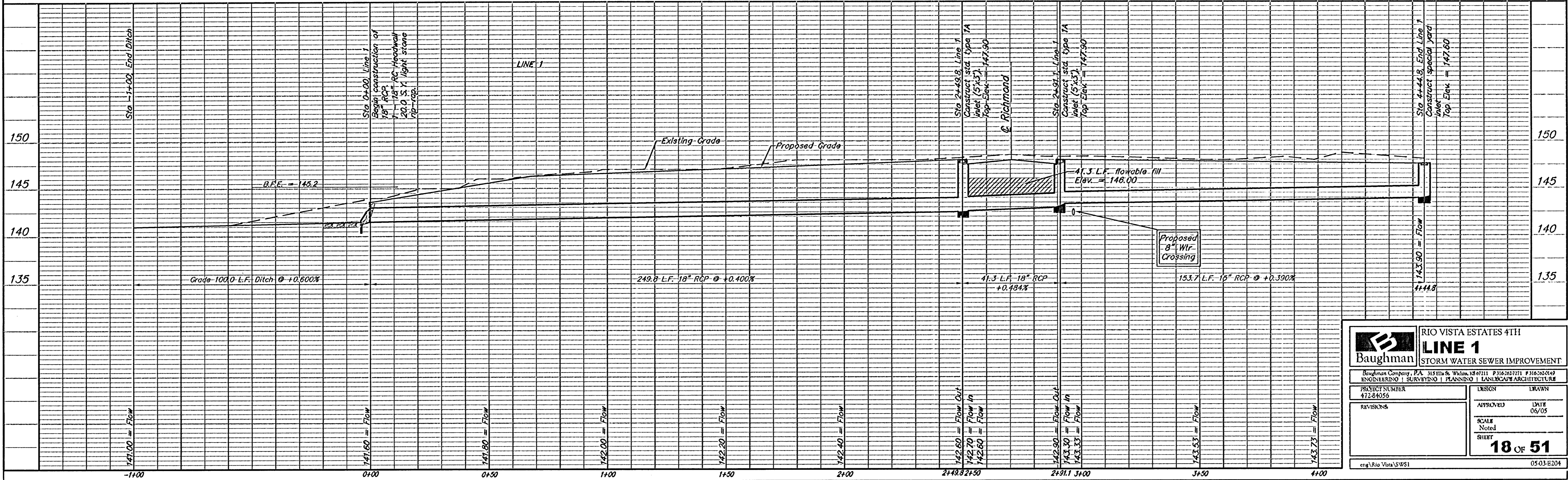
Sta 2+49.8, Line 1
 Construct std. type 1A
 inlet (5'x3').
 Top Elev. = 147.90

Sta 2+91.1, Line 1
 Construct std. type 1A
 inlet (5'x3').
 Top Elev. = 147.90

Proposed
 8" W/F
 Crossing

Install hay bale
 sediment barrier per
 detail, sheet 35-38.

⊗ Denotes Trees to be
 Removed by the
 Storm Sewer Contractor



		RIO VISTA ESTATES 4TH	
		LINE 1	
STORM WATER SEWER IMPROVEMENT		Baughman Company, P.A. 315 Ellis & Widom, MS 67111 P 316-582-7771 F 316-262-0149 ENGINEERING SURVEYING PLANNING LANDSCAPE ARCHITECTURE	
PROJECT NUMBER 472-84056	DESIGN	DRAWN	
REVISIONS	APPROVED	DATE	06/05
	SCALE	Noted	
	SHEET	18 OF 51	
eng/Rio Vista/SWS1		05-03-E204	