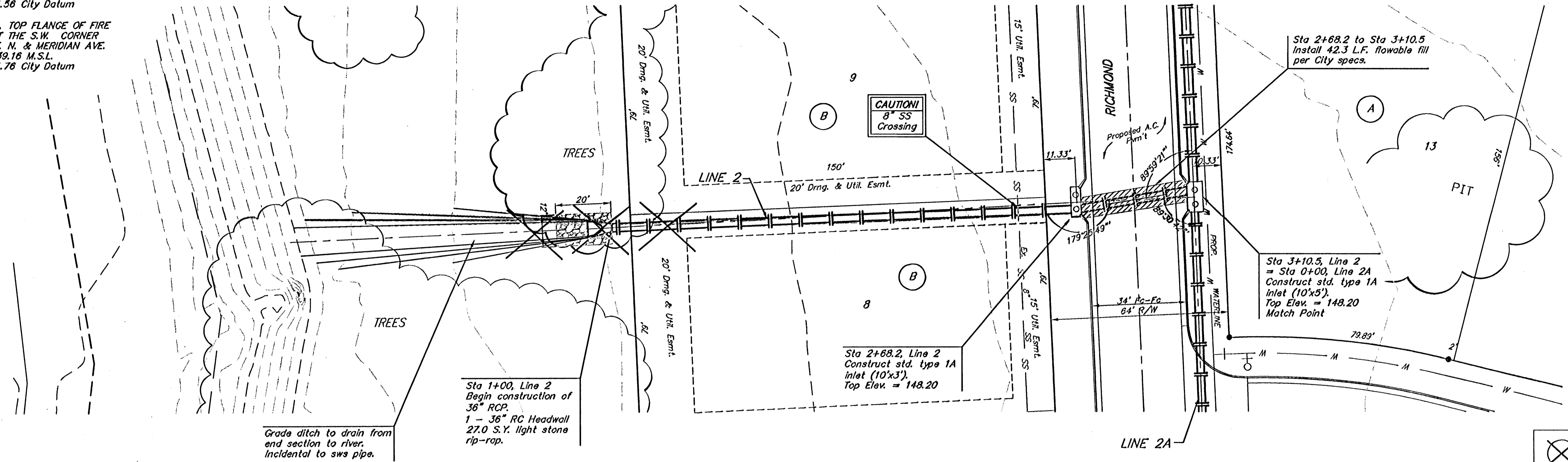


**BENCHMARK:**  
 R.R. SPIKE IN HLP, 150' E. & 30'  
 S. OF THE S.W. COR., S.E. 1/4,  
 SEC. 12-26-1W.  
 ELEV. = 1338.96 M.S.L.  
 ELEV. = 151.56 City Datum

"0" IN OPEN, TOP FLANGE OF FIRE  
 HYDRANT AT THE S.W. CORNER  
 OF 61ST. ST. N. & MERIDIAN AVE.  
 ELEV. = 1339.16 M.S.L.  
 ELEV. = 151.76 City Datum

Scale: 1" = 20' Horizontal  
 1" = 5' Vertical  
 • = Iron



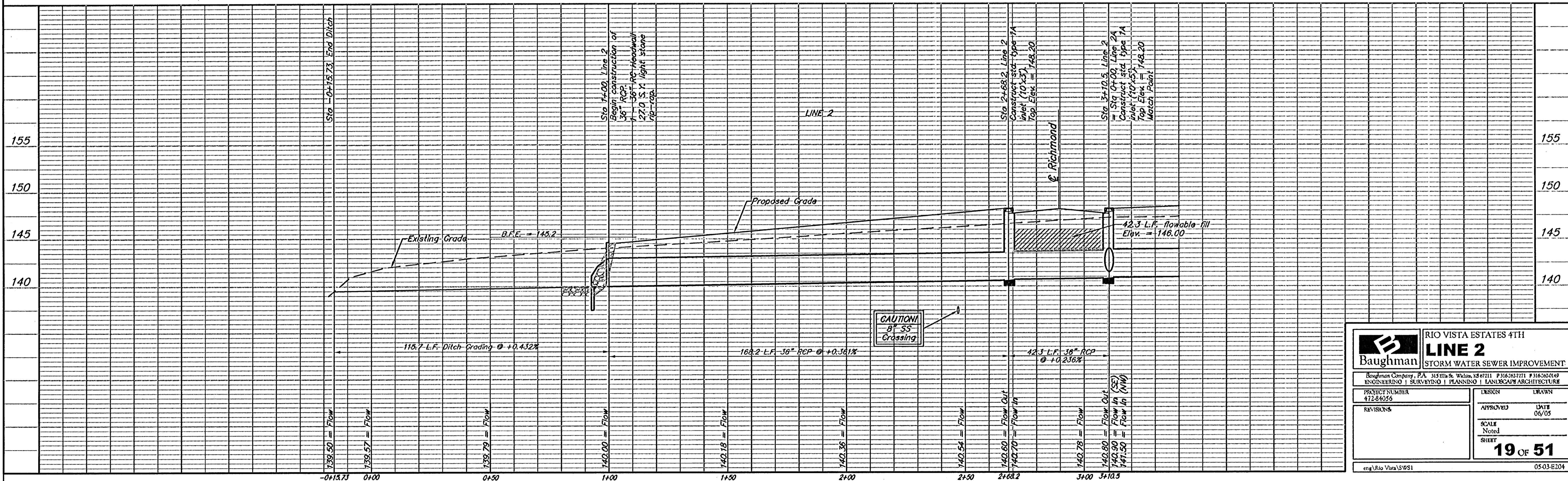
Grade ditch to drain from  
 end section to river.  
 Incidental to sww pipe.

Sta 1+00, Line 2  
 Begin construction of  
 36" RCP.  
 1 - 36" RC Headwall  
 27.0 S.Y. light stone  
 rip-rap.

Sta 2+68.2, Line 2  
 Construct std. type 1A  
 inlet (10'x3').  
 Top Elev. = 148.20

Sta 3+10.5, Line 2  
 = Sta 0+00, Line 2A  
 Construct std. type 1A  
 inlet (10'x5').  
 Top Elev. = 148.20  
 Match Point

Denotes Trees to be  
 Removed by the  
 Storm Sewer Contractor



	RIO VISTA ESTATES 4TH
	<b>LINE 2</b>
STORM WATER SEWER IMPROVEMENT	
<small>Baughman Company, P.A. 315 5th &amp; Walnut, LS 67111 P 316-262-0149        ENGINEERING   SURVEYING   PLANNING   LANDSCAPE ARCHITECTURE</small>	
PROJECT NUMBER 47284056	DESIGN DRAWN
REVISIONS	APPROVED DATE 06/05
	SCALE Noted
	SHEET <b>19 OF 51</b>
<small>eng\Rio Vista\SWSI 05-03-E104</small>	