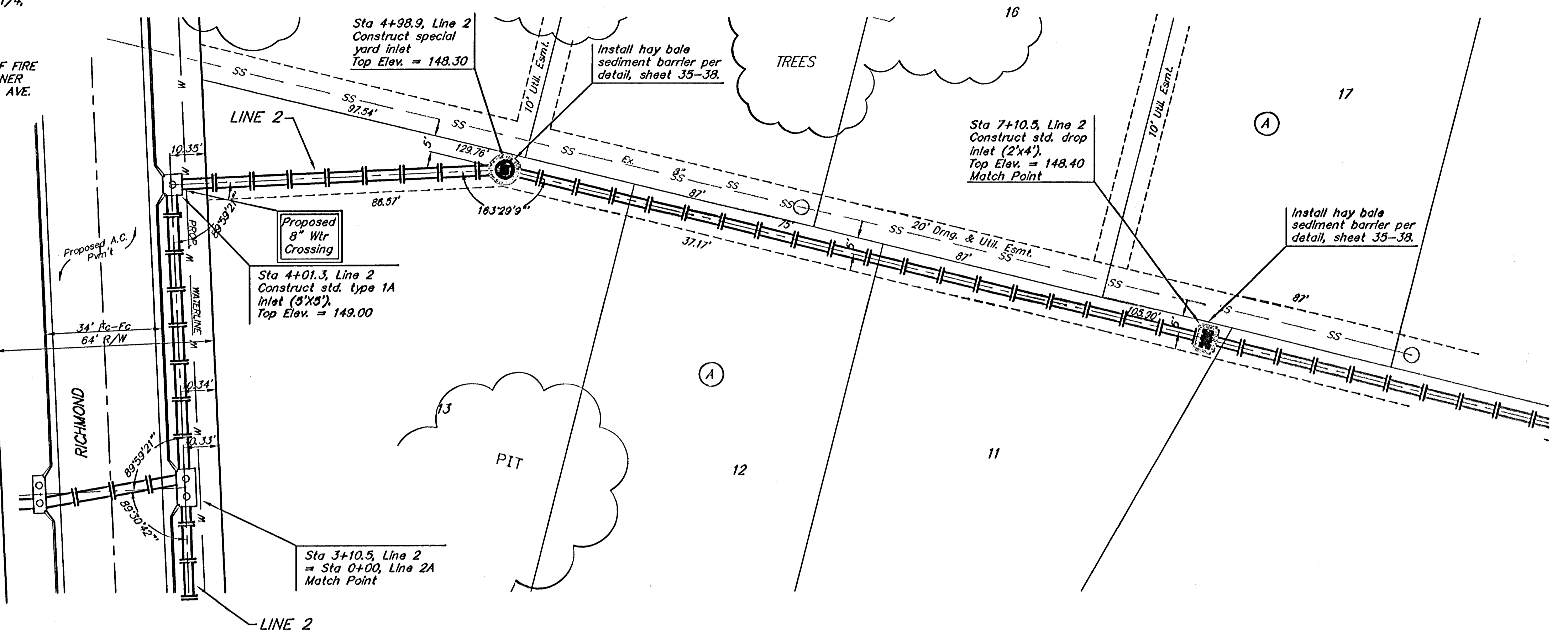


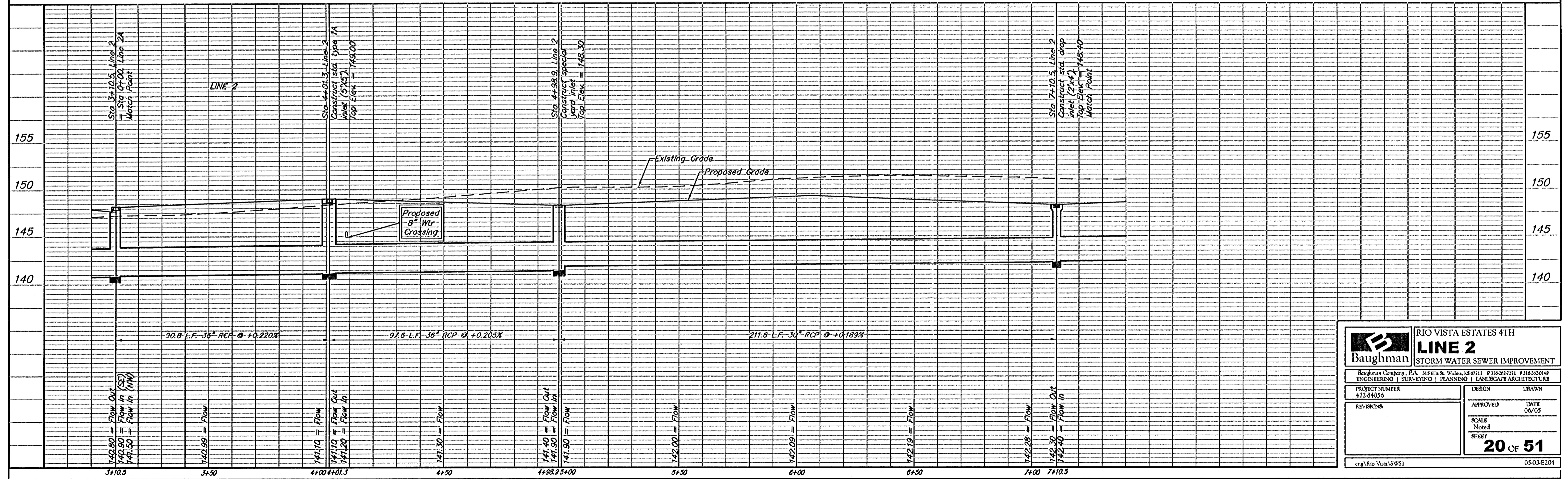
BENCHMARK:
 R.R. SPIKE IN HLP, 150' E. & 30'
 S. OF THE S.W. COR., S.E. 1/4,
 SEC. 12-26-1W.
 ELEV. = 1338.96 M.S.L.
 ELEV. = 151.56 City Datum

*0" IN OPEN, TOP FLANGE OF FIRE
 HYDRANT AT THE S.W. CORNER
 OF 61ST ST. N. & MERIDIAN AVE.
 ELEV. = 1339.16 M.S.L.
 ELEV. = 151.76 City Datum



Scale: 1" = 20' Horizontal
 1" = 5' Vertical
 • = Iron

⊗ Denotes Trees to be Removed by the Storm Sewer Contractor



	RIO VISTA ESTATES 4TH	
	LINE 2	
STORM WATER SEWER IMPROVEMENT		
<small>Baughman Company, P.A. 315 5th & Walnut, Ste 4111 P 315-527-7771 F 315-527-0149 ENGINEERING SURVEYING PLANNING LANDSCAPE ARCHITECTURE</small>		
PROJECT NUMBER 47284056	DESIGN	DRAWN
REVISIONS	APPROVED	DATE
	Noted	06/05
	SHEET	20 OF 51
eng\Rio Vista\SWSI		05-03-E204