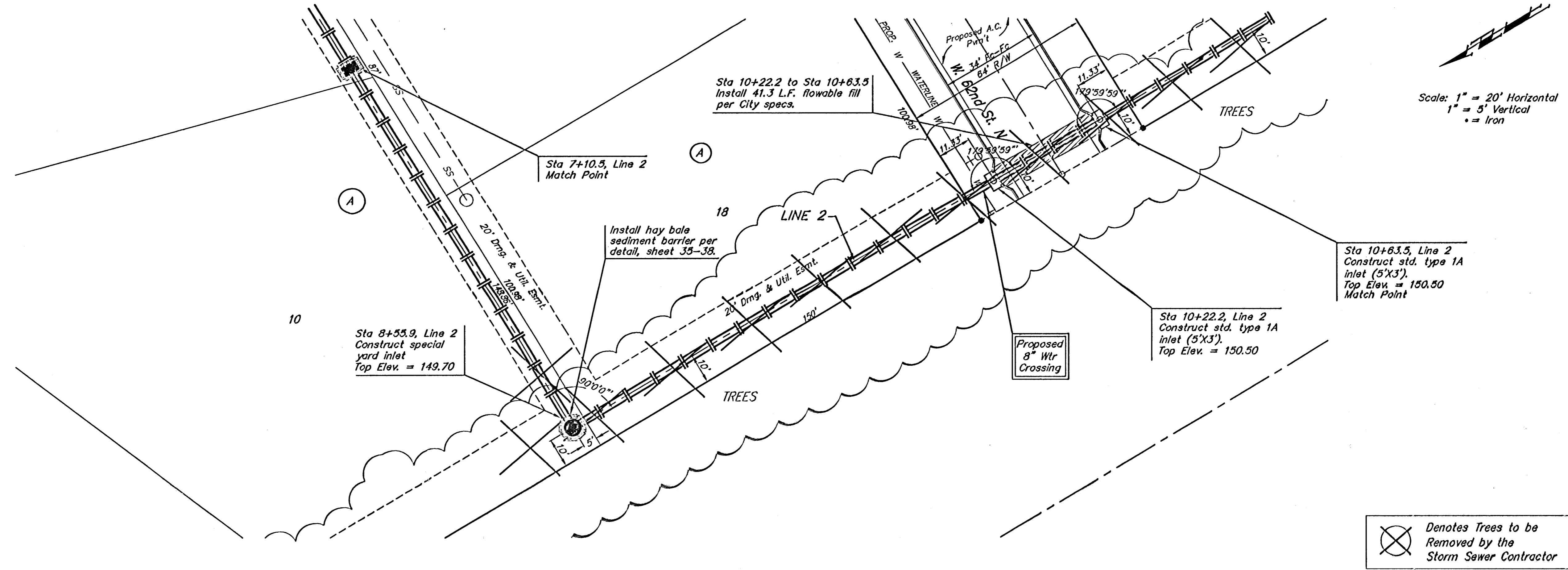
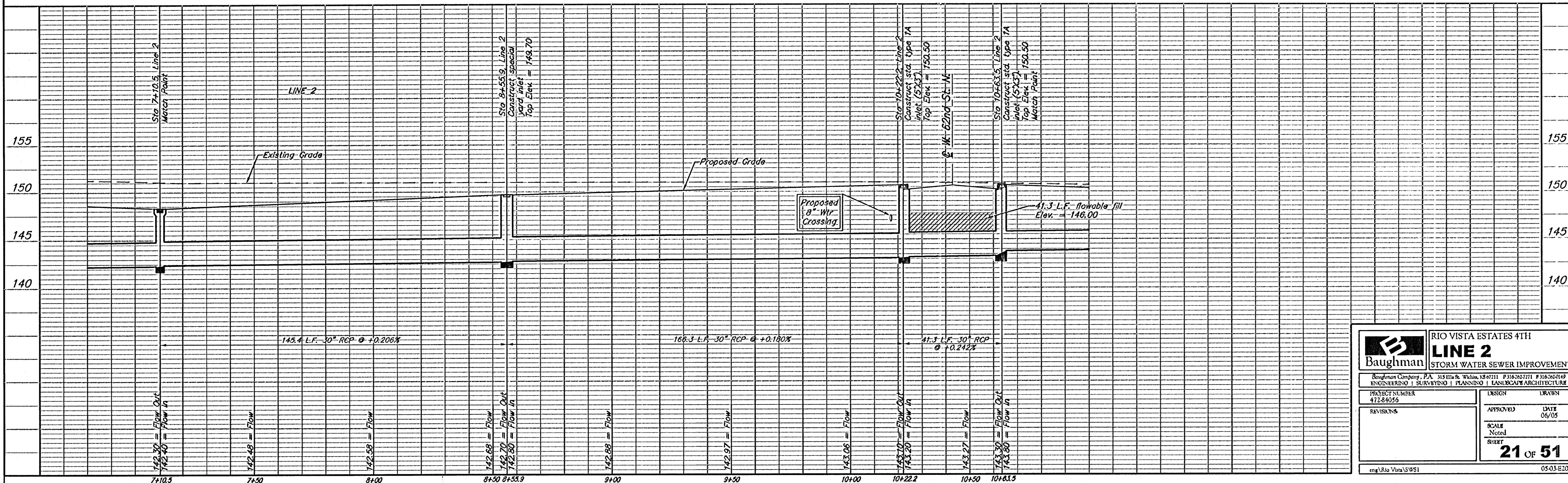


BENCHMARK:  
 R.R. SPIKE IN HLP, 150' E. & 30'  
 S. OF THE S.W. COR., S.E. 1/4,  
 SEC. 12-26-11W.  
 ELEV. = 1339.96 M.S.L.  
 ELEV. = 151.56 City Datum

"O" IN OPEN, TOP FLANGE OF FIRE  
 HYDRANT AT THE S.W. CORNER  
 OF 61ST ST. N. & MERIDIAN AVE.  
 ELEV. = 1339.16 M.S.L.  
 ELEV. = 151.76 City Datum



Denotes Trees to be  
 Removed by the  
 Storm Sewer Contractor



|                               |                |   |  |
|-------------------------------|----------------|---|--|
|                               |                | RIO VISTA ESTATES 4TH   |  |
|                               |                | <b>LINE 2</b>   |  |
| STORM WATER SEWER IMPROVEMENT |                | Baughman Company, P.A. 315 Elm & Wilson, St. Louis, MO 63101 P 316-287-7171 F 316-287-0149<br>ENGINEERING   SURVEYING   PLANNING   LANDSCAPE ARCHITECTURE |  |
| PROJECT NUMBER<br>472-84050   | DESIGN         | DRAWN   |  |
| REVISIONS                     | APPROVED       | DATE<br>06/05   |  |
|                               | SCALE<br>Noted | SHEET<br><b>21 OF 51</b>  |  |
| eng\Rio Vista\5051            |                | 05-03-E204  |  |