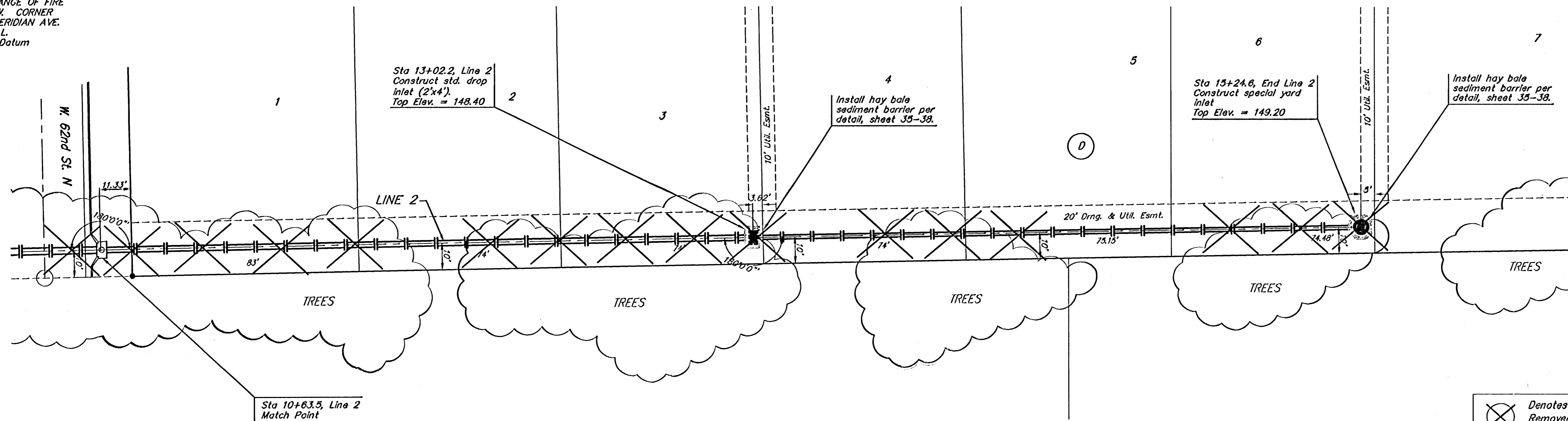


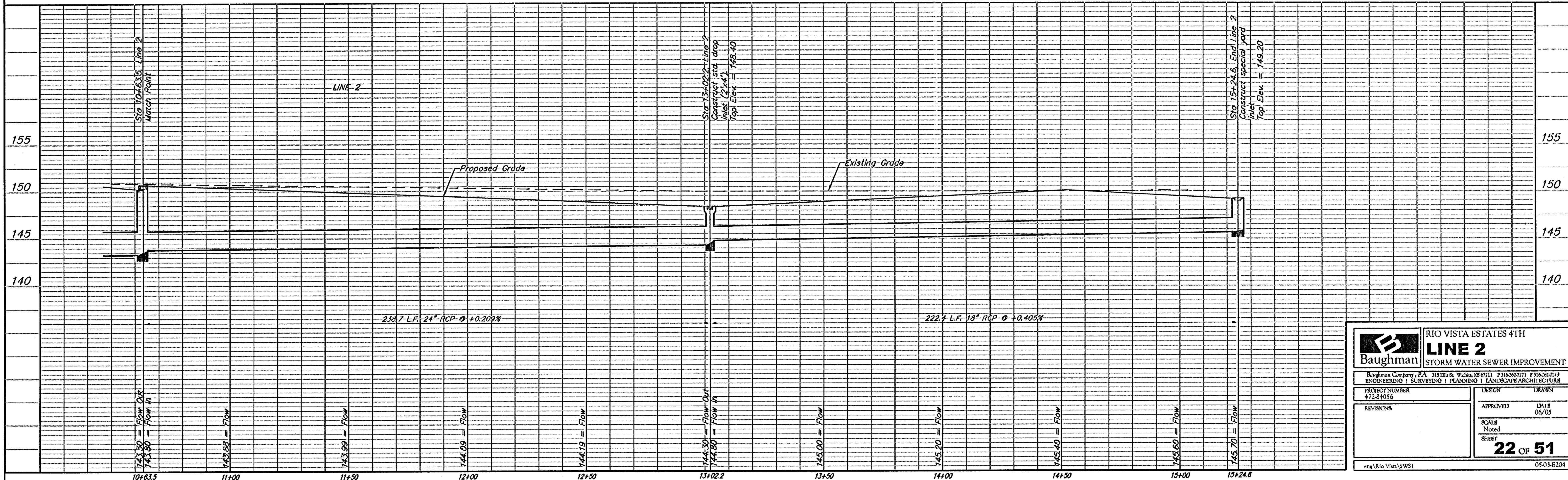
**BENCHMARK:**  
 R.R. SPIKE IN HLP, 150' E. & 30'  
 S. OF THE S.W. COR., S.E. 1/4,  
 SEC. 12-26-1W.  
 ELEV. = 1338.96 M.S.L.  
 ELEV. = 151.56 City Datum

"0" IN OPEN, TOP FLANGE OF FIRE  
 HYDRANT AT THE S.W. CORNER  
 OF 61ST. ST. N. & MERIDIAN AVE.  
 ELEV. = 1339.16 M.S.L.  
 ELEV. = 151.76 City Datum

Scale: 1" = 20' Horizontal  
 1" = 5' Vertical  
 • = Iron



⊗ Denotes Trees to be Removed by the Storm Sewer Contractor



<b>Baughman</b>		RIO VISTA ESTATES 4TH <b>LINE 2</b> STORM WATER SEWER IMPROVEMENT	
Baughman Company, P.A. 3150 S. Wilkes Barre Blvd. #316-2010 ENGINEERING   SURVEYING   PLANNING   LANDSCAPE ARCHITECTURE			
PROJECT NUMBER 472-84055	DESIGN	DRAWN	
REVISIONS	APPROVED	DATE 06/05	
	SCALE None	SHEET <b>22 OF 51</b>	
eng:Rio Vista SWS1		05-03-E204	