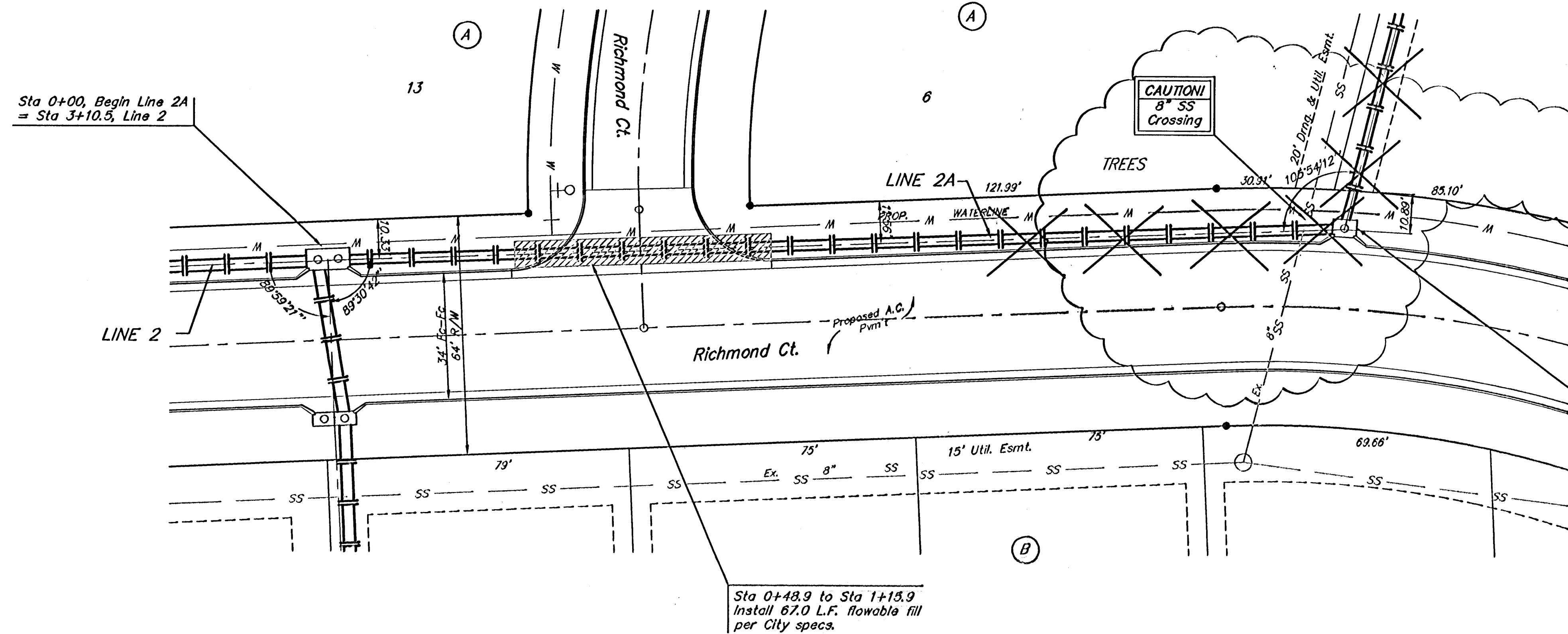


BENCHMARK:
 R.R. SPIKE IN HLP, 150' E. & 30'
 S. OF THE S.W. COR., S.E. 1/4,
 SEC. 12-26-1W.
 ELEV. = 1338.96 M.S.L.
 ELEV. = 151.36 City Datum

"O" IN OPEN, TOP FLANGE OF FIRE
 HYDRANT AT THE S.W. CORNER
 OF 61ST. ST. N. & MERIDIAN AVE.
 ELEV. = 1339.16 M.S.L.
 ELEV. = 151.76 City Datum

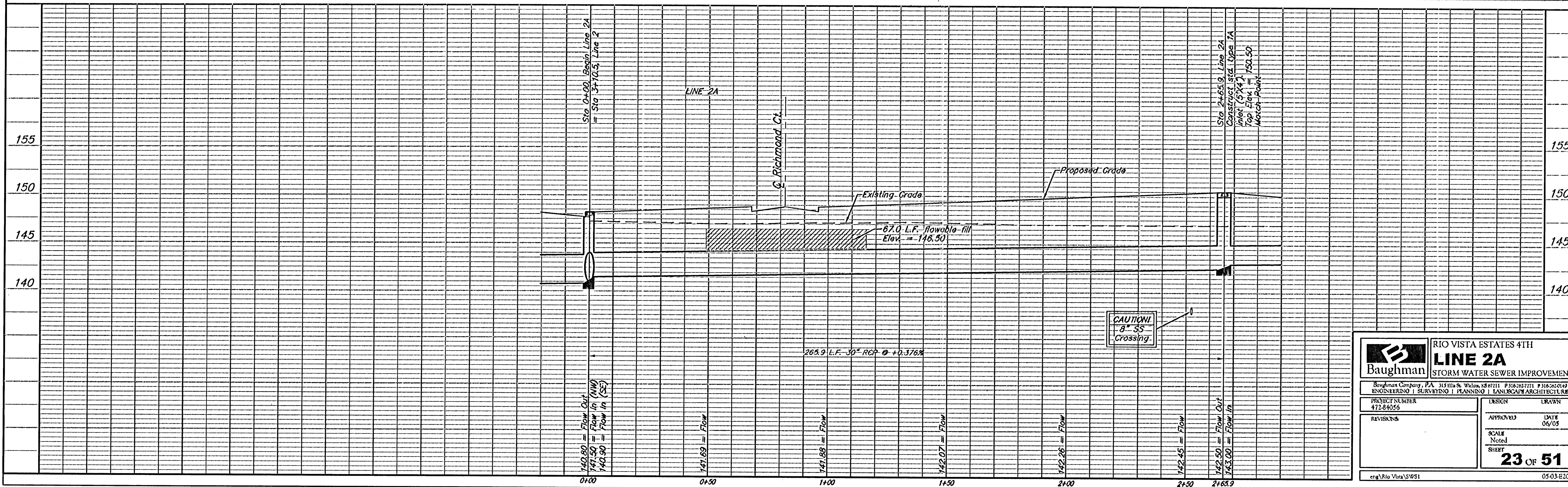
Scale: 1" = 20' Horizontal
 1" = 5' Vertical
 = Iron



Sta 2+65.9, Line 2A
 Construct std. type 1A
 inlet (5'x4').
 Top Elev. = 150.50
 Match Point

Sta 0+48.9 to Sta 1+15.9
 Install 67.0 L.F. flowable fill
 per City specs.

⊗ Denotes Trees to be
 Removed by the
 Storm Sewer Contractor



		RIO VISTA ESTATES 4TH	
		LINE 2A	
		STORM WATER SEWER IMPROVEMENT	
<small>Baughman Company, P.A. 315 8th & Wilson, St. Louis, MO 63111 P 316-262-7271 F 316-262-0149 ENGINEERING SURVEYING PLANNING LANDSCAPE ARCHITECTURE</small>			
PROJECT NUMBER 47284056	DESIGN	DRAWN	
REVISIONS	APPROVED	DATE	06/05
	SCALE	Noted	
	SHEET	23 OF 51	
eng\Rio Vista\SWSI		05-03-E204	