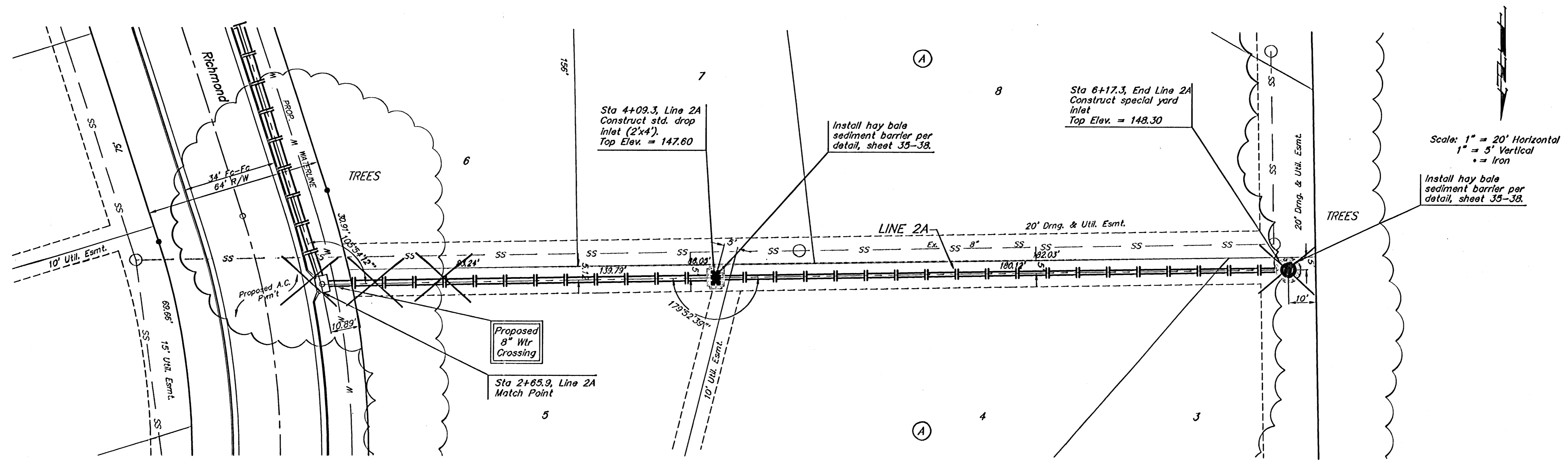
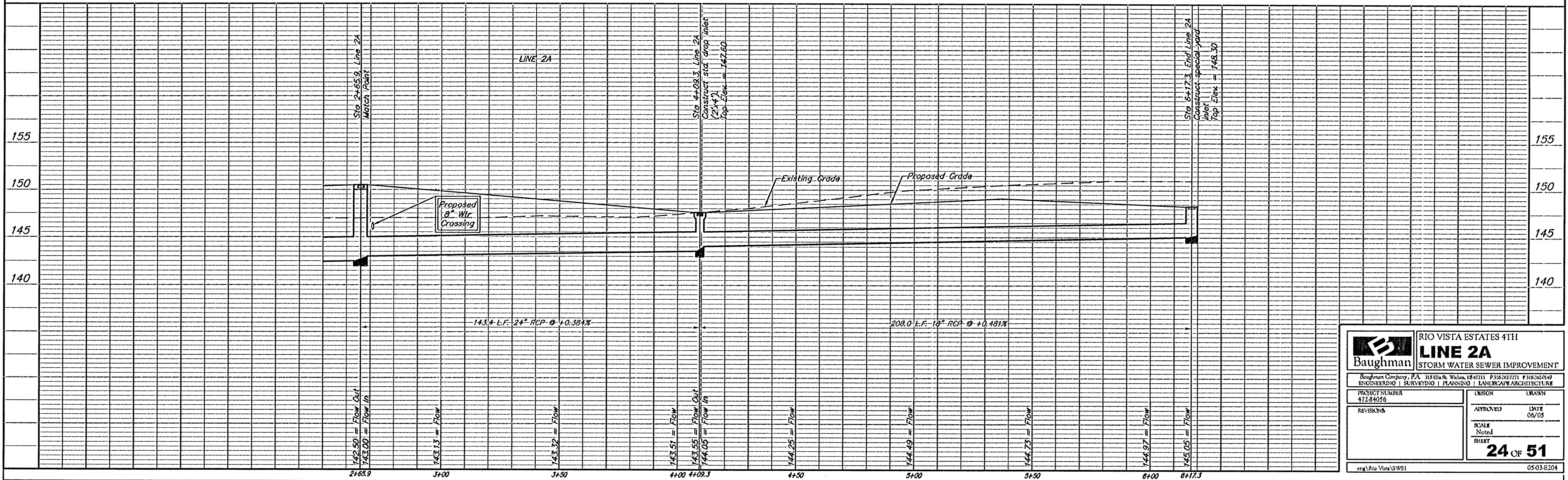


BENCHMARK:
 R.R. SPIKE IN HLP, 150' E. & 30'
 S. OF THE S.W. COR., S.E. 1/4,
 SEC. 12-26-1W.
 ELEV. = 1338.98 M.S.L.
 ELEV. = 151.56 City Datum

"0" IN OPEN, TOP FLANGE OF FIRE
 HYDRANT AT THE S.W. CORNER
 OF 61ST. ST. N. & MERIDIAN AVE.
 ELEV. = 1339.16 M.S.L.
 ELEV. = 151.76 City Datum



⊗ Denotes Trees to be
 Removed by the
 Storm Sewer Contractor



		RIO VISTA ESTATES 4TH LINE 2A STORM WATER SEWER IMPROVEMENT	
<small>Baughman Company, P.A. 315 Ellis St. Wichita, KS 67211 P 316-2627711 F 316-2620149 ENGINEERING SURVEYING PLANNING LANDSCAPE ARCHITECTURE</small>			
PROJECT NUMBER 472-84056	DESIGNER DRAWN	APPROVED DATE 06/05	SCALE Noted
REVISIONS	SHEET 24 OF 51	eng\Rio Vista\SW1 05-03-E204	