

Benchmarks:

City of Wichita Benchmark located 41.60' North and 69.00' East of the Centerlines of Hoover and MacArthur (39th St. South)

Elevation = 121.22 (City Datum)

City of Wichita Benchmark located at East end of Bridge over the Big Ditch on MacArthur in the West bound lane.

Elevation = 116.52 (City Datum)

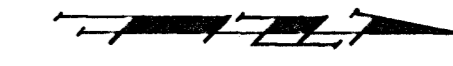
P.V.I.
Elev. = 104.20
No V.C.

Sta 1+39.04, Begin Const. of 5" A.C. Pmnt. W/5" Reinf. Rock Base and 4' Sidewalk

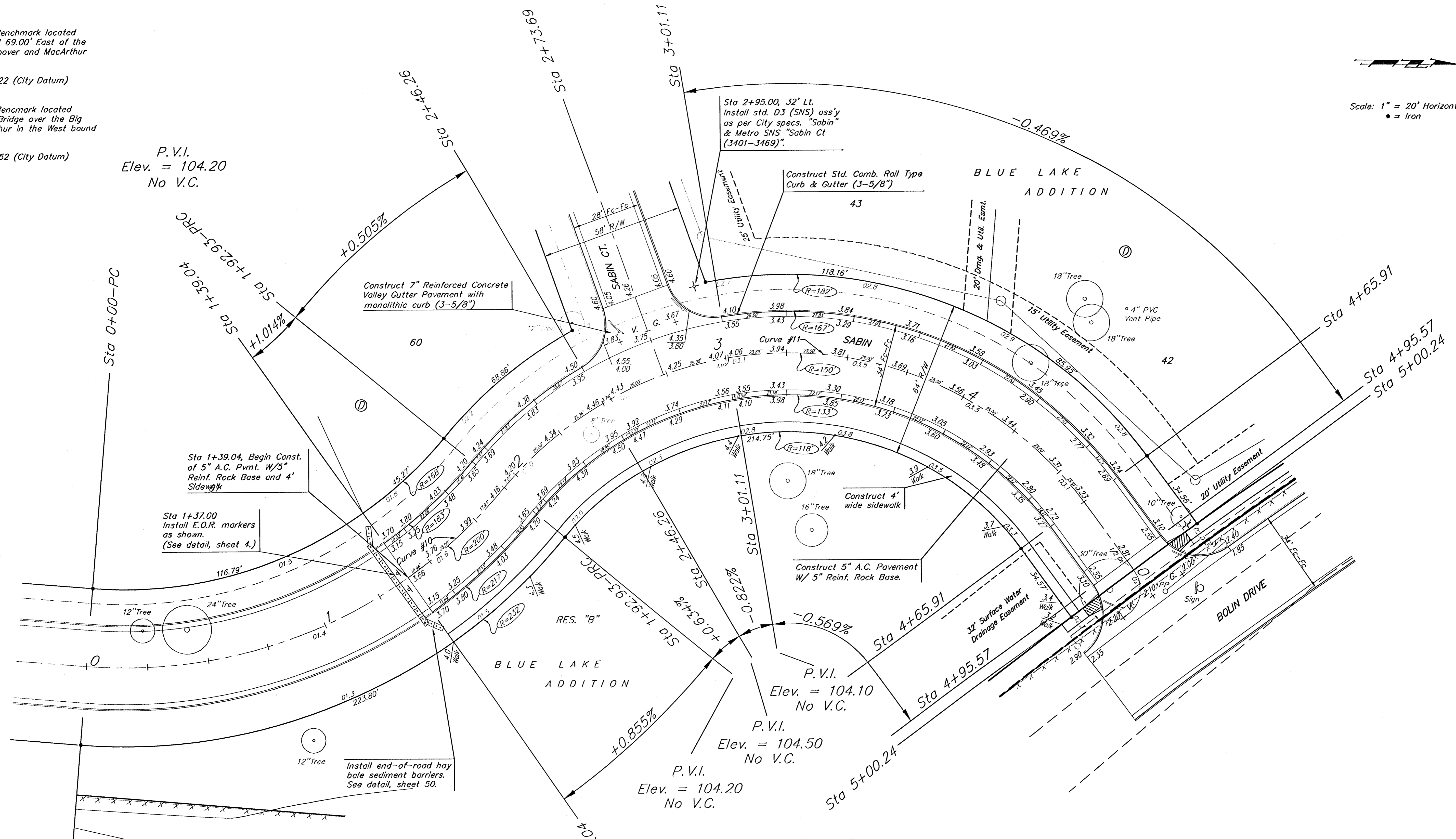
Sta 1+37.00 Install E.O.R. markers as shown. (See detail, sheet 4.)

Install end-of-road hay bale sediment barriers. See detail, sheet 50.

Note: Contractor shall Remove Trees only as Necessary to Construct Sanitary Sewer Line. Cost of Tree Removal shall be Included in Bid Item "Site Clearing and Restoration."



Scale: 1" = 20' Horizontal
• = Iron



NOTE: ROLL TYPE CURB & GUTTER TO BE CONSTRUCTED ON THE PAVEMENT SHOWN ON THIS SHEET. TOP OF CURB ELEVATIONS ARE GIVEN FOR FULL HEIGHT CURB.

	BLUE LAKE ADDITION - PHASE I	
	SABIN STREET IMPROVEMENTS	
<small>Baughman Company, P.A. 115 1/2th St. Wichita, KS 67211 F 3163437211 F 3162521049 ENGINEERING SURVEYING PLANNING LANDSCAPE ARCHITECTURE</small>		
PROJECT NUMBER 472-84074	DESIGN DMV	DRAWN DMV
REVISIONS:	APPROVED	DATE 2-2-05
SCALE NOTED		SHEET 17 OF 75
<small>bluelake.net</small>		