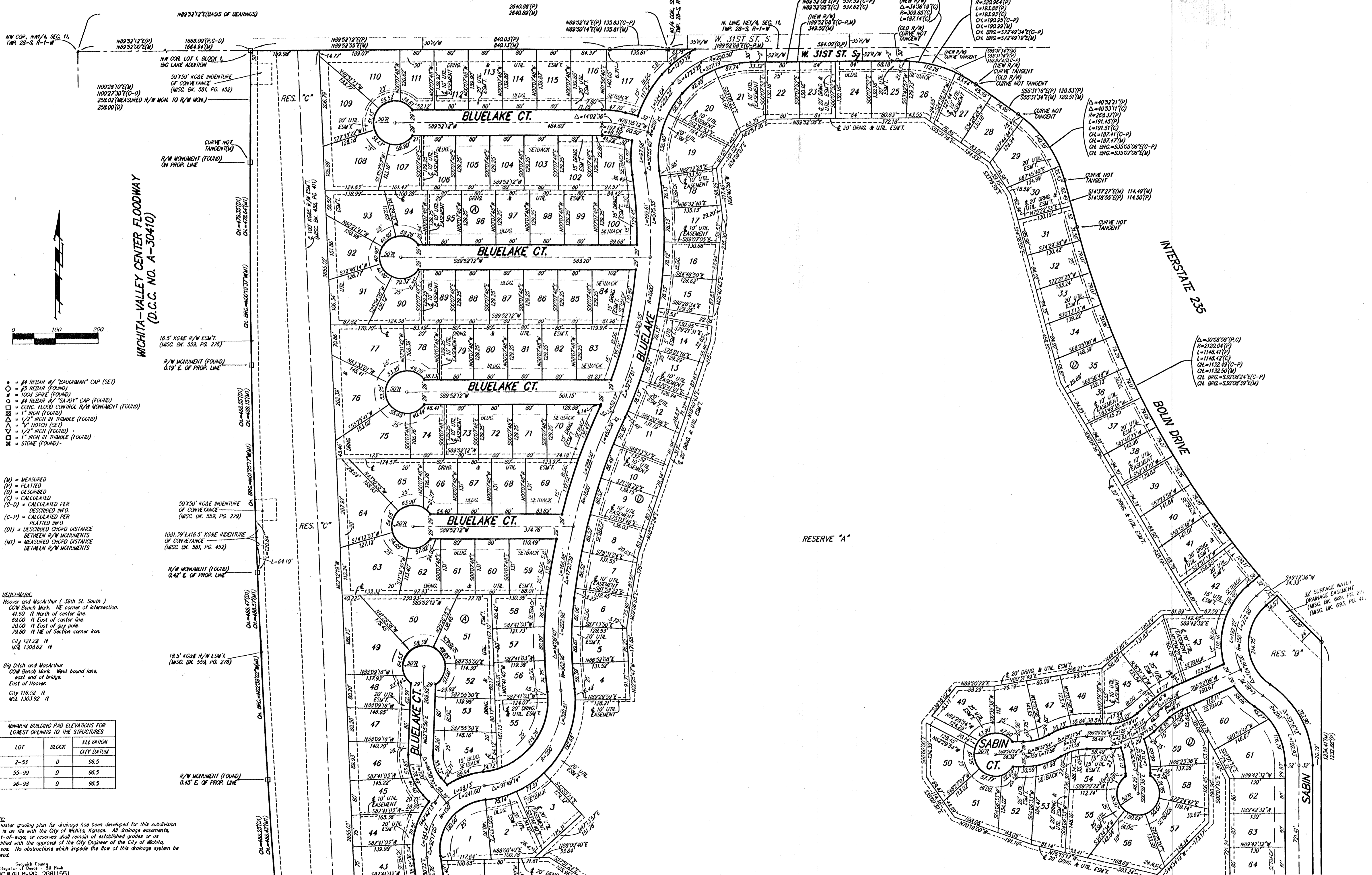


# BLUE LAKE ADDITION WICHITA, SEDGWICK COUNTY, KANSAS



- #4 REBAR W/ "BAUGHMAN" CAP (SET)
- #5 REBAR (FOUND)
- #6 REBAR (FOUND)
- #8 REBAR W/ "SAVY" CAP (FOUND)
- CONC. FLOOD CONTROL R/W MONUMENT (FOUND)
- 1" IRON (FOUND)
- 1/2" IRON IN THIMBLE (FOUND)
- 1/2" NOTCH (SET)
- 1/2" IRON (FOUND)
- 1" IRON IN THIMBLE (FOUND)
- STONE (FOUND)

- (M) = MEASURED
- (P) = PLATTED
- (D) = DESCRIBED
- (C) = CALCULATED
- (C-D) = CALCULATED PER DESCRIBED INFO
- (C-P) = CALCULATED PER PLATTED INFO
- (DI) = DESCRIBED CHORD DISTANCE BETWEEN R/W MONUMENTS
- (M) = MEASURED CHORD DISTANCE BETWEEN R/W MONUMENTS

**BENCHMARKS:**  
 Hoover and MacArthur (.39th St. South)  
 COW Bench Mark, NE corner of intersection.  
 41.60 ft North of center line.  
 63.00 ft East of center line.  
 20.00 ft East of guy pole.  
 78.80 ft NE of Section corner iron.  
 City 121.22 ft  
 NSL 1308.62 ft

**Big Ditch and MacArthur**  
 COW Bench Mark, West bound lane east end of bridge.  
 East of Hoover.  
 City 116.52 ft  
 NSL 1303.92 ft

MINIMUM BUILDING PAD ELEVATIONS FOR LOWEST OPENING TO THE STRUCTURES		
LOT	BLOCK	ELEVATION CITY DATUM
2-53	D	96.5
55-90	D	96.5
96-98	D	96.5

**NOTE:**  
 A master grading plan for drainage has been developed for this subdivision and is on file with the City of Wichita, Kansas. All drainage easements, right-of-way, or reserve shall remain at established grades or be modified with the approval of the City Engineer of the City of Wichita, Kansas. No obstructions which impede the flow of this drainage system be allowed.