

FONTANA

AN ADDITION TO WICHITA,
SEDGWICK COUNTY, KANSAS
FOUR CORNER PLAN

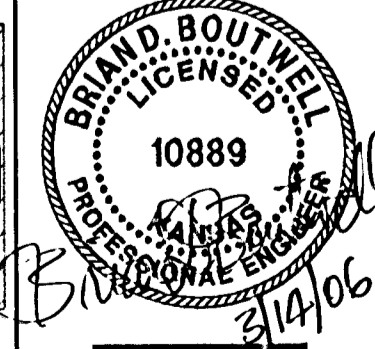
SCALE: 1"=100'

FONTANA	
MINIMUM OPENINGS	ELEVATION (N.G.V.D.)
BLOCK 1	174.4
LOTS 31, 47-68	
BLOCK 3	171.7
LOTS 15-41, 55	
BLOCK 4	171.3
LOTS 22-25	
FONTANA 2nd	
MINIMUM OPENINGS	ELEVATION (N.G.V.D.)
BLOCK 1	173.8
LOTS 7-8	
LOTS 10-11	171.3
LOTS 12-21	171.5
LOTS 32-36	171.7
BLOCK 2	171.7
LOTS 1-8	

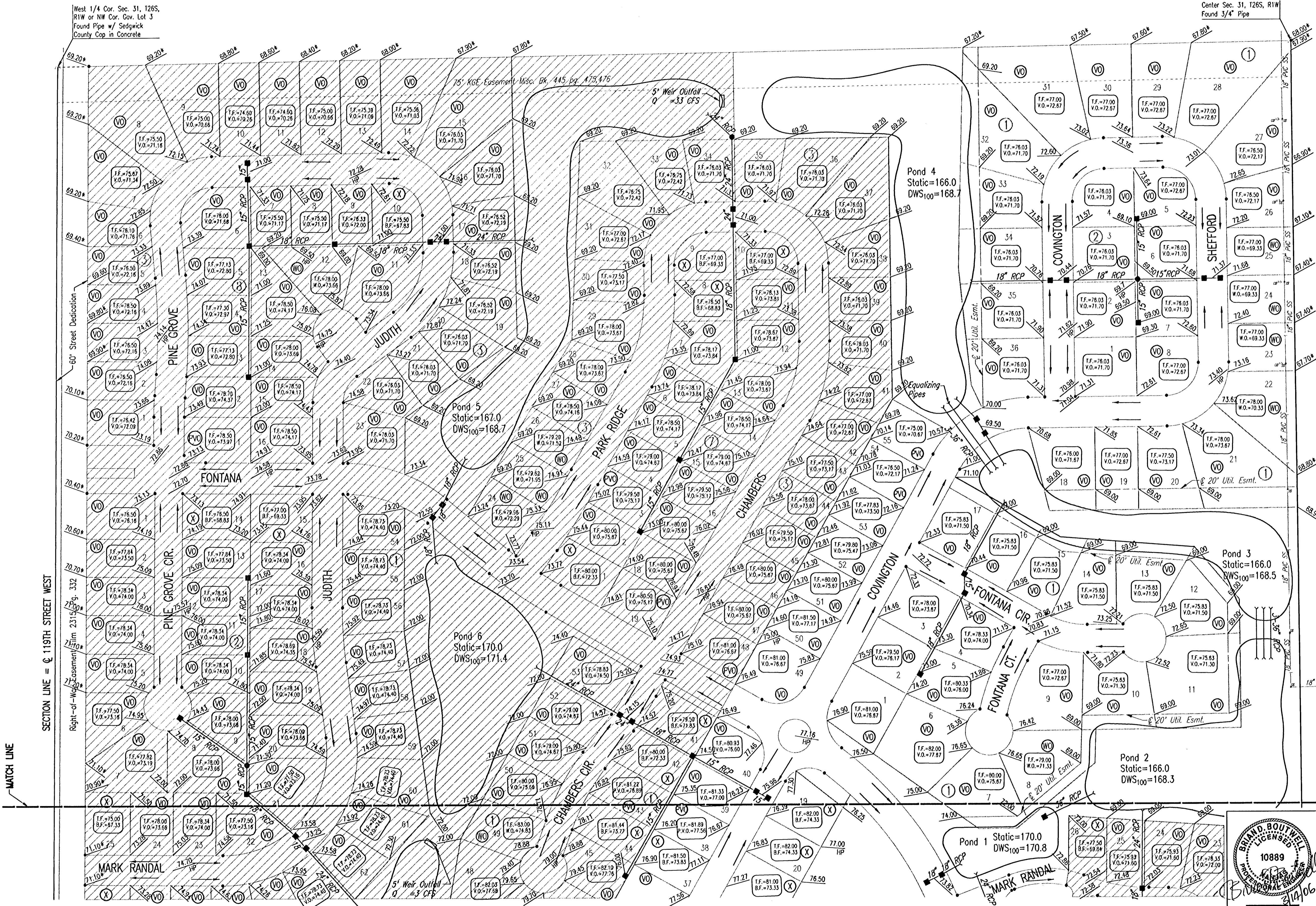
LEGEND

- SPOT ELEVATION
- HIGH POINT ELEVATION
- MATCH EXISTING ELEVATION
- STORM SEWER AND INLET
- STORM SEWER AND MANHOLE
- VIEW-OUT BASEMENT
- WALK-OUT BASEMENT
- STANDARD BASEMENT
- POSSIBLE WALK-OUT BASEMENT
- POSSIBLE VIEW-OUT

ADD 100 TO ELEVATIONS FOR CITY DATUM.
REVISED 02-08-06
REVISED 11-01-05



Revision	By	Date
FONTANA ADDITION-PHASE 1		
4-CORNER GRADING PLAN		
(FOR INFORMATION ONLY)		
JAMES L. ARMOUR, P.E. - CITY ENGINEER		
CITY OF WICHITA PROJECT NO. 472-84086		
Professional Engineering Consultants, P.A.		
303 S. TOPEKA • WICHITA, KANSAS 67202		
316-262-2691 • FAX 316-262-3003		
Designed by	BDR, BLB	Job No. 35-04485-000
Drawn by	BJS	Date September 2004
Sheet 6 of 101		



Sheet 03-14-2006 11:17:10 AM by BJS
 Plot Scale: 1/4"=100'-11-2006 11:17:44 AM by BJS
 CT:2004.04485.000.4CORNER.1.rev